



NATIONAL POWER CORPORATION

MinGen

PHILIPPINE BIDDING DOCUMENTS

(Procurement of INFRASTRUCTURE PROJECTS)

FOR

**A6 CONSTRUCTION OF 4 UNITS GUARD
TOWERS W/ CCTV & SECURITY
EQUIPMENT AT AGUS 6 SURGE TANK &
DAM**

P.R. No.: MG-A7M22-080

**Contracts Management Office
Logistics Division**

**Sixth Edition
July 2020
Rev. 2**

TABLE OF CONTENTS

| | |
|---|-----------|
| GLOSSARY OF..... | 4 |
| TERMS, ABBREVIATIONS, AND ACRONYMS..... | 4 |
| SECTION I. INVITATION TO BID..... | 7 |
| SECTION II. INSTRUCTIONS TO BIDDERS..... | 11 |
| 1. Scope of Bid..... | 12 |
| 2. Funding Information..... | 12 |
| 3. Bidding Requirements..... | 12 |
| 4. Corrupt, Fraudulent, Collusive, Coercive, and Obstructive Practices..... | 13 |
| 5. Eligible Bidders..... | 13 |
| 6. Origin of Associated Goods..... | 13 |
| 7. Subcontracts..... | 13 |
| 8. Pre-Bid Conference..... | 14 |
| 9. Clarification and Amendment of Bidding Documents..... | 14 |
| 10. Documents Comprising the Bid: Eligibility and Technical Components..... | 14 |
| 11. Documents Comprising the Bid: Financial Component..... | 15 |
| 12. Alternative Bids..... | 15 |
| 13. Bid Prices..... | 15 |
| 14. Bid and Payment Currencies..... | 15 |
| 15. Bid Security..... | 15 |
| 16. Sealing and Marking of Bids..... | 16 |
| 17. Deadline for Submission of Bids..... | 16 |
| 18. Opening and Preliminary Examination of Bids..... | 16 |
| 19. Detailed Evaluation and Comparison of Bids..... | 16 |
| 20. Post Qualification..... | 17 |
| 21. Signing of the Contract..... | 17 |
| SECTION III. BID DATA SHEET..... | 18 |
| SECTION IV. GENERAL CONDITIONS OF CONTRACT..... | 23 |
| 1. Scope of Contract..... | 24 |
| 2. Sectional Completion of Works..... | 24 |
| 3. Possession of Site..... | 24 |
| 4. The Contractor's Obligations..... | 24 |
| 5. Performance Security..... | 25 |

| | | |
|---|---|------------|
| 6. | Site Investigation Reports | 25 |
| 7. | Warranty | 25 |
| 8. | Liability of the Contractor | 25 |
| 9. | Termination for Other Causes..... | 26 |
| 10. | Dayworks | 26 |
| 11. | Program of Work | 26 |
| 12. | Instructions, Inspections and Audits..... | 26 |
| 13. | Advance Payment | 26 |
| 14. | Progress Payments | 27 |
| 15. | Operating and Maintenance Manuals | 27 |
| SECTION V. SPECIAL CONDITIONS OF CONTRACT | | 28 |
| SECTION VI. SPECIFICATIONS..... | | 30 |
| SECTION VII. DRAWINGS..... | | 59 |
| SECTION VIII. BILL OF QUANTITIES..... | | 60 |
| SECTION IX. CHECKLIST OF TECHNICAL AND FINANCIAL DOCUMENTS | | 82 |
| FORM OF BID SECURITY (SURETY BOND)..... | | 89 |
| CONTRACTOR'S ORGANIZATIONAL CHART FOR THE CONTRACT | | 93 |
| JOINT VENTURE AGREEMENT | | 114 |
| BID FORM | | 117 |
| SUMMARY SHEETS OF MATERIALS PRICES, LABOR RATES AND EQUIPMENT RENTAL RATES | | 120 |

Glossary of Terms, Abbreviations, and Acronyms

ABC – Approved Budget for the Contract.

ARCC – Allowable Range of Contract Cost.

BAC – Bids and Awards Committee.

Bid – A signed offer or proposal to undertake a contract submitted by a bidder in response to and in consonance with the requirements of the bidding documents. Also referred to as *Proposal* and *Tender*. (2016 revised IRR, Section 5[c])

Bidder – Refers to a contractor, manufacturer, supplier, distributor and/or consultant who submits a bid in response to the requirements of the Bidding Documents. (2016 revised IRR, Section 5[d])

Bidding Documents – The documents issued by the Procuring Entity as the bases for bids, furnishing all information necessary for a prospective bidder to prepare a bid for the Goods, Infrastructure Projects, and/or Consulting Services required by the Procuring Entity. (2016 revised IRR, Section 5[e])

BIR – Bureau of Internal Revenue.

BSP – Bangko Sentral ng Pilipinas.

CDA – Cooperative Development Authority.

Consulting Services – Refer to services for Infrastructure Projects and other types of projects or activities of the GOP requiring adequate external technical and professional expertise that are beyond the capability and/or capacity of the GOP to undertake such as, but not limited to: (i) advisory and review services; (ii) pre-investment or feasibility studies; (iii) design; (iv) construction supervision; (v) management and related services; and (vi) other technical services or special studies. (2016 revised IRR, Section 5[i])

Contract – Refers to the agreement entered into between the Procuring Entity and the Supplier or Manufacturer or Distributor or Service Provider for procurement of Goods and Services; Contractor for Procurement of Infrastructure Projects; or Consultant or Consulting Firm for Procurement of Consulting Services; as the case may be, as recorded in the Contract Form signed by the parties, including all attachments and appendices thereto and all documents incorporated by reference therein.

Contractor – is a natural or juridical entity whose proposal was accepted by the Procuring Entity and to whom the Contract to execute the Work was awarded. Contractor as used in these Bidding Documents may likewise refer to a supplier, distributor, manufacturer, or consultant.

CPI – Consumer Price Index.

DOLE – Department of Labor and Employment.

DTI – Department of Trade and Industry.

Foreign-funded Procurement or Foreign-Assisted Project –Refers to procurement whose funding source is from a foreign government, foreign or international financing institution as specified in the Treaty or International or Executive Agreement. (2016 revised IRR, Section 5[b]).

GFI – Government Financial Institution.

GOCC –Government-owned and/or –controlled corporation.

Goods – Refer to all items, supplies, materials and general support services, except Consulting Services and Infrastructure Projects, which may be needed in the transaction of public businesses or in the pursuit of any government undertaking, project or activity, whether in the nature of equipment, furniture, stationery, materials for construction, or personal property of any kind, including non-personal or contractual services such as the repair and maintenance of equipment and furniture, as well as trucking, hauling, janitorial, security, and related or analogous services, as well as procurement of materials and supplies provided by the Procuring Entity for such services. The term “related” or “analogous services” shall include, but is not limited to, lease or purchase of office space, media advertisements, health maintenance services, and other services essential to the operation of the Procuring Entity. (2016 revised IRR, Section 5[r])

GOP – Government of the Philippines.

Infrastructure Projects – Include the construction, improvement, rehabilitation, demolition, repair, restoration or maintenance of roads and bridges, railways, airports, seaports, communication facilities, civil works components of information technology projects, irrigation, flood control and drainage, water supply, sanitation, sewerage and solid waste management systems, shore protection, energy/power and electrification facilities, national buildings, school buildings, hospital buildings, and other related construction projects of the government. Also referred to as *civil works or works*. (2016 revised IRR, Section 5[u])

LGUs – Local Government Units.

NFCC – Net Financial Contracting Capacity.

NGA – National Government Agency.

PCAB – Philippine Contractors Accreditation Board.

PhilGEPS - Philippine Government Electronic Procurement System.

Procurement Project – refers to a specific or identified procurement covering goods, infrastructure project or consulting services. A Procurement Project shall be described, detailed, and scheduled in the Project Procurement Management Plan prepared by the agency which shall be consolidated in the procuring entity's Annual Procurement Plan. (GPPB Circular No. 06-2019 dated 17 July 2019)

PSA – Philippine Statistics Authority.

SEC – Securities and Exchange Commission.

SLCC – Single Largest Completed Contract.

UN – United Nations.

Section I. Invitation to Bid



NATIONAL POWER CORPORATION

MinGen

Invitation to Bid for Construction of 4 Units Guard Towers w/ CCTV & Security Equipment @ Agus 6 Surge Tank & Dam

The *NATIONAL POWER CORPORATION-MINDANAO GENERATION*, through the approved Corporate Budget of NPC for CY 2022 intends to apply the sum of *Two Million Nine Hundred Ninety-nine Thousand Nine Hundred Ninety-seven Pesos and 24/100 (PHP 2,999,997.24)* being the Approved Budget for the Contract (ABC) to payments under the contract for *Construction of 4 Units Guard Towers w/ CCTV & Security Equipment @ A6 Surge Tank & Dam, Fuentes, Brgy. Maria Cristina, Iligan City (INFRA2022-AG7-024)*. Bids received in excess of the ABC shall be automatically rejected at bid opening.

1. The *NATIONAL POWER CORPORATION-MINDANAO GENERATION* now invites bids for the above Procurement Project. Completion of the Works is required *Eighty (80) calendar days*. Bidders should have completed a contract similar to the Project. The description of an eligible bidder is contained in the Bidding Documents, particularly, in Section II (Instructions to Bidders).
2. Bidding will be conducted through open competitive bidding procedures using non-discretionary "pass/fail" criterion as specified in the 2016 revised Implementing Rules and Regulations (IRR) of Republic Act (RA) No. 9184.
3. Interested bidders may obtain further information from *BAC Secretariat, NATIONAL POWER CORPORATION-MINDANAO GENERATION* and inspect the Bidding Documents at the address given below from *8:00 AM – 5:00 PM Monday to Friday*.
4. A complete set of Bidding Documents may be acquired by interested Bidders on August 3 - 23, 2022 from the given address and website(s) below and upon payment of the applicable fee for the Bidding Documents, pursuant to the latest Guidelines issued by the GPPB, in the amount of Three Thousand Pesos (PHP 3,000.00). The Procuring Entity shall allow the bidder to pay online and present its proof of payment for the fees in person, by facsimile, or through electronic means. For those prospective bidders who wish to pay online, below are the details of the account:

LandbankAccount name : NPC GENCO 5 COLLECTIONS FUND

LandbankAccount number : 0321-1689-14

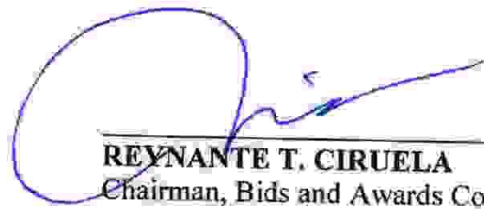
It may also be downloaded free of charge from the website of the Philippine Government Electronic Procurement System (PhilGEPS) provided that Bidders shall pay the applicable fee for the Bidding Documents not later than the submission of their bids.

5. The *NATIONAL POWER CORPORATION-MINDANAO GENERATION* will hold a Pre-Bid Conference on *August 11, 2022 at 9:00 AM* at *Bidding Room, NPC-Mindanao Generation Headquarters, Maria Cristina, Iligan City* and/or through videoconferencing/webcasting via *ZOOM*, which shall be open to prospective bidders. Interested online attendees are required to pre-register one (1) day before the scheduled pre-bidding conference. For pre-registration, contact tel. no. (063)-222-3459 or email *logistics_afd_mingen@napocor.gov.ph*.
6. Bids must be duly received by the BAC Secretariat through manual submission at the office address as indicated below, on or before *August 23, 2022 at 9:30 AM*. Late bids shall not be accepted.
7. All bids must be accompanied by a bid security in any of the acceptable forms and in the amount stated in **ITB Clause 15**.
8. Bid opening shall be on *August 23, 2022 at 9:30 AM* at the *Bidding Room, NPC-Mindanao Generation Headquarters, Maria Cristina, Iligan City*. Bids will be opened in the presence of the bidders' representatives who choose to attend the activity.
9. *This project requires submission of at least:*
 - *Certificate of Site Inspection*
10. The *NATIONAL POWER CORPORATION- MINDANAO GENERATION* reserves the right to reject any and all bids, declare a failure of bidding, or not award the contract at any time prior to contract award in accordance with Sections 35.6 and 41 of the 2016 revised Implementing Rules and Regulations (IRR) of RA No. 9184, without thereby incurring any liability to the affected bidder or bidders.
11. For further information, please refer to:

BAC Secretariat
Contracts Management Office
Logistics Division
Mindanao Generation Headquarters
National Power Corporation
Maria Cristina, Iligan City
logistics_afd_mingen@napocor.gov.ph
Tel. No.: (063)222-3459
Fax No.: (063)223-8355/(063)223-4604
www.napocor.gov.ph

12. You may visit the following websites:

For downloading of Bidding Documents: <https://www.philgeps.gov.ph/> or
<https://www.napocor.gov.ph/BCSD/bids.php>


REYNANTE T. CIRUELA
Chairman, Bids and Awards Committee
Mindanao Generation Headquarters

Date of PhilGEPS Publication: 03 August 2022

**LIST OF PRIVATE SURETY COMPANIES ACCEPTABLE TO NPC
AS OF 11 NOVEMBER 2018**

| | Name of Surety Company | Contact No. |
|----|---|--|
| 1 | ALPHA INSURANCE & SURETY CO., INC. Alpha Insurance Centre 1025 San Marcelino St., Ermita, Manila | 525-1301 F - 522-6131 |
| 2 | COMMONWEALTH INSURANCE COMPANY 10/12F, BDO Plaza, 8737 Paseo de Roxas Makati City | 818-7626 loc 1253 813-2685 |
| 3 | COUNTRY BANKERS INSURANCE CORPORATION Country Bankers Centre, 648 T. M. Kalaw Avenue Ermita, Manila | 524-0621 to 23 |
| 4 | INTRA STRATA ASSURANCE CORP. 8th Floor, 88 Corporate Center Building Sedeño cor. Valero St., Salcedo Vill, Makati City | 817-3031 to 34 |
| 5 | LIBERTY INSURANCE CORPORATION JCS Building, 119 Dela Rosa cor. Carlos Palanca Sts. Legaspi Village, Makati City | 819-1961 to 66 |
| 6 | PACIFIC UNION INSURANCE COMPANY Unit 2401 Antel Corporate Center 121 Valero St. Salcedo Village, Makati City | 845-1033 to 37 |
| 7 | PRUDENTIAL GUARANTEE & ASSURANCE, INC. Coyuito House, 119 Palanca St. Legaspi Village, Makati City | 810-4916 to 35 |
| 8 | STERLING INSURANCE COMPANY, INC. 6F Zeta Annex II Building 191 Salcedo St., Legaspi Village, Makati City | 759-3082/759-2930/ 759-2921/ 892-3792 |
| 9 | THE MERCANTILE INSURANCE CO. LTD. Mercantile Insurance Building Corner General Luna & Beaterio Sts. Intramuros, Manila | 527-7701 to 20 |
| 10 | TRAVELLERS INSURANCE SURETY CORPORATION 10 th Floor, G. E. Antonio Building T.M. Kalaw corner J. Bocobo St., Ermita, Manila | 521-3822/400-9327 |
| 11 | WESTERN GUARANTEE CORPORATION Suite 508 BPI Office Condominium Plaza Cervantes, Binondo, Manila | 241-7401/242-1073 |

Note: Indicate in the performance, advance payment, retention and guarantees bond the following NPC Standard Terms & Conditions:

- 1) The bond is a penal bond, callable on demand and the entire amount thereof shall be forfeited in favor of the Obligor upon default of the Principal without the need to prove or to show grounds or reasons for demand for the sum specified therein;
- 2) The amount claimed by the Obligor under this bond shall be paid in full and shall never be subject to any adjustment by the Surety;
- 3) In case of claim, the Surety shall pay such claim within sixty (60) days from receipt by the Surety of the Obligor's notice of claim/demand letter notwithstanding any objection thereto by the Principal.

4) The proposed bond is valid until the issuance of NPC of the Cert. of Final Acceptance.

Section II. Instructions to Bidders

1. Scope of Bid

The Procuring Entity, **NATIONAL POWER CORPORATION-MINDANAO GENERATION** invites Bids for the **CONSTRUCTION OF (4) UNITS GUARD TOWERS W/ CCTV & SECURITY EQUIPMENT @ AGUS-6 SURGE TANK & DAM, FUENTES, BRGY. MARIA CRISTINA, ILIGAN CITY, with Project Identification Number INFRA2022-AG7-024.**

The Procurement Project (referred to herein as "Project") is for the construction of Works, as described in Section VI (Specifications).

2. Funding Information

- 2.1. The GOP through the source of funding as indicated below for CY 2022 in the amount of **Three Million Pesos (PHP3,000,000.00)**
- 2.2. The source of funding is:
 - a. GOCC and GFIs, the proposed Corporate Operating Budget.

3. Bidding Requirements

The Bidding for the Project shall be governed by all the provisions of RA No. 9184 and its 2016 revised IRR, including its Generic Procurement Manual and associated policies, rules and regulations as the primary source thereof, while the herein clauses shall serve as the secondary source thereof.

Any amendments made to the IRR and other GPPB issuances shall be applicable only to the ongoing posting, advertisement, or invitation to bid by the BAC through the issuance of a supplemental or bid bulletin.

The Bidder, by the act of submitting its Bid, shall be deemed to have inspected the site, determined the general characteristics of the contracted Works and the conditions for this Project, such as the location and the nature of the work; (b) climatic conditions; (c) transportation facilities; (c) nature and condition of the terrain, geological conditions at the site communication facilities, requirements, location and availability of construction aggregates and other materials, labor, water, electric power and access roads; and (d) other factors that may affect the cost, duration and execution or implementation of the contract, project, or work and examine all instructions, forms, terms, and project requirements in the Bidding Documents.

4. Corrupt, Fraudulent, Collusive, Coercive, and Obstructive Practices

The Procuring Entity, as well as the Bidders and Contractors, shall observe the highest standard of ethics during the procurement and execution of the contract. They or through an agent shall not engage in corrupt, fraudulent, collusive, coercive, and obstructive practices defined under Annex "I" of the 2016 revised IRR of RA No. 9184 or other integrity violations in competing for the Project.

5. Eligible Bidders

- 5.1. Only Bids of Bidders found to be legally, technically, and financially capable will be evaluated.
- 5.2. The Bidder must have an experience of having completed a Single Largest Completed Contract (SLCC) that is similar to this Project, equivalent to at least fifty percent (50%) of the ABC adjusted, if necessary, by the Bidder to current prices using the PSA's CPI, except under conditions provided for in Section 23.4.2.4 of the 2016 revised IRR of RA No. 9184.

A contract is considered to be "similar" to the contract to be bid if it has the major categories of work stated in the **BDS**.

- 5.3. For Foreign-funded Procurement, the Procuring Entity and the foreign government/foreign or international financing institution may agree on another track record requirement, as specified in the Bidding Document prepared for this purpose.
- 5.4. The Bidders shall comply with the eligibility criteria under Section 23.4.2 of the 2016 IRR of RA No. 9184.

6. Origin of Associated Goods

There is no restriction on the origin of Goods other than those prohibited by a decision of the UN Security Council taken under Chapter VII of the Charter of the UN.

7. Subcontracts

- 7.1. The Bidder may subcontract portions of the Project to the extent allowed by the Procuring Entity as stated herein, but in no case more than fifty percent (50%) of the Project.

The Procuring Entity has prescribed that:

- a. Subcontracting is not allowed.

8. Pre-Bid Conference

The Procuring Entity will hold a pre-bid conference for this Project on the specified date and time and either at its physical address **and/or through videoconferencing/webcasting** as indicated in paragraph 6 of the IB.

9. Clarification and Amendment of Bidding Documents

Prospective bidders may request for clarification on and/or interpretation of any part of the Bidding Documents. Such requests must be in writing and received by the Procuring Entity, either at its given address or through electronic mail indicated in the IB, at least ten (10) calendar days before the deadline set for the submission and receipt of Bids.

10. Documents Comprising the Bid: Eligibility and Technical Components

- 10.1. The first envelope shall contain the eligibility and technical documents of the Bid as specified in **Section IX. Checklist of Technical and Financial Documents**.
- 10.2. If the eligibility requirements or statements, the bids, and all other documents for submission to the BAC are in foreign language other than English, it must be accompanied by a translation in English, which shall be authenticated by the appropriate Philippine foreign service establishment, post, or the equivalent office having jurisdiction over the foreign bidder's affairs in the Philippines. For Contracting Parties to the Apostille Convention, only the translated documents shall be authenticated through an apostille pursuant to GPPB Resolution No. 13-2019 dated 23 May 2019. The English translation shall govern, for purposes of interpretation of the bid.
- 10.3. A valid PCAB License is required, and in case of joint ventures, a valid special PCAB License, and registration for the type and cost of the contract for this Project. Any additional type of Contractor license or permit shall be indicated in the **BDS**.
- 10.4. A List of Contractor's key personnel (e.g., Project Manager, Project Engineers, Materials Engineers, and Foremen) assigned to the contract to be bid, with their complete qualification and experience data shall be provided. These key personnel must meet the required minimum years of experience set in the **BDS**.
- 10.5. A List of Contractor's major equipment units, which are owned, leased, and/or under purchase agreements, supported by proof of ownership, certification of availability of equipment from the equipment lessor/vendor for the duration of the project, as the case may be, must meet the minimum requirements for the contract set in the **BDS**.

11. Documents Comprising the Bid: Financial Component

- 11.1. The second bid envelope shall contain the financial documents for the Bid as specified in **Section IX. Checklist of Technical and Financial Documents**.
- 11.2. Any bid exceeding the ABC indicated in paragraph 1 of the **IB** shall not be accepted.
- 11.3. For Foreign-funded procurement, a ceiling may be applied to bid prices provided the conditions are met under Section 31.2 of the 2016 revised IRR of RA No. 9184.

12. Alternative Bids

Bidders shall submit offers that comply with the requirements of the Bidding Documents, including the basic technical design as indicated in the drawings and specifications. Unless there is a value engineering clause in the **BDS**, alternative Bids shall not be accepted.

13. Bid Prices

All bid prices for the given scope of work in the Project as awarded shall be considered as fixed prices, and therefore not subject to price escalation during contract implementation, except under extraordinary circumstances as determined by the NEDA and approved by the GPPB pursuant to the revised Guidelines for Contract Price Escalation guidelines.

14. Bid and Payment Currencies

- 14.1. Bid prices may be quoted in the local currency or tradeable currency accepted by the BSP at the discretion of the Bidder. However, for purposes of bid evaluation, Bids denominated in foreign currencies shall be converted to Philippine currency based on the exchange rate as published in the BSP reference rate bulletin on the day of the bid opening.
- 14.2. *Payment of the contract price shall be made in:*
 - a. Philippine Pesos.

15. Bid Security

- 15.1. The Bidder shall submit a Bid Securing Declaration or any form of Bid Security in the amount indicated in the **BDS**, which shall be not less than the percentage of the ABC in accordance with the schedule in the **BDS**.

- 15.2. The Bid and bid security shall be valid until *One Hundred Twenty (120) Calendar Days from the Scheduled Bid Opening*. Any bid not accompanied by an acceptable bid security shall be rejected by the Procuring Entity as non-responsive.

16. Sealing and Marking of Bids

Each Bidder shall submit one copy of the first and second components of its Bid.

The Procuring Entity may request additional hard copies and/or electronic copies of the Bid. However, failure of the Bidders to comply with the said request shall not be a ground for disqualification.

If the Procuring Entity allows the submission of bids through online submission to the given website or any other electronic means, the Bidder shall submit an electronic copy of its Bid, which must be digitally signed. An electronic copy that cannot be opened or is corrupted shall be considered non-responsive and, thus, automatically disqualified.

17. Deadline for Submission of Bids

The Bidders shall submit on the specified date and time and either at its physical address or through online submission as indicated in paragraph 7 of the **IB**.

18. Opening and Preliminary Examination of Bids

- 18.1. The BAC shall open the Bids in public at the time, on the date, and at the place specified in paragraph 9 of the **IB**. The Bidders' representatives who are present shall sign a register evidencing their attendance. In case videoconferencing, webcasting or other similar technologies will be used, attendance of participants shall likewise be recorded by the BAC Secretariat.

In case the Bids cannot be opened as scheduled due to justifiable reasons, the rescheduling requirements under Section 29 of the 2016 revised IRR of RA No. 9184 shall prevail.

- 18.2. The preliminary examination of Bids shall be governed by Section 30 of the 2016 revised IRR of RA No. 9184.

19. Detailed Evaluation and Comparison of Bids

- 19.1. The Procuring Entity's BAC shall immediately conduct a detailed evaluation of all Bids rated "*passed*" using non-discretionary pass/fail criteria. The BAC shall consider the conditions in the evaluation of Bids under Section 32.2 of 2016 revised IRR of RA No. 9184.
- 19.2. If the Project allows partial bids, all Bids and combinations of Bids as indicated in the **BDS** shall be received by the same deadline and opened and

SECTION II- INSTRUCTIONS TO BIDDERS

evaluated simultaneously so as to determine the Bid or combination of Bids offering the lowest calculated cost to the Procuring Entity. Bid Security as required by ITB Clause 16 shall be submitted for each contract (lot) separately.

- 19.3. In all cases, the NFCC computation pursuant to Section 23.4.2.6 of the 2016 revised IRR of RA No. 9184 must be sufficient for the total of the ABCs for all the lots participated in by the prospective Bidder.

20. Post Qualification

Within a non-extendible period of five (5) calendar days from receipt by the Bidder of the notice from the BAC that it submitted the Lowest Calculated Bid, the Bidder shall submit its latest income and business tax returns filed and paid through the BIR Electronic Filing and Payment System (eFPS), and other appropriate licenses and permits required by law and stated in the BDS.

21. Signing of the Contract

The documents required in Section 37.2 of the 2016 revised IRR of RA No. 9184 shall form part of the Contract. Additional Contract documents are indicated in the BDS.

Section III. Bid Data Sheet

Bid Data Sheet

| ITB Clause | | | |
|------------|--|---------------------------------------|--|
| 5.2 | For this purpose, contracts similar to the Project refer to contracts which have the same major categories of work, which shall be: <u>Construction of Vertical Structure</u> | | |
| 7.1 | Subcontracting is not allowed. | | |
| 10.3 | None | | |
| 10.4 | The key personnel must meet the required minimum years of experience set below: | | |
| | <u>Key Personnel</u> | <u>General Expertise</u> | <u>Relevant Experience</u> |
| | 1 - Project Engineer | Licensed Civil Engineer | At least five (5) years experience in related works |
| | 1 - Construction Foreman | B.S. Civil Engineering Graduate | At least three (3) years experience in similar works |
| | | Civil Engineering Technology Graduate | At least five (5) years experience in similar works |
| | | Non-graduate | At least five (5) years working experience as Construction Foreman in similar works |
| | 1 - Construction Safety and Health Officer (SO2) | Construction Safety Officer 2 | At least forty (40) hours of Construction Safety and Health (COSH) Training from Occupational Safety and Health Center (OSHC) or Safety Training Organizations (STOs) accredited by the Department of Labor and Employment (DOLE). Must be present during the whole duration of the project) |

| | | |
|-----------------------------------|-------|---|
| 1 – Electrician | NCII | At least three (3) years' experience in Electrical works |
| 2 –Technician (CCTV installer) | | At least three (3) years' experience in CCTV installation works |
| 1– Welder | NC II | At least three (3) years' experience in welding/cutting works |

(1) Valid Professional Regulation Commission (PRC) license for professional personnel; (2) Certificate of Training with accreditation from DOLE for the Construction Safety & Health Officer; (3) TESDA Training Certificate (NC II) of Welders, Electrician, Plumber & etc. (if applicable); and (4) Diploma and/or Service Record/Certificate of Employment of previous and/or current employer for Project Engineer, Safety Officer, Construction Foreman, Welder, Electrician, Plumber, Technician and etc. (if applicable) ***shall be submitted and included as an attachment in Standard Form NPCMGNSF-INFRA-05: List of Key Personnel Proposed to be Assigned to the Contract.***

Project Engineer or Foreman and Construction Safety & Health Officer maybe one person, as long as he meets the requirements of the two positions. Provided however, that there is no overlapping of projects undertaken by the same contractor and supervised by the same person.

The above key personnel must be either employed by the applicant or contracted by the applicant to be employed for the contract to be bid.

| | | | |
|------|---|------------------------|------------------------|
| 10.5 | The minimum major equipment requirements are the following: | | |
| | <u>Equipment</u> | <u>Capacity</u> | <u>Number of Units</u> |
| | Concrete Mixer | 11 -bagger cap. | One (1) |
| | Concrete Vibrator, | | One (1) |
| | Pen Type | | |
| | Welding Machine | 300Amp At least 3.0 | One (1) |

| | | | |
|------|--|---------|---------|
| | Mini Dump Truck | QTY: ML | One (1) |
| 12 | N/A | | |
| 15.1 | <p>The bid security shall be in the form of a Bid Securing Declaration or any of the following forms and amounts:</p> <p>a. The amount of not less than PHP59,999.94 (2% of ABC), if bid security is in cash, cashier's/manager's check, bank draft/guarantee or irrevocable letter of credit;</p> <p>b. The amount of not less than PHP149,999.86(5% of ABC), if bid security is in Surety Bond.</p> | | |
| 19.2 | Partial bids are allowed, as follows: | | |
| 20 | <p>Additional documents to be submitted during Post-Qualification:</p> <ol style="list-style-type: none"> Other appropriate licenses and permits required by law and stated in the Bidding documents. <ol style="list-style-type: none"> Original Bank Statement as of April 30, 2022; Valid and updated PhilGEPS Registration (Platinum Membership)(all pages); Registration Certificate from Securities and Exchange Commission (SEC), Department of Trade and Industry (DTI) for sole proprietorship, or Cooperative Development Authority (CDA) for cooperatives or its equivalent document; Mayor's or Business permit issued by the city or municipality where the principal place of business of the prospective bidder is located, or the equivalent document for Exclusive Economic Zones or Areas; Valid Tax clearance per E.O. No. 398, s. 2005, as finally reviewed and approved by the Bureau of Internal Revenue (BIR). Quarterly Income Tax Returns filed and paid through the BIR Electronic Filing and Payment System (eFPS); The prospective bidder's audited financial statements, showing, among others, the prospective bidder's total and current assets and liabilities, stamped "received" by the BIR or its duly accredited and authorized institutions, for the preceding calendar year which should not be earlier than two (2) years from the date of bid submission; Philippine Contractors Accreditation Board (PCAB) License; Board of Accountancy (BOA) Certificate; Contract and/or Notice of Award as supporting documents for NPC MinGen Form No. NPCMGNSF-INFRA-01, if applicable; (a) Valid Professional Regulation Commission (PRC) license for professional personnel; (b) Certificate of Training with accreditation | | |

| | |
|----|---|
| | <p><i>from DOLE for the Construction Safety & Health Officer; (c) TESDA Training Certificate (NC II) of Welders or Electrician; and (d) Diploma and/or Service Record/Certificate of Employment of previous and/or current employer for Construction Foreman, Welders, Electrician & Plumber - as supporting documents for NPC MinGen Form No. NPCMGNSF-INFR-05, if applicable.</i></p> <p><i>4. Certificate of Site Inspection issued by Plant/Department Manager or his authorized representative.</i></p> |
| 21 | <p>Additional contract documents relevant to the Project that may be required by existing laws and/or the Procuring Entity, <u>prior to contract signing</u>, such as:</p> <ul style="list-style-type: none"> a) Approved construction schedule and S-curve b) Approved manpower schedule c) Construction methods d) Approved equipment utilization schedule e) Construction safety and health program approved by the DOLE f) Approved Project Evaluation Review Technique/Critical Path Method (PERT/CPM) |

Section IV. General Conditions of Contract

1. Scope of Contract

This Contract shall include all such items, although not specifically mentioned, that can be reasonably inferred as being required for its completion as if such items were expressly mentioned herein. All the provisions of RA No. 9184 and its 2016 revised IRR, including the Generic Procurement Manual, and associated issuances, constitute the primary source for the terms and conditions of the Contract, and thus, applicable in contract implementation. Herein clauses shall serve as the secondary source for the terms and conditions of the Contract.

This is without prejudice to Sections 74.1 and 74.2 of the 2016 revised IRR of RA No. 9184 allowing the GPPB to amend the IRR, which shall be applied to all procurement activities, the advertisement, posting, or invitation of which were issued after the effectivity of the said amendment.

2. Sectional Completion of Works

If sectional completion is specified in the **Special Conditions of Contract (SCC)**, references in the Conditions of Contract to the Works, the Completion Date, and the Intended Completion Date shall apply to any Section of the Works (other than references to the Completion Date and Intended Completion Date for the whole of the Works).

3. Possession of Site

- 4.1. The Procuring Entity shall give possession of all or parts of the Site to the Contractor based on the schedule of delivery indicated in the **SCC**, which corresponds to the execution of the Works. If the Contractor suffers delay or incurs cost from failure on the part of the Procuring Entity to give possession in accordance with the terms of this clause, the Procuring Entity's Representative shall give the Contractor a Contract Time Extension and certify such sum as fair to cover the cost incurred, which sum shall be paid by Procuring Entity.
- 4.2. If possession of a portion is not given by the above date, the Procuring Entity will be deemed to have delayed the start of the relevant activities. The resulting adjustments in contract time to address such delay may be addressed through contract extension provided under Annex "E" of the 2016 revised IRR of RA No. 9184.

4. The Contractor's Obligations

The Contractor shall employ the key personnel named in the Schedule of Key Personnel indicating their designation, in accordance with **ITB** Clause 10.3 and specified in the **BDS**, to carry out the supervision of the Works.

The Procuring Entity will approve any proposed replacement of key personnel only if their relevant qualifications and abilities are equal to or better than those of the personnel listed in the Schedule.

5. Performance Security

- 5.1. Within ten (10) calendar days from receipt of the Notice of Award from the Procuring Entity but in no case later than the signing of the contract by both parties, the successful Bidder shall furnish the performance security in any of the forms prescribed in Section 39 of the 2016 revised IRR.
- 5.2. The Contractor, by entering into the Contract with the Procuring Entity, acknowledges the right of the Procuring Entity to institute action pursuant to RA No. 3688 against any subcontractor be they an individual, firm, partnership, corporation, or association supplying the Contractor with labor, materials and/or equipment for the performance of this Contract.

6. Site Investigation Reports

The Contractor, in preparing the Bid, shall rely on any Site Investigation Reports referred to in the SCC supplemented by any information obtained by the Contractor.

7. Warranty

- 7.1. In case the Contractor fails to undertake the repair works under Section 62.2.2 of the 2016 revised IRR, the Procuring Entity shall forfeit its performance security, subject its property(ies) to attachment or garnishment proceedings, and perpetually disqualify it from participating in any public bidding. All payables of the GOP in his favor shall be offset to recover the costs.
- 7.2. The warranty against Structural Defects/Failures, except that occasioned-on force majeure, shall cover the period from the date of issuance of the Certificate of Final Acceptance by the Procuring Entity. Specific duration of the warranty is found in the SCC.

8. Liability of the Contractor

Subject to additional provisions, if any, set forth in the SCC, the Contractor's liability under this Contract shall be as provided by the laws of the Republic of the Philippines.

If the Contractor is a joint venture, all partners to the joint venture shall be jointly and severally liable to the Procuring Entity.

9. Termination for Other Causes

Contract termination shall be initiated in case it is determined *prima facie* by the Procuring Entity that the Contractor has engaged, before, or during the implementation of the contract, in unlawful deeds and behaviors relative to contract acquisition and implementation, such as, but not limited to corrupt, fraudulent, collusive, coercive, and obstructive practices as stated in ITB Clause 4.

10. Dayworks

Subject to the guidelines on Variation Order in Annex "E" of the 2016 revised IRR of RA No. 9184, and if applicable as indicated in the SCC, the Dayworks rates in the Contractor's Bid shall be used for small additional amounts of work only when the Procuring Entity's Representative has given written instructions in advance for additional work to be paid for in that way.

11. Program of Work

- 11.1. The Contractor shall submit to the Procuring Entity's Representative for approval the said Program of Work showing the general methods, arrangements, order, and timing for all the activities in the Works. The submissions of the Program of Work are indicated in the SCC.
- 11.2. The Contractor shall submit to the Procuring Entity's Representative for approval an updated Program of Work at intervals no longer than the period stated in the SCC. If the Contractor does not submit an updated Program of Work within this period, the Procuring Entity's Representative may withhold the amount stated in the SCC from the next payment certificate and continue to withhold this amount until the next payment after the date on which the overdue Program of Work has been submitted.

12. Instructions, Inspections and Audits

The Contractor shall permit the GOP or the Procuring Entity to inspect the Contractor's accounts and records relating to the performance of the Contractor and to have them audited by auditors of the GOP or the Procuring Entity, as may be required.

13. Advance Payment

The Procuring Entity shall, upon a written request of the Contractor which shall be submitted as a Contract document, make an advance payment to the Contractor in an amount not exceeding fifteen percent (15%) of the total contract price, to be made in

lump sum, or at the most two installments according to a schedule specified in the SCC, subject to the requirements in Annex "E" of the 2016 revised IRR of RA No. 9184.

14. Progress Payments

The Contractor may submit a request for payment for Work accomplished. Such requests for payment shall be verified and certified by the Procuring Entity's Representative/Project Engineer. Except as otherwise stipulated in the SCC, materials and equipment delivered on the site but not completely put in place shall not be included for payment.

15. Operating and Maintenance Manuals

- 15.1. If required, the Contractor will provide "as built" Drawings and/or operating and maintenance manuals as specified in the SCC.
- 15.2. If the Contractor does not provide the Drawings and/or manuals by the dates stated above, or they do not receive the Procuring Entity's Representative's approval, the Procuring Entity's Representative may withhold the amount stated in the SCC from payments due to the Contractor.

SECTION V – SPECIAL CONDITIONS OF
CONTRACT

Section V. Special Conditions of Contract

SECTION V - SPECIAL CONDITIONS OF
CONTRACT

Special Conditions of Contract

| GCC Clause | |
|------------|--|
| 2 | Sectional completion is not specified. |
| 4.1 | The Procuring Entity shall give possession of the Site to the Contractor <i>on the start date</i> . |
| 6 | The site investigation reports are: NONE |
| 7.2 | Fifteen (15) years |
| 10 | Dayworks are not applicable to the contract. |
| 11.1 | The Contractor shall submit the Program of Work to the Procuring Entity's Representative <u>upon contract signing</u> or within <u>three (3)</u> days of delivery of the Notice of Award. |
| 11.2 | The amount to be withheld for late submission of an updated Program of Work is Fifty (50) % of the billed amount. The updating of Program of Work shall be done bi-monthly. |
| 13 | The amount of the advance payment is 15% of contract amount and paid in lump sum. |
| 14 | No further instruction. |
| 15.1 | The date by which operating and maintenance manuals are required is upon completion of the project. The date by which "as built" drawings are required is upon completion of the project. |
| 15.2 | The amount to be withheld for failing to produce "as built" drawings and/or operating and maintenance manuals by the date required is one hundred percent (100%) of the final billing. |

Section VI. Specifications

PROJECT HIGHLIGHTS

PH-1.0 GENERAL

The purpose for Construction of (4) Four Units Guard Towers w/ CCTV is to provide additional Post and security visibility for security personnel at the Agus 6 HPP Surge Tank and Dam areas.

PH-2.0 LOCATION

The project is located at Agus 6 Surge Tank and Dam premises, Barangay Ditucalan, Iligan City.

PH-3.0 SCOPE OF WORK

The major activities shall include but not limited to the following:

1. *Mobilization/establishment of contractor's complete construction camp and other facilities.*
2. *Clearing and site preparation.*
3. *Lay-outing of site & assembly of reinforcement steel bars.*
4. *Preparation of formworks.*
5. *Concreting works and installation of perimeter fence (refer drawing sheets no. 16 & 17).*
6. *Fabrication of steel structures including trusses and roofings.*
7. *Installation of toilet and wall mounted sink including water supply.*
8. *Electrical rough-ins, installation of walls and ceiling.*
9. *Installation of lightings including CCTV and Ceiling fans.*
10. *Application of paints and installation of NPC Logo (rubberized type sticker)*
11. *Demobilization including site demolition of contractor's camp facilities.*
12. *Turnover of project.*



PH-4.0 CONTRACT PERIOD

The work duration of the entire project is One Hundred Twenty (120) Calendar Days reckoned from receipt of the Notice to Proceed.

The total contract period is inclusive of five (5) rainy/unworkable days considered unfavorable for the execution of works at site. The contract period shall be reckoned from the date of contract effectively as specified in the Notice to Proceed.

PH-5.0 CONTRACTOR'S CLASSIFICATION

The contractor must have a valid Philippine Contractor's Accreditation Board (PCAB) license of at least **Category C or D – General Building** with inter-agency registration of at least **Small B – (Building & Industrial Plant)**.

TECHNICAL SPECIFICATIONS

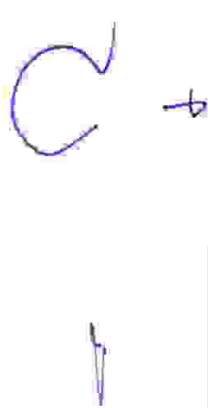
In accordance with the specifications provided in the plans, the contractor shall furnish all materials, labor, tools, equipment and other incidentals, and shall undertake the complete at Agus 6 HEP, Fuentes, Brgy. Maria Cristina, Iligan City.

All materials to be used shall conform to applicable standard. If upon visual inspection the materials appear to be of poor quality or fail to meet the standard, the NPC inspector has the authority to reject the same out rightly.

The Contractor shall perform all activities necessary for the completion of the project satisfactory to NPC and in accordance with the approved plans and these specifications.

Scope

This section covers the construction and/or maintenance of access roads, drainage system and other appurtenant structures, moving-in of the Contractor's construction equipment, setting up of the Contractor's camp and the disposition of the Contractor's various facilities at the end of the Contract.



Moving-in

The contractor shall bring to the site all his necessary construction equipment and plant and install all stationary construction equipment and plant at location and in the manner approved by the NPC. The Contractor shall submit sufficient detailed plans showing the proposed location of such stationary equipment and plant and other pertinent data. No installation of such stationary equipment shall be undertaken unless the corresponding plans have been approved by the NPC.

Contractor's Camp Facilities

The Contractor shall provide and grade his camp site, construct his camp, employee housing, warehouse, machine and repair shops, fuel storage tanks and provide such related facilities and sanitary conveniences that the Contractor deems necessary for maintaining health, peace and order in the camp and work areas. The areas that may be used by the Contractor within the plant site shall be designated by the NPC.

The Contractor shall provide, maintain and operate, under competent direction, such camps and facilities as are necessary for the housing, feeding and accommodation of his employees.

Water Supply

The Contractor shall, at his own expense, be responsible for the supply, installation, operation and maintenance of a safe and adequate supply of drinking and domestic water.

Sewerage Disposal and Sanitation

The Contractor shall, at his own expense, be responsible for the installation, operation and maintenance of an adequate sewerage disposal and sanitation system and shall provide adequate toilet and wash-up facilities for his employees at his camp and in the areas where work is being carried out.

The Contractor shall execute the work with due regard to adequate sanitary provisions and applicable codes and shall take all

-6

necessary steps to prevent the pollution of water in any spring, river, or other sources of water supply. All toilets or wash-up facilities shall be subject to the prior and continuing approval of the NPC.

Fire Protection

The Contractor shall observe all necessary precautions against fire, shall provide and maintain at his own expense, portable fire-fighting equipment he may deem necessary, and shall comply with all applicable laws of the Philippines relating thereto.

In the event of an uncontrollable fire occurring in the area of the Contractor's operation, the Contractor shall have to extinguish the fire immediately at his own expense, to the full extent of the manpower and equipment employed under the contract at the time of the fire.

The Contractor shall indemnify NPC against all liabilities, claims, damages and/or lawsuits arising thereto.

Construction Power

The Construction shall be responsible for providing his own electric power supply required for construction and erection/installation. If power is available from NPC and should the Contractor elect to utilize the NPC's power supply, he shall make an arrangement with NPC concerned group as to the billing rates and other requirements needed for direct connection to NPC.

Camp Security

The Contractor shall provide his own security force to the extent that he deems necessary for maintaining peace and order in the camp and work areas and to safeguard materials and equipment. Nothing under the provisions of this paragraph shall relieve the Contractor from full responsibility for the maintenance of peace and order and protection of life and property in all areas where he operates.



Construction Material Storage

The Contractor is required to put up warehouse(s) with capacities sufficient to store the construction materials required in the work. the warehouse(s) shall be specifically for this contract, notwithstanding his other facilities in the site that may serve the purpose.

Removal of Camp and Construction Facilities

After the completion of the work covered by the contract and prior to acceptance of the completed work, the entire camp facilities of the Contractor, including its water supply system, electric distribution system, quarters, warehouses, shops, dining halls, commissaries, temporary shed and other facilities therein shall be removed by the Contractor. The site shall be cleared and cleaned as directed by the NPC.

MEASUREMENT AND PAYMENT

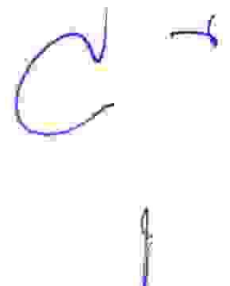
No separate measurement and payment will be made for the Contractor's Construction Facilities. The entire cost thereof shall be included in the various pay items in the Bill of Quantities.

CARE OF WATER DURING CONSTRUCTION**Scope**

In accordance with the specifications contained in this section or otherwise directed, the Contractor shall construct and maintain all necessary temporary drainage ditches and other temporary protective works and he shall also furnish, install, maintain and operate necessary pumping equipment and other devices to protect construction operation free from water coming from any source, including rain.

Drainage and Dewatering

The Contractor shall be responsible for dewatering foundation areas so that work can be carried out on a suitably dry condition. The Contractor shall construct drainage ditches, holes, culverts, furnish, maintain and operate at his own expense all necessary



pumps and other dewatering devices to keep all work area free from water.

After the work is completed and before it is accepted by the NPC, the Contractor shall remove all pumping equipment and shall remove, fill or plug all temporary drainage structures as directed, all at his expense.

MEASUREMENT AND PAYMENT

No separate measurement and payment will be made for the Care of Water during Construction operations. The cost of furnishing, constructing, maintaining, operating and removing of temporary drainage structure, pumping system and other dewatering devices necessary to keep construction operations free from water, shall be included in the various pay items in the Bill of Quantities for structures where such care of water is required.

TS - 01 ENVIRONMENTAL AND CONSTRUCTION SAFETY AND HEALTH PROGRAM

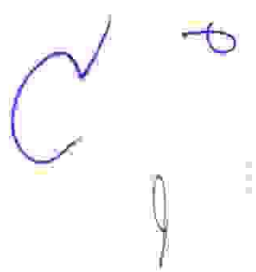
Scope

This Section pertains to the environmental and safety provisions, requirements and conditions that shall govern during the execution of all civil works under this project.

General Conditions

The Contractor shall ensure compliance with the applicable environmental and safety regulations, as well as ECC conditions, during installation/construction of this project through the implementation of measures that include, but not limited to the following:

- a. Designate a Safety Officer and a Pollution Control Officer who shall respectively handle all safety and environmental concerns of the project.



SECTION VI - SPECIFICATIONS

PR NO./REF. NO.: MG-A7M22-080

- b. Prepare and submit Construction Safety Health Plan (CSHP)
- c. Properly manage debris and various waste generated during installation/construction, such as the following:
 - Dispose of demolition and construction debris in a designated or NPC approved disposal area(s);
 - Stockpile (and cover if possible) or haul to the designated and/or pre developed dump sites (spoil disposal areas) that shall be provided with suitable drainage-equipped with sediments traps, stripped top soil, spoils from quarry/borrow sites and excavated materials;
 - Segregate solid wastes, such as empty cement sacks, scraps of tin or wood, used wires and other domestic, garbage, for recycling or storage in NPC-approved temporary storage areas and further disposal to LGU-designated disposal sites
 - Properly handle, store and dispose off, through DENR-accredited transporter/treater, hazardous wastes i.e. used oils, paints, thinner. Etc.
- d. Limit construction activities that generate excessive noise to daytime works only to prevent nuisance to nearby residents during rest hours.
- e. As far as practicable, undertake site stripping, grading and excavation during dry weather.
- f. Construction/Installation shall be carried-out in a manner where landslides and erosions are minimized.
- g. Avoid unnecessary opening/clearing of areas outside construction sites or destruction of vegetable cover, especially cutting of existing trees; and to revegetate disturbed areas.
- h. Spray water, whenever and wherever necessary, to minimize dust generation.



- i. Provide PPE's and other safety provisions required by DOLE, for its project/site works.

MEASUREMENT AND PAYMENT

Measurement and payment shall be made at the contract unit price or lot price as specified in the Bid Price Schedule. Payment shall include all cost in furnishing labor, materials, tools equipment and other incidentals necessary for the satisfactory implementation of these requirements.

TS - 02 EARTHWORKS

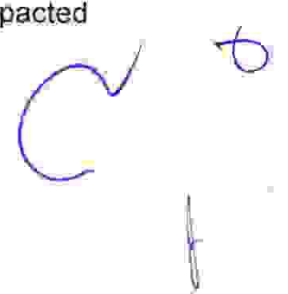
a. Site Clearing, Grubbing (Cutting of Vegetation and Pruning of Trees) and Hauling of Materials

All surface objects and all trees, stumps, roots and other protruding obstructions, not designated to remain, shall be cleared and/or grubbed, including mowed as required, except as provided below:

1. Removal of undisturbed stumps and roots and nonperishable solid objects with a minimum depth of 1 meter below subgrade or slope of embankment will not be permitted.
2. In areas outside of the grading limits of cut and embankment areas, stumps and nonperishable solid objects shall be cut not more than 150 mm above the ground line or low water level.
3. Grubbing of pits, channel changes and ditches will be required only to the depth necessitated by the proposed excavation within such areas.

Except in areas to be excavated, stump holes and other holes from which obstructions are removed shall be backfilled with suitable material and compacted to the required density.

In areas where hand clearing as directed by NPC Engineer or Representative, no requirement of wheels or trucks shall be used. Care shall be taken to ensure that the grass, moss cover, or the natural ground is not disturbed. The materials shall be properly disposed. Materials and debris may be disposed of by the methods and at locations approved by NPC Engineer or Representative, on or off the project. If disposal is by burying, the debris shall be placed in layers with the material so disturbed to avoid nesting. Each layer shall be covered or mixed with earth material by the land-fill method to fill all voids. The top layer of material buried shall be covered with at least 300mm of earth or other approved material and shall be graded, shaped and compacted



SECTION VI - SPECIFICATIONS

PR NO./REF. NO.: MG-A7M22-080

to present a pleasing appearance. If the disposal location is off the project, the Contractor shall make all necessary arrangements with property owners in writing for obtaining suitable disposal locations which are outside the limits of view from the project. The cost involved shall be included in the unit bid price. A copy of such agreement shall be furnished to NPC Engineer or Representative. The disposal areas shall be seeded, fertilized and mulched at the Contractor's expense.

Woody material may be disposed of by chipping. The wood chips may be used for mulch, slope erosion control or may be uniformly spread over selected areas as directed by NPC Engineer or Representative. Wood chips used as mulch for slope erosion control shall have a maximum thickness of 12 mm and faces not exceeding 3,900 mm² on any individual surface area. Wood chips not designated for use under other sections shall be spread over the designated areas in layers not to exceed 75mm loose thickness. Diseased trees shall be buried or disposed of as directed by NPC Engineer or Representative. Timber cut inside the area staked for clearing shall be felled within the area to be cleared.

MEASUREMENT AND PAYMENT

Measurement and payment shall be made at the contract unit price or lot price as specified in the Bid Price Schedule. Payment shall include all cost in furnishing labor, materials, tools equipment and other incidentals necessary for the satisfactory implementation of these requirements.

b. Removal of Structure, Obstruction and Disposal**Description**

This Item shall consist of the removal wholly or in part, and satisfactory disposal of (all buildings, fences, structures) old pavements/slabs (abandoned pipe lines) and any other obstructions which are not designated or permitted to remain, except for the obstructions to be removed and disposed of under other items in the Contract. (It shall also include the salvaging of designated materials and backfilling the resulting trenches, holes and pits).

Construction Requirements**General**

The Contractor shall perform the work described above, within and adjacent to the construction site, on Government land or easement, as shown on the Plans or as directed by NPC Engineer. All designated salvable material shall be removed, without unnecessary damage, in sections or pieces which may be readily transported, and shall be stored by the Contractor at specified places on the project or as otherwise shown in the Special Provisions. Salvaged material which are damaged thru negligence shall be replaced or restored at the Contractor's expense. Waste material may be disposed of by the Contractor in NPC-owned sites as shown in the Special Provision or permitted by NPC Engineer. Otherwise, the Contractor shall arrange disposal of waste at no expense to NPC and shall be in accordance with the requirements for disposal site selection and hauling activity stipulated in the Contract. Perishable material shall be handled as designated in Clearing and Grubbing. Nonperishable material may be disposed of outside the limits of view from the project with written permission of NPC, the property owner on whose property the material is placed. Copies of all agreements with property owners are to be furnished to the Engineer. Basements or cavities left by the structure removal shall be filled with acceptable material to the level of the surrounding ground and, if within prism of construction, shall be compacted to the required density.

Removal of Portions of Existing Structure

Removal of portions of pavement, slabs, sidewalks, curbs, gutters, and similar structures shall be undertaken with sufficient care to avoid breakage or damage to the portion of the structures designated to remain. The portion of the structure shall be removed from an existing joint, or sawed and chipped to a true line with a vertical face. Before concrete removal begins, a saw cut, 19 mm deep when steel reinforcement is to remain and deeper when steel reinforcement is to be removed with concrete, shall be made into the surface of the concrete at the perimeter of the removal limits. Concrete shall be completely removed (exposing the deformed surface of the bar) from existing steel reinforcing bars which extend from the existing members and are specified to remain. Steel reinforcement that are to be removed shall be cut to a minimum of 25.4 mm behind the final surface, where void resulted to the removal thereof shall be filled with epoxy mortar and finished to a sound, smooth, uniform colored surface. The retained concrete surface at which fresh concrete surface will be placed shall be roughened, cleaned, and saturated. When a portion of existing concrete is removed without replacement, the concrete surface of the remaining portion shall be cleaned to a smooth surface of

less than 1.6 mm profile. In case of damage to the remaining structure, it shall be repaired or replaced at the Contractor's expense. For structures with an asphalt wearing course, the wearing course shall be removed separately before removing the portion designated to be removed.

MEASUREMENT AND PAYMENT

Measurement and payment shall be made at the contract unit price or lot price as specified in the Bid Price Schedule. Payment shall include all cost in furnishing labor, materials, tools equipment and other incidentals necessary for the satisfactory implementation of these requirements.

c. Site Development and Excavation Works

General

The work to be executed under this section shall include the furnishing of all, labor, tools and other facilities necessary for the satisfactory performance of all work necessary to complete the works specified in this specifications.

This Item shall include necessary diverting of live streams, bailing, pumping, draining, sheeting, bracing, and the necessary construction of cribs and cofferdams, and furnishing the materials therefor, and the subsequent removal of cribs and cofferdams and the placing of all necessary backfill.

It shall also include the furnishing and placing of approved foundation fill material to replace unsuitable material encountered below the foundation elevation of structures.

Construction Requirements

The Contractor shall notify the Engineer sufficiently in advance of the beginning of any excavation so that cross-sectional elevations and measurements may be taken on the undisturbed ground. The natural ground adjacent to the structure shall not be disturbed without permission of the Engineer.

Trenches or foundation pits for structures or structure footings shall be excavated to the lines and grades or elevations shown on the Plans or as staked by the Engineer. They shall be of sufficient size to permit the placing of structures or structure footings of the full width

2
C
1

SECTION VI - SPECIFICATIONS

PR NO./REF. NO.: MG-A7M22-080

and length shown in the drawings. The elevations of the bottoms of footings, as shown on the Plans, shall be considered as approximate only and the Engineer may order, in writing, such changes in dimensions or elevations of footings as may be deemed necessary, to secure a satisfactory foundation.

Boulders, logs, and other objectionable materials encountered in excavation shall be removed.

After each excavation is completed, the Contractor shall notify the Engineer to that effect and no footing, bedding material or pipe culvert shall be placed until the Engineer has approved the depth of excavation and the character of the foundation material.

All rock or other hard foundation materials shall be cleaned all loose materials, and cut to a firm surface, either level, stepped, or serrated as directed by the Engineer. All seams or crevices shall be cleaned and grouted. All loose and disintegrated rocks and thin strata shall be removed.

When the footing is to rest on material other than rock, excavation to final grade shall not be made until just before the footing is to be placed. When the foundation material is soft or mucky or otherwise unsuitable, as determined by the Engineer, the Contractor shall remove the unsuitable material and backfill with approved granular material. This foundation fill shall be placed and compacted in 150 mm (6 inches) layers up to the foundation elevation.

Utilization of Excavated Materials

All excavated materials, so far as suitable, shall be utilized as backfill or embankment. The surplus materials shall be disposed off in such manner as not to obstruct the stream or otherwise impair the efficiency or appearance of the structure. No excavated materials shall be deposited at any time so as to endanger the partly finished structure.

MEASUREMENT AND PAYMENT

Measurement and payment shall be made at the contract unit price or lot price as specified in the Bid Price Schedule. Payment shall include all cost in furnishing labor, materials, tools equipments and other incidentals necessary for the satisfactory completion of the project.

d. Backfilling Works**General**

The work to be executed under this section shall include the furnishing of all, labor, tools, equipment and other facilities necessary for the satisfactory performance of all work necessary to complete the works specified in this specifications.

Material Requirements

Embankments shall be constructed of suitable materials, in consonance with the following definitions:

Suitable Material – Material which is acceptable in accordance with the Contract and which can be compacted in the manner specified in this Item. It can be common material or rock.

Selected Borrow, for topping – soil of such gradation that all particles will pass a sieve with 75 mm (3 inches) square openings and not more than 15 mass percent will pass the 0.075 mm (No. 200) sieve, as determined by AASHTO T 11. The material shall have a plasticity index of not more than 6 as determined by ASSHTO T 90 and a liquid limit of not more than 30 as determined by AASHTO T 89.

Unsuitable Material – Material other than suitable materials such as:

- (a) Materials containing detrimental quantities of organic materials, such as grass, roots and sewerage.
- (b) Organic soils such as peat and muck.
- (c) Soils with liquid limit exceeding 80 and/or plasticity index exceeding 55.
- (d) Soils with a natural water content exceeding 100%.
- (e) Soils with very low natural density, 800 kg/m^3 or lower.
- (f) Soils that cannot be properly compacted as determined by the Engineer.

Handwritten marks: a large 'C' and a 'D' with a checkmark.

Construction Requirements**General**

Prior to backfilling works, all necessary clearing and grubbing in that area shall have been performed.

Backfills shall contain no muck, peat, sod, roots or other deleterious matter. Rocks, broken concrete or other solid, bulky materials shall not be placed in embankment areas where piling is to be placed or driven.

Where shown on the Plans or directed by the Engineer, the surface of the existing ground shall be compacted to a depth of 150 mm (6 inches) and to the specified requirements of this Item.

Methods of Construction

Backfill of earth material shall be placed in horizontal layers not exceeding 200 mm (8 inches), loose measurement, and shall be compacted as specified before the next layer is placed. However, thicker layer maybe placed if vibratory roller with high compactive effort is used provided that density requirement is attained and as approved by the Engineer. Trial section to this effect must be conducted and approved by the Engineer. Effective spreading equipment shall be used on each lift to obtain uniform thickness as determined in the trial section prior to compaction. As the compaction of each layer progresses, continuous leveling and manipulating will be required to assure uniform density. Water shall be added or removed, if necessary, in order to obtain the required density. Removal of water shall be accomplished through aeration by plowing, blading, discing, or other methods satisfactory to the Engineer.

Compaction

The Contractor shall compact the material placed in all embankment layers and the material scarified to the designated depth until a uniform density of not less than 95 mass percent of the maximum dry density determined by AASHTO T

MEASUREMENT AND PAYMENT

Measurement and payment shall be made at the contract unit price or lot price as specified in the Bid Price Schedule. Payment shall include all cost in furnishing labor, materials, tools equipment and other incidentals necessary for the satisfactory completion of the project.

TS- 03 ROOF FRAMING (WELDING AND STEEL WORKS)**General**

The work to be executed under this section shall include the furnishing of all, labor, tools, equipment and other facilities necessary for the satisfactory performance of all work necessary to complete all demolition and disposal works.

Work Included

- a) The work included under this section shall include the furnishing, fabrication, erection and/or installation of all steel roof framing, steel girts and other work indicated in the Plans and Specifications.

Materials

- a) All G. I. pipes shall be schedule 40 unless otherwise noted in the Plans.
- b) Rectangular tube and C-Purlins shall have a 1.00mm thickness
- c) Angle bars shall be have a thickness of 3/16"
- d) All arc-welding electrodes shall conform to the requirements of the American Welding Society "SPECIFICATIONS FOR IRON AND STEEL ARC- WELDING ELECTRODES" latest edition.

Connections

- a) Shop connections shall be welded unless otherwise indicated in the Plans. All connections shall develop full strength of members.

Workmanship and Fabrication

- a) Workmanship and fabrication shall be in accordance with AISC "Specification for Fabrication and Erection of Structural steel for Buildings" and with the following outline.
- b) Bearing surfaces shall be planed to true beds. Abutting surfaces shall be closely fitted

C

9

SECTION VI - SPECIFICATIONS

PR NO./REF. NO.: MG-A7M22-080

- c) All columns and bearing stiffeners shall be milled to give full bearing over the cross section. It shall not be necessary to plane bottom surfaces of plate on grout beds.
- d) Assembled parts shall be brought into close contact, and drift pin shall be used only for bringing members into position, not to enlarge or distort holes.

Welding Works

- a) Welding in shop and field shall be done by operators having been previously qualified by test prescribed in the American Welding society "Standard Qualification Procedure" to perform the type of work required.
- b) Equipment shall be of the type, which produce proper current so that operator may produce satisfactory welds. The welding machine shall be of 200 - 400 amperes, 200 -240 volts capacity.
- c) Unless otherwise shown on the Plans, the following low hydrogen electrodes shall be used and shall be suitable for positions and other conditions of intended use in accordance with the instruction with each container.

| <u>Welding</u> | <u>Electrode</u> | <u>Submerged Arc Process</u> |
|----------------|------------------|------------------------------|
| A-7 to A-7 | E - 60 Series | Grade SAW-2 |
| A-7 to A-36 | E - 70 Series | Grade SAW-2 |
| A-36 to A-36 | E - 70 Series | Grade SAW-2 |

- d) The technique of welding employed, the appearance and quality of welds made, and the methods of correcting defective work shall conform to the American Welding society code for arc welding in Building Construction, "Section 4, and Workmanship.

C

- e) Surfaces to be welded shall be free from loose scale, rust, grease, paint and other foreign material except that mill scale, which withstands vigorous wire brushing, may remain.
- f) Finish members shall be true to line and free from twists, bends and open joints.

Measurement and Payment

Measurement and payment shall be made at the contract unit price or lot price as specified in the Bid Price Schedule. Payment shall include all cost in furnishing labor, materials, tools equipment and other incidentals necessary for the satisfactory implementation of these requirements.

ROOFING WORKS AND SIDING SHEETS

General

The contractor shall furnish all labor, materials and operations including tools, other implements and accessories for the complete installation of roofing sheets wherever indicated in the drawings.

Installation shall be performed by skilled workmen in accordance with the construction and shop drawings and the manufacturer's standard.

Shop drawings and manufacturer's catalogue showing product standards and technical data will be provided by the Contractor to the NPC representative for approval.

Materials

Material for roofing shall be weather and chemical resistant. It shall be corrugated aluminum-zinc-silicon alloy coated metal sheet. Base metal shall be determined as specified in the drawing that shall range from 0.4 to 0.60mm thick. Branded sheets such as flat barge caps, flashings, ridge rolls, capping and mouldings that serve as its accessory components shall have the same composition with the roofing and sidings of which minimum thickness base metal shall be 0.5mm. Gutters likewise shall have the same material composition with base metal thickness of 0.50mm unless otherwise specified in the drawing commonly as stainless.

Workmanship

Roofing and siding sheets shall be securely fastened on purlins and channels by hook or stove bolts or self-drilling screws or as required. Fasteners shall have a maximum distance of 0.30m O.C. along purlins.

Special care shall be given to the joints, lapping, bolting and setting of closers.

Measurement and Payment

Measurement and payment for Roofing Works and Siding Sheets will be based on the projected area inspected and accepted by the NPC Representative. No measurement & payment will be made on hidden areas covered by side & end overlaps, the cost for these being included in the projected area.

Payment will be made at the corresponding unit price per square meter including ridge roll, flashing, capping for pertinent items in the Bill of Quantities.

TS-04 ELECTRICAL WORKS**Work Included**

The work included under this section shall include the furnishing, fabrication, erection and/or installation of electrical system and other steel work indicated in the Plans and Specifications.

Standard of Materials

All materials to be used in the work shall be new, of high quality, free from all defects and of proven acceptability from the purpose of intended. Unless otherwise specified, materials shall conform to the latest applicable standard issued by the following authorities:

- a) American National Standards Institute (ANSI)
- b) Institute of Electrical and Electronic Engineers (IEEE)
- c) Underwriter's Laboratory (UL)
- d) National Electrical Manufacturers Association (NEMA)
- e) National Electrical Code (NEC)
- f) Philippine Electrical Code (PEC)

Other recognized national standards maybe accepted if, in the opinion of NPC representatives, such will guarantee a quality not inferior to that guaranteed by the above standards.

Handwritten marks: a large blue 'C' and a small blue 'D'.

In case of conflicting requirements between authorities cited above and those specified, such disagreement shall be resolved by representative of which his decision shall be final.

Lighting System

The lighting system covered by this specification includes associated conduits and cables, lighting fixtures, fittings, etc.

The device/materials furnished shall be in accordance with, but not limited to, the latest issues of the Applicable Codes and Standards, including all addenda, in effect at time of purchase order unless otherwise stated in this Specification.

All materials and parts which are not specifically mentioned herein but are necessary for the proper installation and safe operation of the lighting system shall be identified by the Contractor and shall be furnished at no additional cost to NPC.

Lighting Fixtures and Accessories

Street Lighting Fixtures

All lighting fixtures when installed shall be free of leaks, warps, dents and other irregularities.

All lighting fixtures, samples and catalogues shall be submitted for NPC's review and approval prior to the order. No lighting fixtures shall be installed without the approval of NPC.

Lighting fixtures shall be wired with approved wire, 75°C insulation. Each fixture shall be wired to a single point with an adequate slack for proper connection. All lighting fixture shall be protected from damage during installation. Any broken lighting fixtures, receptacle, stem and the like shall be replaced with new parts, at no cost to NPC.

Cables / Wires

Cable shall be stranded annealed copper conductor suitable for continuous temperature of 90°C when used in wet or dry location and 90°C when exposed to oil or coolant. The minimum size of conductor to be used shall be 5.5mm²

b
C
f

SECTION VI - SPECIFICATIONS

PR.NO./REF. NO.: MG-A7M22-080

The cables shall be designed for trouble free service for the highest system voltage. All cables and their accessories to be supplied shall have insulation levels able to withstand any voltage surges which are normally expected to occur in the power system in which are normally expected to occur in the power system in which the cable is to be employed, due to switching operations, sudden load variation, faults, etc.

The cables and accessories shall be constructed to fulfill the requirements when operating with full load or any load factor and is suitable for use in ducts, trays and or direct burial in ground.

Cables Installation

Cable pulled through conduit shall be supported in an approved manner so as to avoid damaged to the insulation. Grease or oily substances shall not be used to facilitate the passage of the conductor in conduits.

The pull shall be applied to cables only by means of approved grips and the end portion of the cable which has been marked or deformed by the grip shall be cut-off by the Contractor.

All cable runs shall be continuous and all termination shall be at the terminal boards, equipment, etc. No splices are allowed in conduit or cable tray.

Prior to installation of cables, conduits shall be thoroughly cleaned to prevent damage to cables during installation. After cables have been installed, cables shall be tested for continuity and insulation resistance and shall be tagged with respective cable number

Conduits

All conduits, boxes and fittings required for the power and control conductors including necessary hardware and accessories such as screws, bolts, concrete inserts, clamps, locknuts, couplings shall be furnished by the Contractor. The required quantities shall be furnished in accordance with the installation requirements.

During installation, due precaution shall be taken to protect the conduit and threads from mechanical injury. The ends of the conduit shall be sealed in an approved manner. Conduit runs shall be sealed by the use of caps and discs or plugs. The seals shall be maintained, except during inspection and tests, until the conductor is pulled in. Conduit shall be checked to be free from obstructions by pulling a wooden mandrel of appropriate size through the conduit.

Conduits installed outdoors running underground shall be buried to a minimum of 0.457 m.

Measurement and Payment

Measurement and payment shall be made at the contract unit price or lot price of the various applicable items specified in the Bid Price Schedule. Payment shall include all cost in furnishing labor, materials, equipment and other incidentals necessary for the satisfactory completion of the project.

TS-05 MASONRY AND CARPENTRY**a. Ceiling Works****General**

The work to be executed under this section shall include the furnishing of all, labor, tools and ladders, scaffolding and other facilities necessary for the satisfactory performance of all work necessary to complete the works specified in this specifications.

Material

Materials to be used shall be the following but not limited to:

1. Double Furring
2. Wall Angle
3. 1/4" thick Fiber Cement Board
4. Blind Rivets

Workmanship

All work shall be done by skilled workers in a workmanlike manner.

Wall angles shall be firmly secured at the walls of the building through nails. All double furring shall be installed firmly and aligned. Nylon or string connected wall to wall shall be used so that correct level of furring will be attained. Fiber cement board shall be installed and secured on the furring through rivets or screws.

MEASUREMENT AND PAYMENT

Measurement and payment shall be made at the contract unit price or lot price as specified in the Bid Price Schedule. Payment shall include all cost in furnishing labor, materials, tools, equipment and other incidentals necessary for the satisfactory completion of the project.

Handwritten marks: a blue 'C' and a blue '1'.

b.Doors and Windows**General**

The work to be done under this section include the furnishing of materials, tools and equipment and performing labor required to complete flush type hollow core doors, panel doors, glass and roll-up type doors or as indicated in the drawings. This work also covers the fabrication of aluminum framed sliding window and fixed louver type window.

Doors shall be thoroughly seasoned, kiln-dried wood and pressure preservative treated. Doors and windows shall be products of reputable, known manufacturers in the locality approved by NPC.

All doors and windows shall be the type and size indicated in the drawings and as specified herein.

Workmanship

The contractor shall take special care in the manufacturing and assembly process of joint work. All joint works shall be done in accordance with accepted practices and shall be accurate and clean so as the joined elements fit perfectly together.

Analok aluminum frame shall fit the wall openings and shall be sturdy and fixed neatly at all corners.

Materials**Doors**

Panel Type – Panel shall be of first class quality wood and the color shall be approved by the NPC

Flush Type – Hollow Core PVC shall be of first class quality plastic and the color shall be approved by the NPC representative.

Windows

Awning/Sliding/Fixed louver Type Window – Glass window shall have a frame of 2" x 4" analok aluminum frame. All glass panels shall be 6mm thick and color bronze. Mesh wire shall have frame atleast 1" x 1" x 3mm thick Angle bar frame.

Installation

- a. Each door and window shall be accurately cut, trimmed and fitted to its frame and hardware.
- b. Allowance shall be given for painter's finish and possible swelling of shrinkage
- c. Clearance shall not exceed 3.2mm (1/8") at lock and hanging stiles and at top; and 6.3mm (1/4") at bottom.
- d. All corners shall be rounded to 0.07mm (1/26") radius. Lock and rail edges shall be slightly beveled.
- e. The screws for hardware shall not be driven, but merely started by driving and then screwed home.
- f. All doors and windows shall operate freely and with all hardware properly adjusted and functioning
- g. Doors shall be installed complete with finishing hardware, e.g. doorknob with key, hinges, doorstop, etc.
- h. Windows shall be sturdy and can withstand the force and pressure of the frequent opening and closing

Measurement and Payment

Measurement and payment shall be made at the contract unit price or lot price of the various applicable items specified in the Bid Price Schedule. Payment shall include all cost in furnishing labor, materials, equipment and other incidentals necessary for the satisfactory completion of the project.

c. Tile Works**General**

The work to be done under this section shall consist of furnishing of all labor, materials and other facilities to complete all tile works shown on the drawings and specified herein.

Materials

Floor tiles for rooms and hallways shall be 60cm x 60cm granite tiles. For toilet and bath tiles shall be 30cm x 30cm ceramic tiles.

Execution

All surfaces to receive tiles, shall be structurally sound, plumb level and true, free from dust, grease, calcimine water and other foreign matter

C

f

SECTION VI - SPECIFICATIONS

PR NO./REF. NO. MG-A7M22-080

All existing and old tiles shall be thoroughly removed before the new tiles will be installed.

Wall and floor surfaces with minor variations (1/8" or less) shall be true and smooth with a skim coat of adhesive applied with flat trowel. Allow to dry before spreading more adhesive for setting the tile.

Tile preparation

Tiles – may be set dry or pre-soaked depending on grouting methods to be used. Wall tile may be prepared by soaking in clear water for not less than 15 minutes. If pre-soaked method is used, drain excess water on tile before setting.

Grouting – After floor on tile have been in place for not less than four hours, all joints shall be grouted and cleaned. Tile which becomes dry after setting shall be soaked at the joints with wet sponge, or sprayed with water before grouting to prevent cracking of the grouting compound, grout used with floor tile must be kept moist properly cured.

Caulking – At completion of tile work, clean out joints between tile and other built-in fixtures and apply this bead of caulking compound tooled slightly below tile surface.

Clearing – Upon completion, clean all tile surfaces with warm water and a good washing compound and stiff brushes as recommended by tile manufacturer.

Protection – Before traffic is permitted over finished floor, cover floors with building paper. Lay board walkways on floor that are to be continuously used as passageway by workmen. Tile floor areas to be trucked over have suitably constructed continuous plank runaways of required width installed over building paper. Remove cracked, broken or damage tile and replace with new one.

Measurement and Payment

Measurement and payment shall be made at the contract unit price or lot price of the various applicable items specified in the Bid Price Schedule. Payment shall include all cost in furnishing labor, materials, equipment and other incidentals necessary for the satisfactory completion of the project.

Handwritten marks: a small circle and a large 'C' with a checkmark.

TS-06 PAINTING WORKS**GENERAL**

The work to be executed under this section shall include Painting Works existing and New Perimeter Steel or Concrete Fence and Steel Gates.

The Contractor shall examine all sections of this specification and perform all paintings called for therein.

INSPECTION OF SURFACES

Before starting the work, the Contractor shall inspect all surfaces to be painted. If the surfaces cannot be put in proper condition to receive paint by customary cleaning methods or sanding or sparkling, the Contractor shall notify the NPC representative in writing. The commencing of the work by the Contractor indicates his acceptance of the surfaces to be painted and assumes responsibility for the rectification of any unsatisfactory finishing, resulting from his negligence.

APPLICATION

The painting of structure shall include the proper preparation of the surface; the application, protection and drying of the paint coatings, the protection of the pedestrians, vehicular or other traffic upon or underneath the structures, the protection of all parts of the structure (both superstructure and substructure) against disfigurement by spatters, splashes and smirches of paint or of paint materials; and the supplying of all tools, tackle, scaffolding labor, paint and materials necessary for the entire work. Paint shall not be applied during rain, storms or when the air is misty, or when, in the opinion of the NPC Engineer, conditions are otherwise unsatisfactory for the work. Paint shall not be applied upon damp surfaces or upon metal which has absorbed heat sufficient to cause the paint to blister and produce a pervious paint film. No wide flat brush shall be used. All brushes preferably shall be either round or oval but if flat brushes are used, they shall not exceed 100 mm in width. The paint when applied shall be so manipulated as to produce a uniform even coating in close contact with the surface being painted, and shall be worked into all corners and crevices. On surfaces inaccessible to brushes, the paint

SECTION VI - SPECIFICATIONS

PR NO./REF. NO. MG-A7M22-080

shall be applied by spray gun or with sheepskin daubers specially constructed for the purposes. Paint shall be thoroughly stirred, preferably by means of mechanical mixers, before being removed from the containers, and, to keep the pigments in suspension shall be kept stirred while being applied.

PAINTING STRUCTURAL STEEL

Surfaces of metals to be painted shall be thoroughly cleaned of rust, loose mill, scale, dirt, oil or grease, and other foreign substances. Unless cleaning is to be done by sandblasting, all weld areas, before cleaning is begun, shall be neutralized with a proper chemical, after which they shall be thoroughly rinsed with water. Cleaning may be by any of the following three methods:

1. Hand Cleaning, The removal of rust, scale and dirt shall be done by the use of metal brushes, scrapers, chisels, hammers or other effective means. Oil and grease shall be removed by the use of gasoline or benzene. Bristle or wood fiber brushes shall be used for removing loose dust.
2. Sandblasting shall remove all scale and other substances down to the base metal. Special attention shall be given to the cleaning of corners and re-entrant angles. Before painting, sand adhering to the steel in corners and elsewhere shall be removed. The cleaning shall be approved by NPC Engineer prior to any painting. The material shall be painted before the rust forms and not later than 2 hours after cleaning.
3. Flame Cleaning Oil and grease shall be removed by washing with suitable solvent. Excess solvent shall be wiped from the work before proceeding with subsequent operation. The surface to be painted shall be cleaned and dehydrated (freed of occluded moisture) by the passage of oxyacetylene flames which have an oxygen to acetylene of at least one. The inner cones of these flames shall have a ratio length to port diameter of at least 8 and shall not be more than 4 mm center to center. The oxyacetylene flames shall be traversed over the surface of the steel in such manner and at such speed that the surface is dehydrated, and dirt, rust, loose scale, scale in the form of blisters or scabs, and similar foreign matter are freed by the rapid intense heating by the flames. The flames shall not be traversed so slowly that loose scale or other foreign matter is fused to the surface of the steel. The number, arrangement and manipulation of the flames shall be such that all parts of the surface are adequately cleaned and dehydrated. Promptly after the application of the flames, the surface of the steel shall be wire-brushed, hand scraped wherever necessary and then swept and dusted to remove all free materials and foreign particles. Compressed air shall not be used for this operation. Paint shall be applied promptly after the steel has been cleaned and while the temperature of the steel is still above that of the surrounding atmosphere, so that there will be no recondensation of moisture on the cleaned surfaces.

SHOP PAINTING OF STRUCTURAL STEEL

When all fabrication work is completed and has been tentatively accepted, all surfaces not painted before assembling shall be given two coats of Red Lead Shop Paint conforming to the requirements of this Specification. (The inside of top chords for trusses and laced members or inaccessible parts, except contact surfaces, may be painted before assembling). Shipping pieces shall not be located for shipment until thoroughly dry. No painting shall be done after loading the materials on transport vehicles

FIELD PAINTING OF STRUCTURAL STEEL

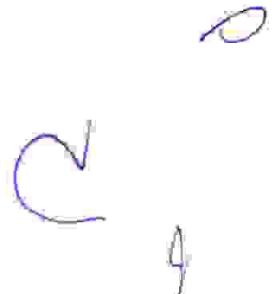
When the erection work is complete including riveting and straightening of bent metal; all adhering rust, scale, dirt, grease or other foreign material shall be removed as specified under cleaning of surfaces. As soon as NPC Engineer has examined and approved all field rivets, the heads of such rivets and field bolts, all welds and any surfaces from which the shop coat of paint has become worn off or has otherwise become defective, shall be cleaned and thoroughly covered with one coat of shop coat paint. When the paint applied for "touching up" rivet heads and abraded surfaces has become thoroughly dry, such field coats as called for shall be applied. In no case shall a succeeding coat be applied until the previous coat has dried throughout the full thickness of the film. All small cracks and cavities which were not sealed in water-tight manner by the first field coat shall be filled with a pasty mixture of red lead and linseed oil before the second field coat is applied.

PAINTING GALVANIZED SURFACE

For the purpose of conditioning the surface of galvanized surfaces to be painted, the painting shall be deferred as long as possible in order that the surface may weather.

Before painting galvanized surfaces, they shall be treated as follows:

1. In 4 liters of soft water, dissolve 60 ml of copper chloride, copper nitrate, and Sal ammonia, then add 60 ml of commercial muriatic acid. This should be done in earthenware or glass vessel, never in tin or other metal receptacle. Apply the solution with a wide flat brush to the galvanized surface, when it will assume a dark almost black color which on drying becomes a grayish film.
2. The surfaces, when dry, may then be painted as described.



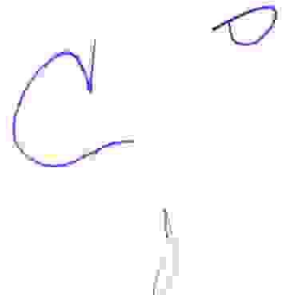
MEASUREMENT AND PAYMENT

Painting shall be measured in square meter (sq.m.) of painting completed in place and accepted. Measurement will be of the actual number of square meter within the neat lines of the structure as shown in the plans or revised by authority of the Engineer.

TS-07 CLEARING AND DEMOBILIZATION

Before moving out, the contractor shall restore the orderly state of worksite by clearing all temporary structures. Remove all excess/waste materials and store in designated areas.

Before the Contractor will demobilize its construction equipment/ tools, materials and crew, he shall secure approval from NPC security office for the release of the contractor's equipment and to surrender the workers Identification (I.D) cards. A joint inspection with the NPC inspector and Contractor will be conducted to make sure that all his accomplishment / work that needs remedial attention or correction shall be done prior to the issuance of the Certificate of Completion. The Certificate of Completion will serve as basis for the processing of payments.



Section VII. Drawings

| | |
|----------------------|---|
| Sheet No. 1/17 – | PERSPECTIVE |
| Sheet No. 2/17– | SITE LOCATION MAP |
| Sheet No. 3-4/17 – | FLOOR PLAN |
| Sheet No. 4-7/17 – | ELEVATION PLAN |
| Sheet No. 8/17 – | FOOTING-1 & COLUMN-1 DETAILS |
| Sheet No. 9/17 – | SECOND FLOOR FRAMING |
| Sheet No. 10/17 – | ROOF FRAMING PLAN |
| Sheet No. 11-12/17– | SCHEDULE OF DOORS & WINDOWS AND DETAILS |
| Sheet No. 13/17 – | SCHEDULE OF LOADS |
| Sheet No. 14-15/17 – | LIGHTING & OUTLET LAY-OUT |
| Sheet No. 16/17 – | FOOTING-2& COLUMN-2 DETAILS |
| Sheet No. 17/17 – | TYPICAL FENCE DETAILS |



GUARDHOUSE UNITS NO. 1, 2 & 3 DESIGN



GUARDHOUSE UNIT NO. 4 DESIGN



P E R S P E C T I V E

Scale:

NDTS



NATIONAL POWER CORPORATION

**MINDANAO GENERATION
AGUS 6/7 HEPC**

BRGY. MA. CRISTINA, FUENTES ILIGAN CITY

PROJECT TITLE:

**CONSTN OF (4) UNITS GUARD
TOWERS W/ CCTV & SEC
EQPT @ AGUS-6 SURGE TANK
& DAM**

LOCATION: AGUS 6 HPP

PREPARED BY:

W. A. ALFECHE

PLANT O&M DIV. MANAGER, AGUS 6 HPP

CHECKED & REVIEWED BY:

M. B. JABAY

PTSD MANAGER, AGUS 6/7 HPPC

RECOMMENDING
APPROVAL:

ATTY. E. L. RAMIREZ

PLANT MANAGER - AGUS 6/7 HPPC

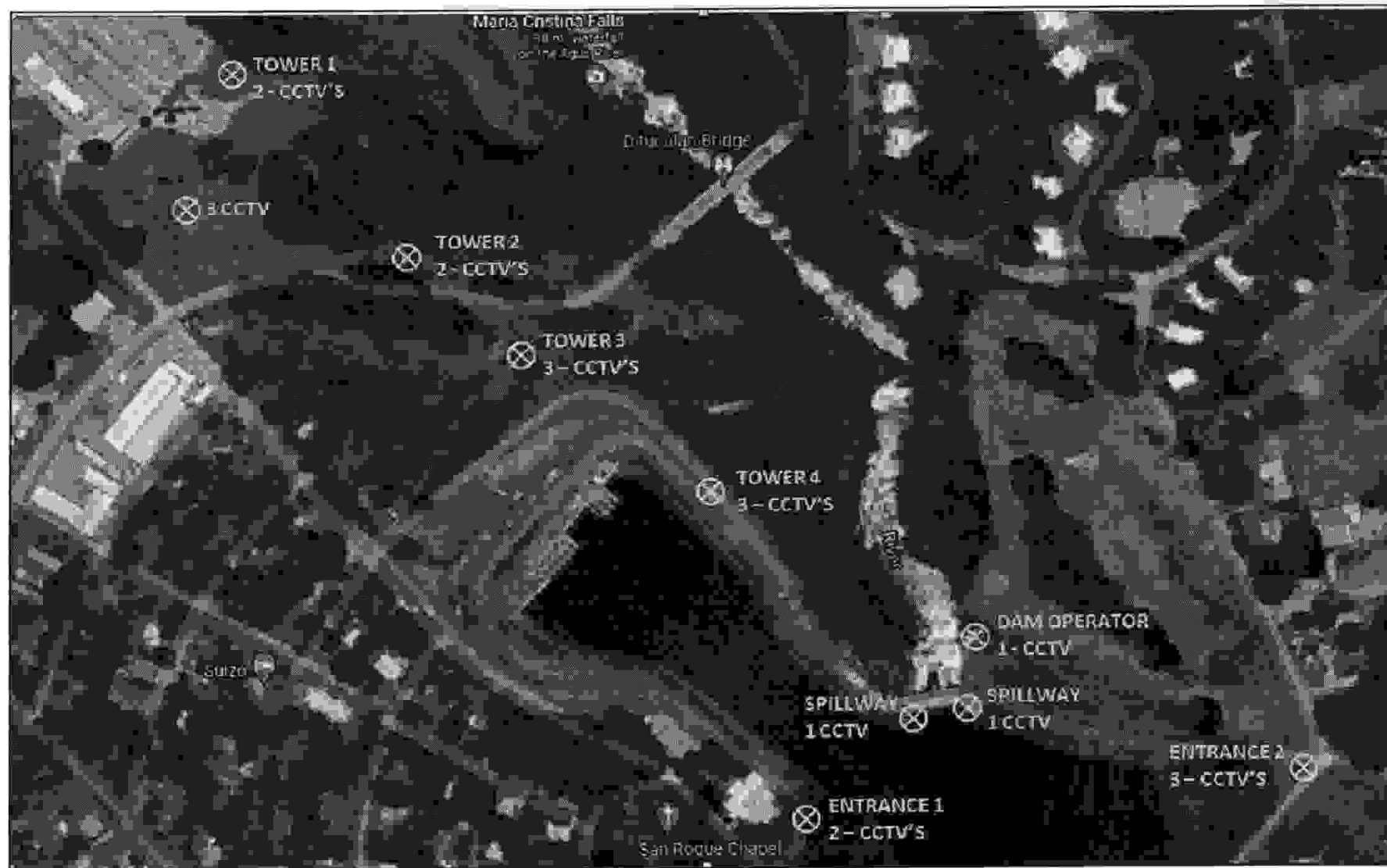
APPROVED BY:

E. A. VELOSO JR

VICE-PRESIDENT MINDANAO GENERATION

SHEET NO:

**1
17**



SITE LOCATION MAP

Scale:

NDTS



NATIONAL POWER CORPORATION

**MINDANAO GENERATION
AGUS 6/7 HEPC**

BROV. MAL. CRISTINA, FUENTES ILIGAN CITY

PROJECT TITLE:

**CONSTR. OF (4) UNITS GUARD
TOWERS W/ CCTV & SEC
EQPT @ AGUS-6 SURGE TANK
& DAM**

LOCATION: AGUS 6 HPP

PREPARED BY:

W. A. ALFECHE

PLANT DM DIV. MANAGER, AGUS 6 HPP

CHECKED & REVIEWED BY:

M. S. JABAY

PTSD MANAGER, AGUS 6/7 HPPC

**RECOMMENDING
APPROVAL:**

ATTY. E. L. RAMIREZ

PLANT MANAGER - AGUS 6/7 HPPC

APPROVED BY:

E. A. VELOSO JR.

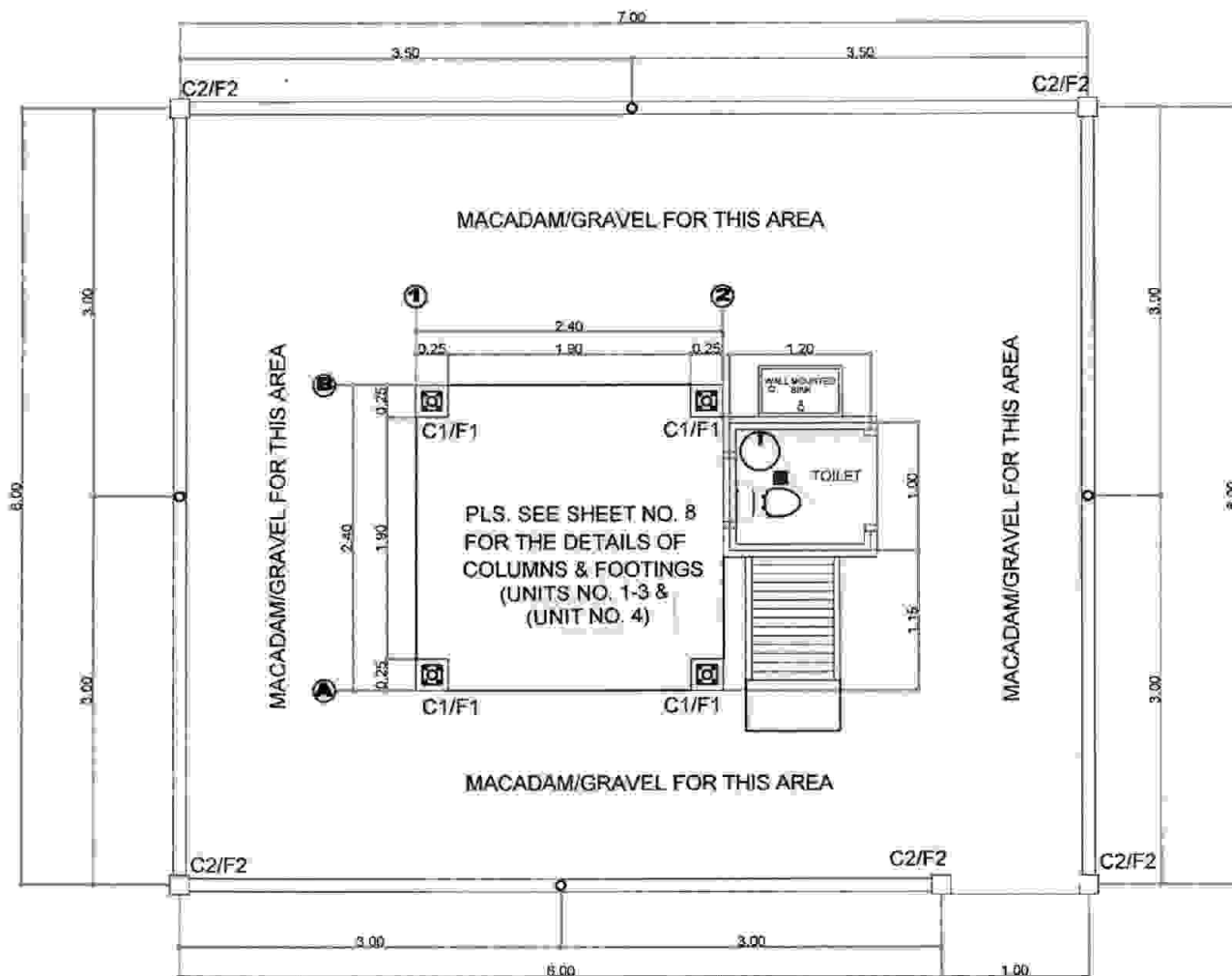
VICE-PRESIDENT MINDANAO GENERATION

SHEET NO:

**2
17**

NOTE:

1. TOILETS OF GUARD TOWERS 1, 2 & 3 MUST BE IN CONCRETE. INSTALLATION OF WATER SUPPLY CONNECTIONS IS INCLUDED ON THIS PROJECT.
2. THE TOILET OF GUARD TOWER NO. 4 IS NOT INCLUDED IN THE DESIGN PLAN BEING LOCATED AT THE TOPMOST AREA OF AGUS 6 DAM.
3. POSITIONING OF CCTV'S SHALL BE DETERMINED DURING IMPLEMENTATION FOR OPTIMUM COVERAGE.
4. SEE PBD FOR SPECIFICATION OF CCTV SYSTEM.
5. TOILET OF GUARDHOUSE UNIT NO. 4 IS NOT INCLUDED IN THE DESIGN, SINCE THE LOCATION IS IN THE TOPMOST OF THE AGUS 6 HPP DAM. THE REST OF THE DETAILS ARE THE SAME WITH UNITS NO. 1-3 DESIGN. PLEASE REFER TO SHEET NO. 5/B & 8 FOR OTHER DETAILS.



TYPICAL GROUND FLOOR PLAN OF THREE (3) UNITS GUARD TOWER

Scale:

1:100 mts



NATIONAL POWER CORPORATION

**MINDANAO GENERATION
AGUS 6/7 HPPC**

BRGY. MA. CRISTINA, FUENTES (LIGAN CITY)

PROJECT TITLE:

**CONSTR. OF (4) UNITS GUARD
TOWERS W/ CCTV & SEC
EQPT @ AGUS-6 SURGE TANK
& DAM**

LOCATION: AGUS 6 HPP

PREPARED BY:

W. A. ALFECHE

PLANT O/M DIV. MANAGER, AGUS 6 HPP

CHECKED & REVIEWED BY:

M. B. JABAY

PTSD MANAGER, AGUS 6/7 HPPC

**RECOMMENDING
APPROVAL:**

ATTY. E. L. RAMIREZ

PLANT MANAGER, AGUS 6/7 HPPC

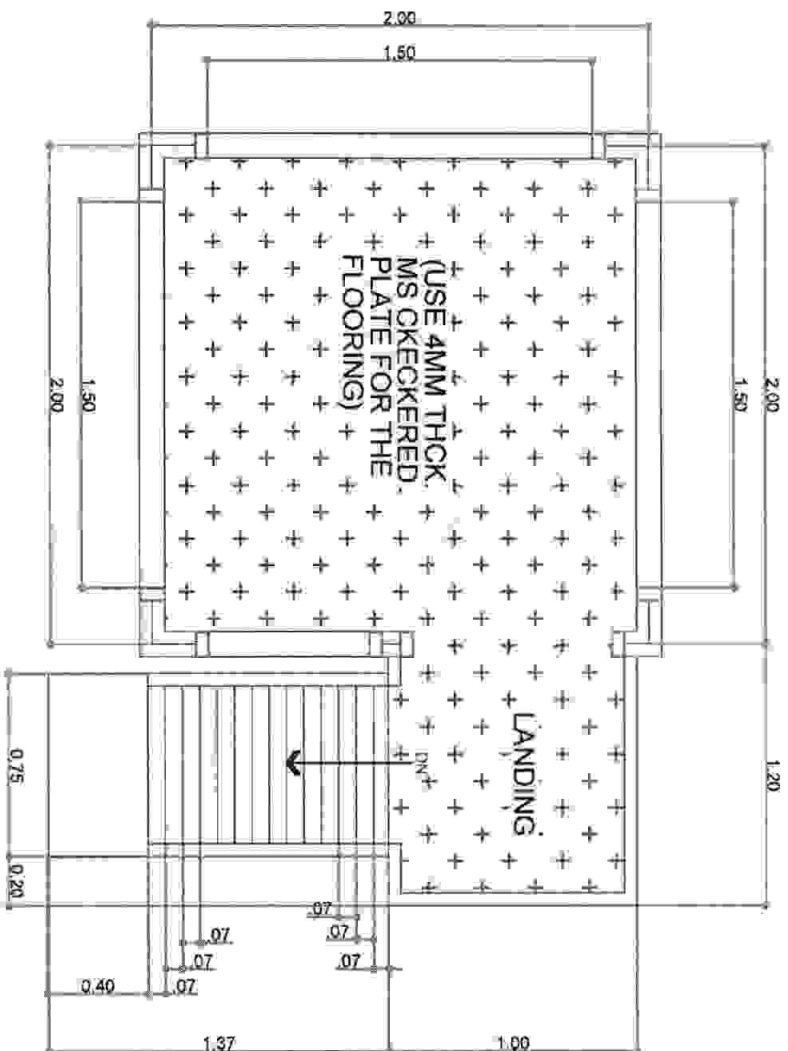
APPROVED BY:

S. A. VELOSO JR.

VICE-PRESIDENT, MINDANAO GENERATION

SHEET NO:

**3
17**



TYPICAL SECOND FLOOR PLAN OF FOUR (4) UNITS GUARD TOWERS

Scale

1:100 mbs



NATIONAL POWER CORPORATION
MINDANAO GENERATION
AGUS 8/7 HEPG
BROV. MA. CRISTINA, PUERTAS LIGAN CITY

| PROJECT TITLE | PREPARED BY | CHECKED & REVIEWED BY | RECOMMENDING APPROVAL | APPROVED BY | SHEET NO. |
|---|--------------------------------------|--------------------------|--------------------------|---------------------------------------|-----------|
| CONSTRN OF (4) UNITS GUARD TOWERS W/ CCTV & SEC EQUIT & AGUS-8 SURGE TANK & DAM | W. A. ALFECHE | M. E. JABRY | ATTY. E. L. RAMIREZ | J. A. VELOSO JR. | 217 |
| LOCATION AGUS 8 HPG | TO PLANT DIVISION MANAGER AGUS 8 HPG | PLANT MANAGER AGUS 8 HPG | PLANT MANAGER AGUS 8 HPG | MANAGING DIRECTOR MINDANAO GENERATION | |



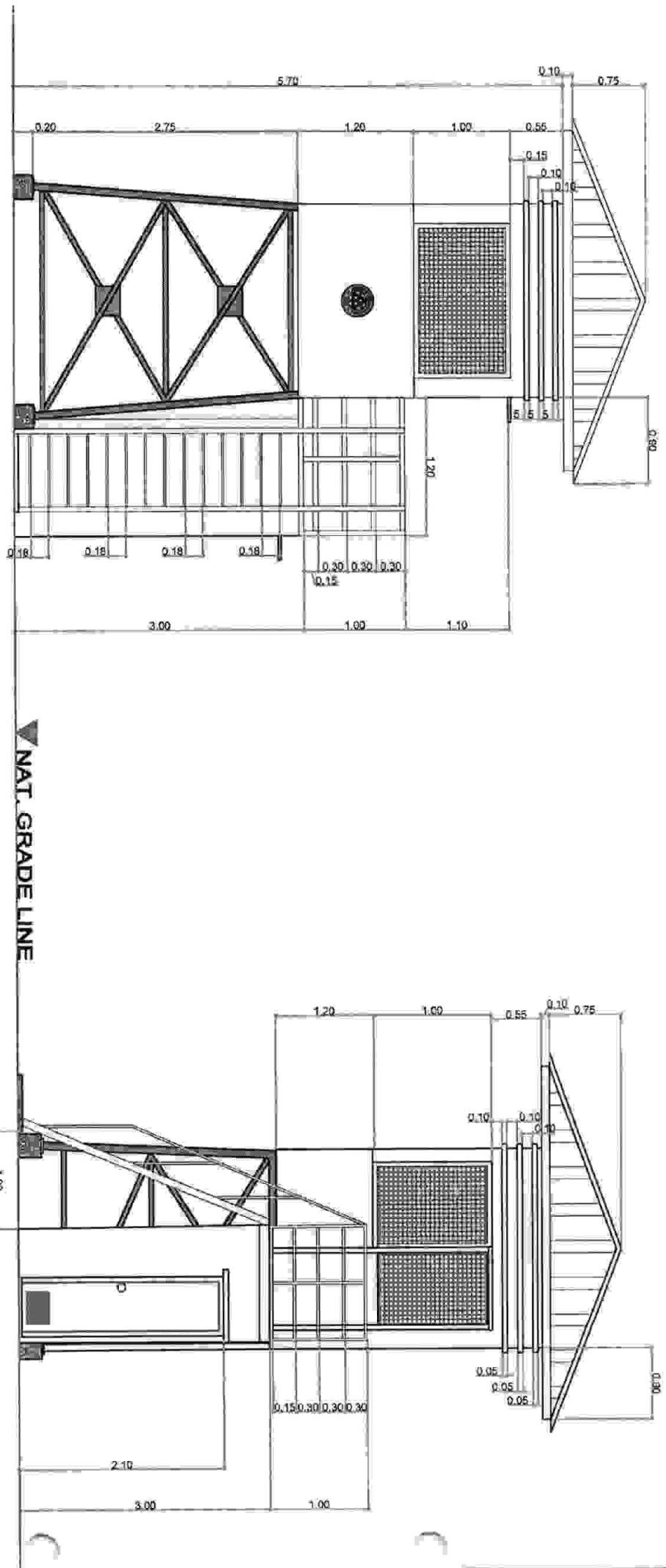
CONSTN OF (4) UNITS GUARD
TOWERS W/ CCTV & SEC
EQUIP @ AGUS-6 SURGE TANK
& DAM

W. A. ALPECHE

~~M. B. JIMENEZ~~

ATTY. E. L. RAMIREZ
PLANT MANAGER - AGUS S7 1970

E. A. VELOSO JR

[illegible]



NATIONAL POWER CORPORATION

MINDANAO GENERATION

AGUS 6/7 MEPC

PROJECT TITLE:
CONSTN OF (4) UNITS GUARD
TOWERS W/ CCTV & SEC
EQUIP @ AGUS-6 SURGE TANK
& DAM

PREPARED BY:
W. A. ALFECHE

CHECKED & REVIEWED BY:
M. B. JABAY

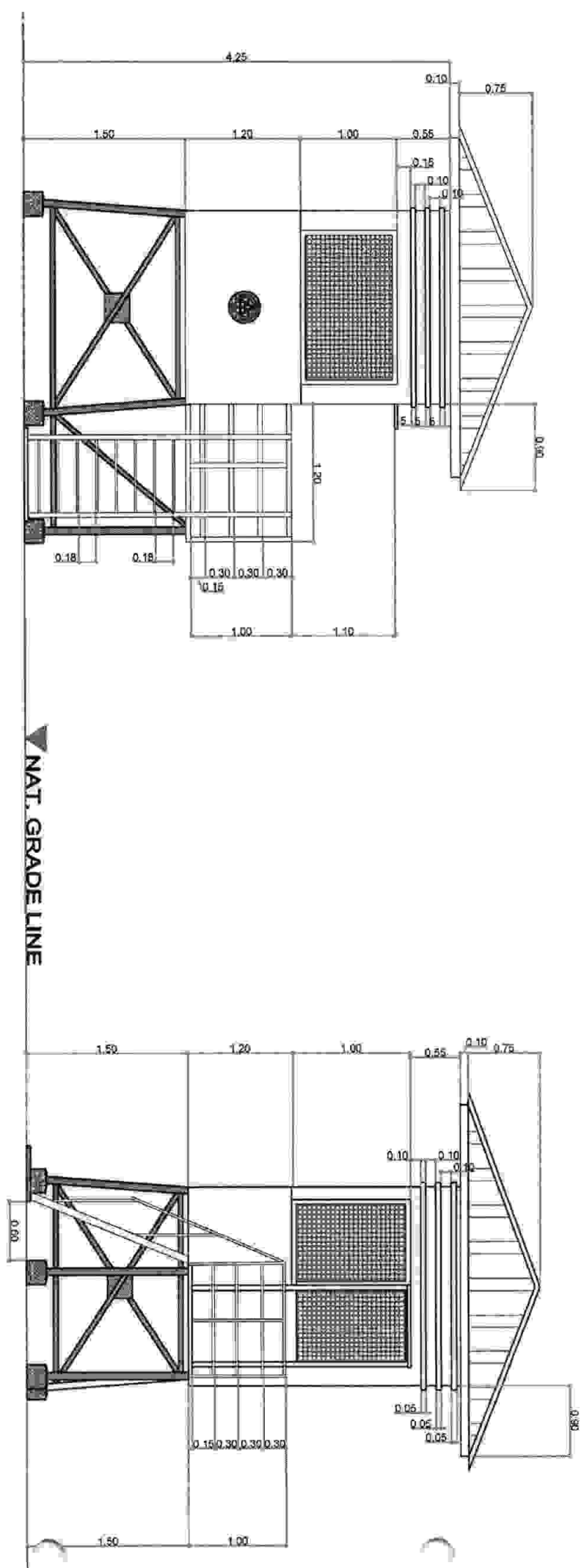
RECOMMENDING
APPROVAL:
ATTY. E. L. RAMIREZ

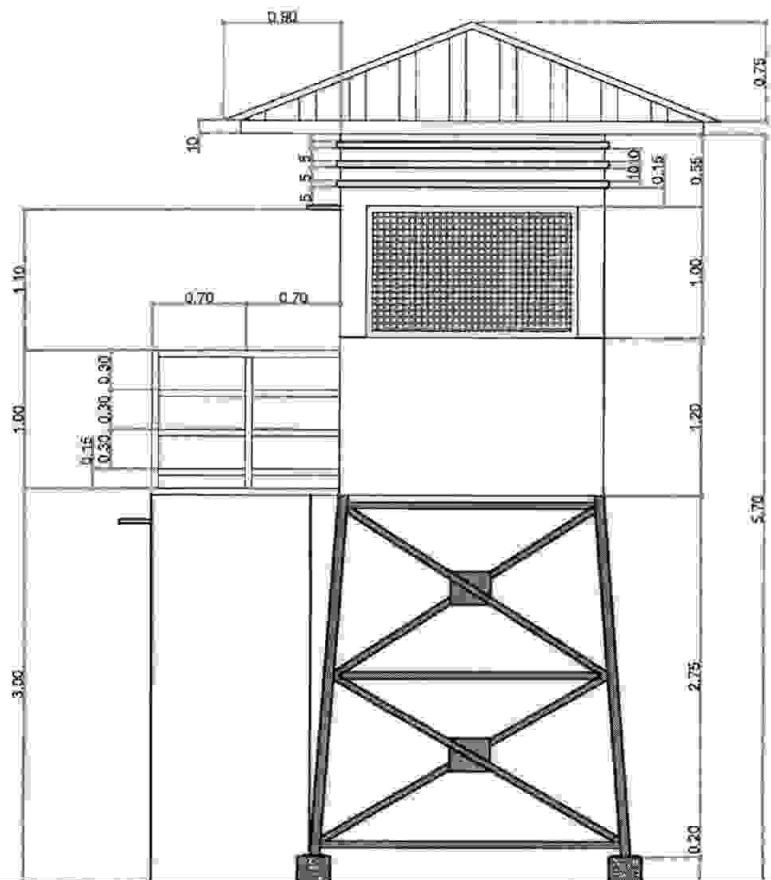
APPROVED BY:
E. A. VELOSO JR

SHEET NO.
6/8
17

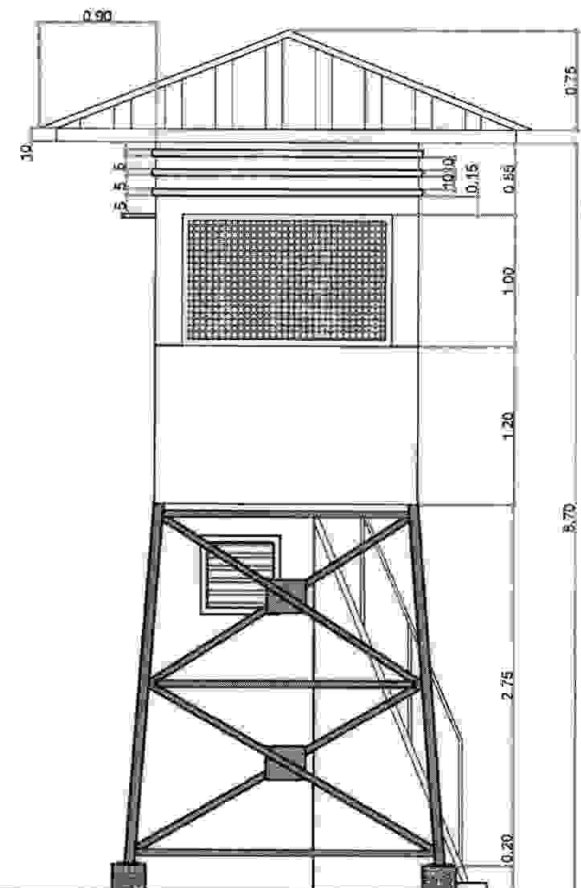
GUARD TOWER UNIT NO. 4 FRONT ELEVATION
Scale 1:100 mls.

GUARD TOWER UNIT NO. 4 LEFT ELEVATION
Scale 1:100 mls.





▼ NAT. GRADE LINE



GUARD TOWER UNITS NO. 1,2 & 3 REAR ELEVATION

Scale

1:100 mm



GUARD TOWER UNITS NO. 1,2 & 3 RIGHT ELEVATION

Scale

1:100 mm



NATIONAL POWER CORPORATION

**MINDANAO GENERATION
AGUS 6/7 HEPC**

BRGY. MA. CRISTINA, PUERTAS ILIGAN CITY

PROJECT TITLE:

**CONSTN OF (4) UNITS GUARD
TOWERS W/ CCTV & SEC
EQPT @ AGUS-6 SURGE TANK
& DAM**

LOCATION: AGUS 6 HPP

PREPARED BY:

W. A. ALFECHE

PLANT O/M MGR. MANAGER AGUS 6 HPP

CHECKED & REVIEWED BY:

M. B. JABAY

PLANT MANAGER, AGUS 6/7 HPP

RECOMMENDING
APPROVAL:

ATTY. E. L. RAMIREZ

PLANT MANAGER - AGUS 6/7 HPP

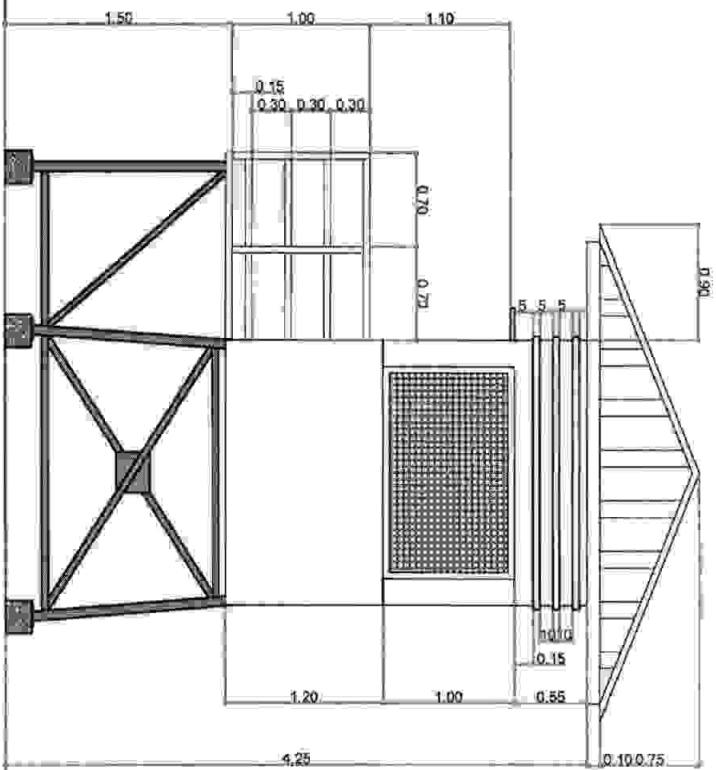
APPROVED BY:

E. A. VELOSO JR.

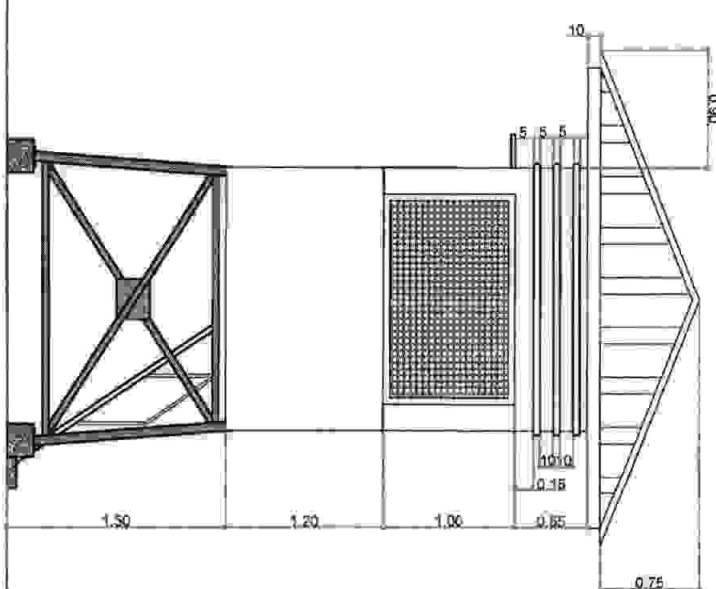
VICE-PRESIDENT MINDANAO GENERATION

SHEET NO:

**8/A
17**



NAT. GRADE LINE



GUARD TOWER UNIT NO. 4 REAR ELEVATION
Scale: 1:100 mls

GUARD TOWER UNIT NO. 4 RIGHT ELEVATION
Scale: 1:100 mls

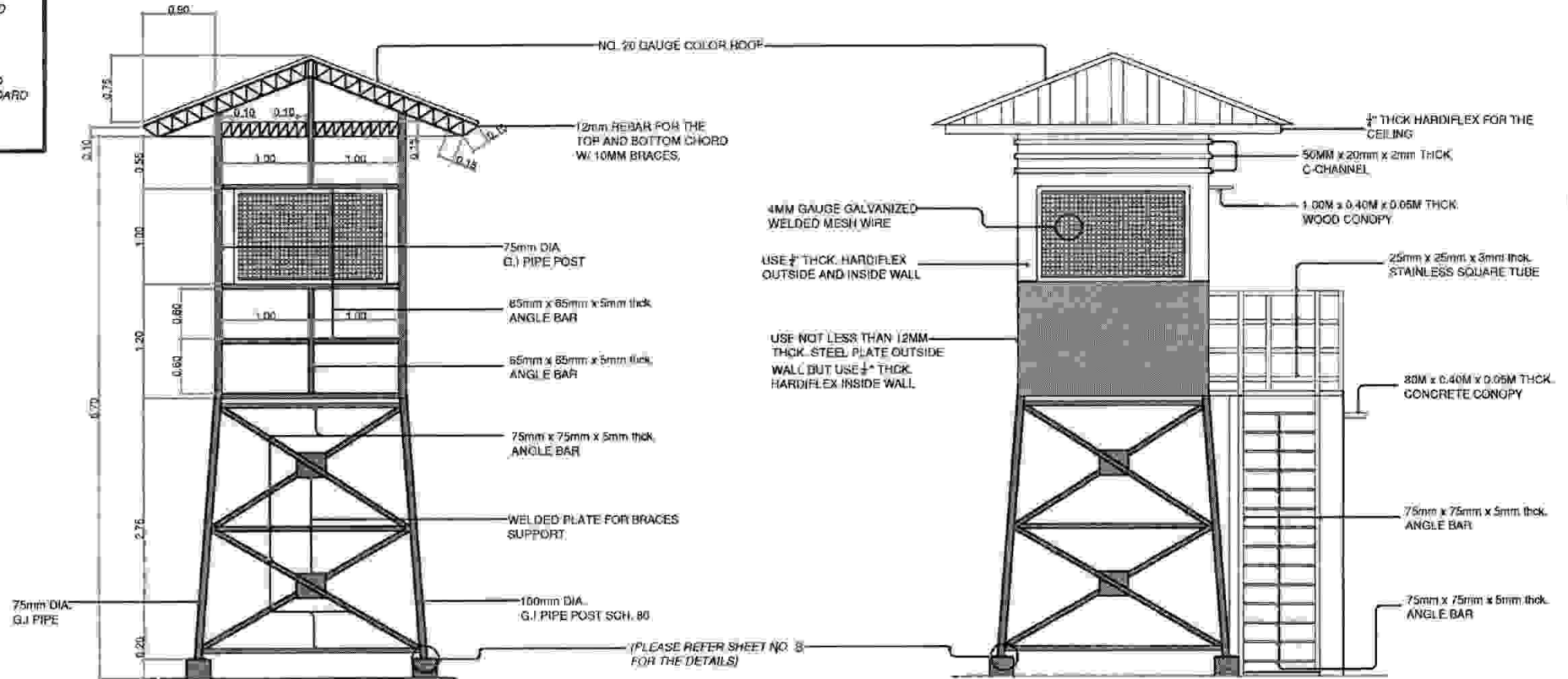


NATIONAL POWER CORPORATION
MINDANAO GENERATION
AGUS 6/7 HEPC
BRGY. MA. CRISTINA, PUERTAS LIGAN CITY

| PROJECT TITLE | PREPARED BY | CHECKED & REVIEWED BY | RECOMMENDING APPROVAL | APPROVED BY | SHEET NO. |
|--|---|--|--|--|-----------|
| CONSTR. OF (4) UNITS GUARD TOWERS W/ CCTV & SEC EQUIP. & AGUS-6 SURGE TANK & DAM | W. A. ALPECHE PLANT CON. DIV. MANAGER, AGUS 6 HEPC | M. B. JARAY PTSD MANAGER, AGUS 6 HEPC | ATTY. E. L. RAMIREZ PLANT MANAGER - AGUS 6 HEPC | E. A. VELOSO JR. VICE PRESIDENT - MINDANAO GENERATION | 6/8 17 |

NOTE: UPON INSTALLATION, THESE ARE THE CONNECTIONS MUST BE FOLLOWED.

1. STEEL TO STEEL OR METAL TO STEEL CONNECTIONS MUST BE WELDED (FOLLOW STANDARD PROCEDURES AND MATERIALS AS SPECIFIED).
2. STEEL TO CONCRETE MUST BE BOLTED (FOLLOW STANDARD PROCEDURES AND USE STANDARD MATERIALS AS SPECIFIED).
3. WOOD TO METAL MUST USED BLIND REVIT (FOLLOW STANDARD PROCEDURES AND USE STANDARD MATERIALS AS SPECIFIED).



MATERIALS SPECIFICATION

Scale: 1:100 mts.



NATIONAL POWER CORPORATION

**MINDANAO GENERATION
AGUS 6/7 HEPG**

ENGR. MA. CRISTINA, FUENTES ILIGAN CITY

PROJECT TITLE:

**CONSTN OF (4) UNITS GUARD
TOWERS W/ CCTV & SEC
EQPT @ AGUS-6 SURGE TANK
& DAM**

LOCATION: AGUS-6 HPG

PREPARED BY:

W. A. ALFECHE

PLANT OPM DIV. MANAGER, AGUS-6 HPG

CHECKED & REVIEWED BY:

M. B. JABAY

PTSD MANAGER, AGUS-6 HPG

**RECOMMENDING
APPROVAL:**

ATTY. E. L. RAMIREZ

PLANT MANAGER - AGUS 6/7 HPG

APPROVED BY:

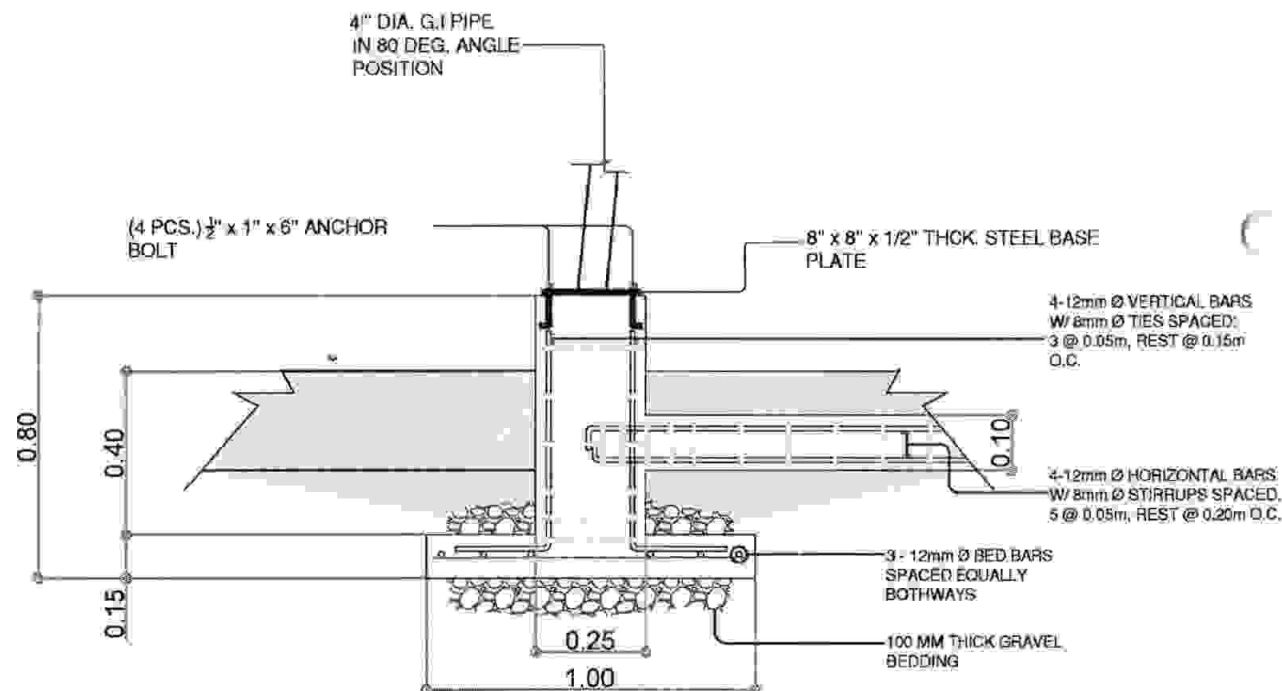
E. A. VELOSO JR

VICE-PRESIDENT MINDANAO GENERATION

SHEET NO:

**7
17**

GUARDHOUSE UNIT NO. 4 WILL BE LOCATED TOPMOST PART OF AGUS 6 HPP DAM. SINCE EXCAVATION IS NOT ALLOWED THE STEEL POST MUST BE BOLTED TO A (0.20m x 0.20m x 0.40m) HIGH PEDESTAL CONCRETE AND MUST BE BUILT IN STANDARD MIXTURE CLASS "A" RATIO & PROPORTION. THE DETAILS OF ANCHOR BOLT IS THE SAME WITH UNITS 1-3.



1:100MTS



**MINDANAO GENERATION
AGUS 6/7 HEPC**

**CONSTN OF (4) UNITS GUARD
TOWERS W/ CCTV & SEC
EQPT @ AGUS-6 SURGE TANK
& DAM**

W. A. ALFECHE

M. B. JABAY

ATTY. E. L. RAMIREZ

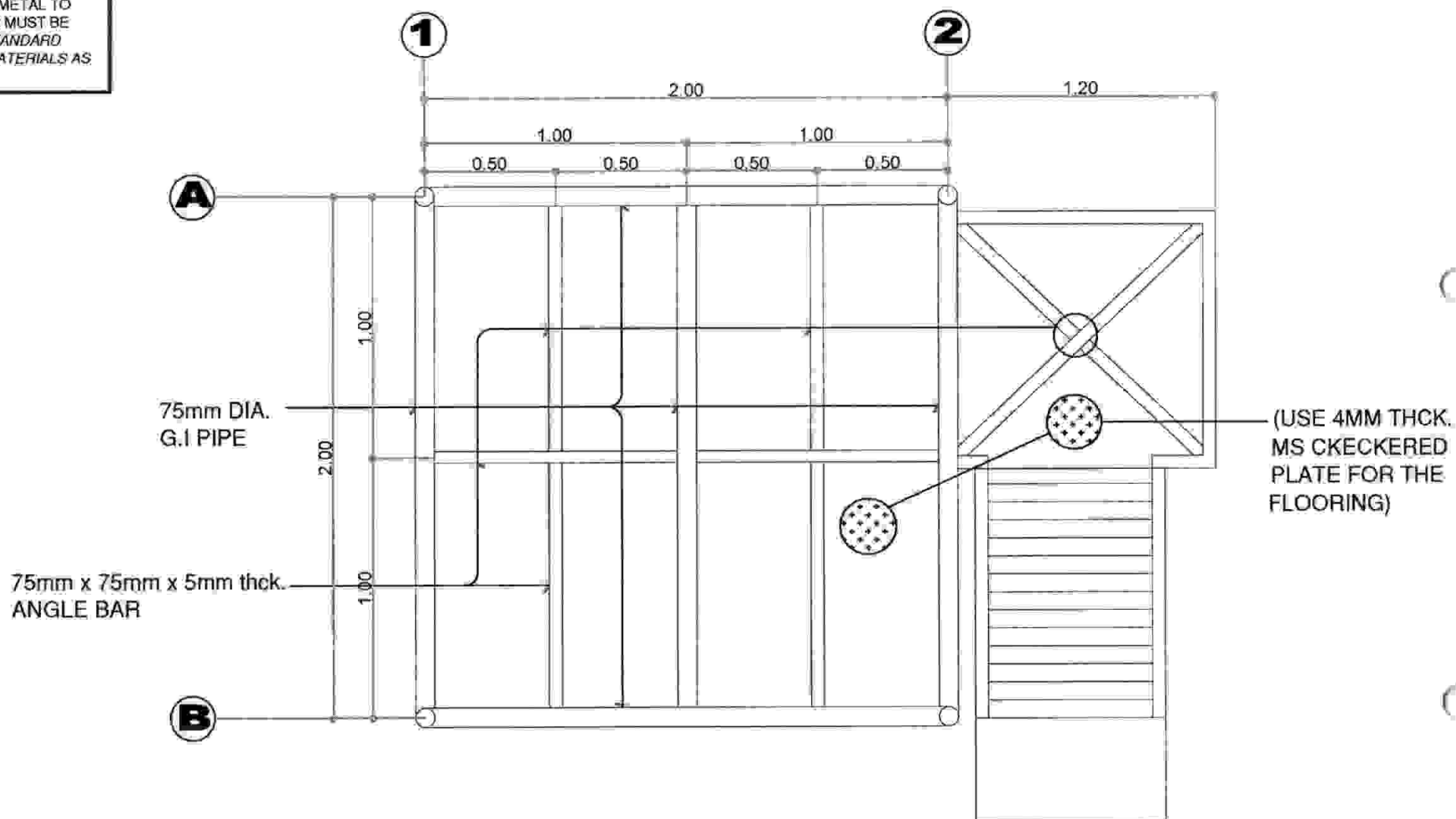
E. A. VELOSO JR.

VICE PRESIDENT MINDANAO GENERATION

WHILE NOW

NOTE:

-STEEL TO STEEL OR METAL TO STEEL CONNECTIONS MUST BE WELDED (FOLLOW STANDARD PROCEDURES AND MATERIALS AS SPECIFIED).



SECOND FLOOR FRAMING

Scale: 1:100 mts



NATIONAL POWER CORPORATION

**MINDANAO GENERATION
AGUS 6/7 HEP**

BRGY. MA. CRISTINA, FUENTES ILIGAN CITY

PROJECT TITLE:

**CONSTN OF (4) UNITS GUARD
TOWERS W/ CCTV & SEC
EQPT @ AGUS-6 SURGE TANK
& DAM**

LOCATION: AGUS 6 HEP.

PREPARED BY:

W. A. ALFECHE

PLANT DIV. MANAGER, AGUS 6 HEP

CHECKED & REVIEWED BY:

M. E. JABAY

PLSD. MANAGER, AGUS 6/7 HEP

RECOMMENDING
APPROVAL:

ATTY. E. L. RAMIREZ

PLANT MANAGER - AGUS 6/7 HEP

APPROVED BY:

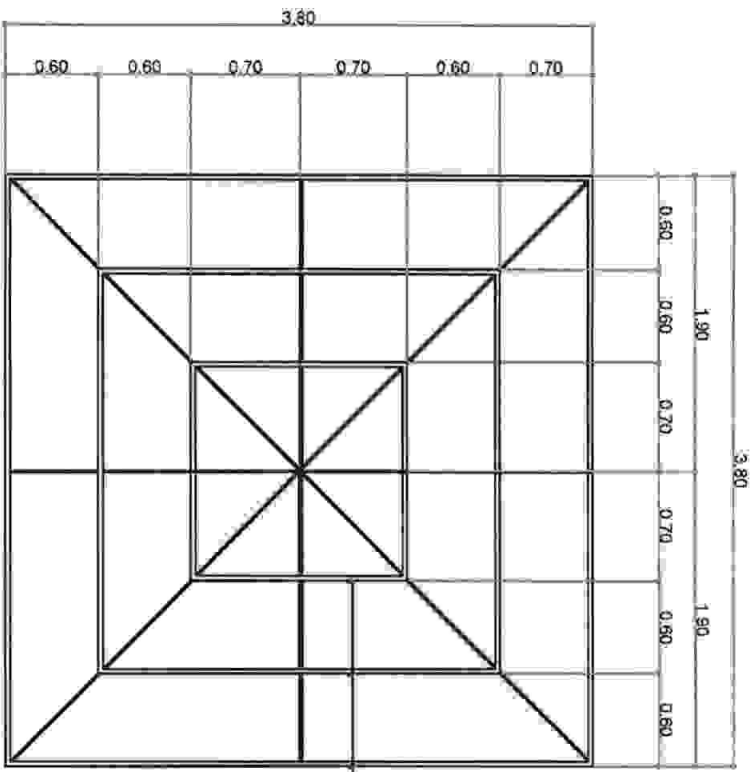
E. A. VELOSO JR.

VICE PRESIDENT MINDANAO GENERATION

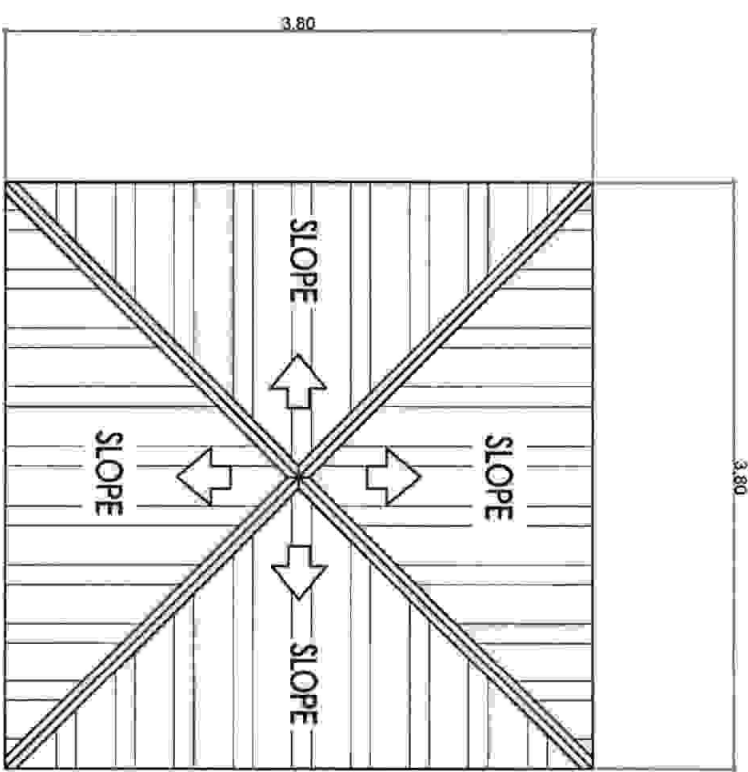
SHEET NO:

9
17

NOTE: PLEASE REFER SHEET NO. 7&14 FOR THE ROOF & CEILING HEIGHT DETAILS



2" x 4" C-PURLINS



ROOF FRAMING PLAN
Scale: 1/16"=1'-0"



ROOF PLAN
Scale: 1/16"=1'-0"

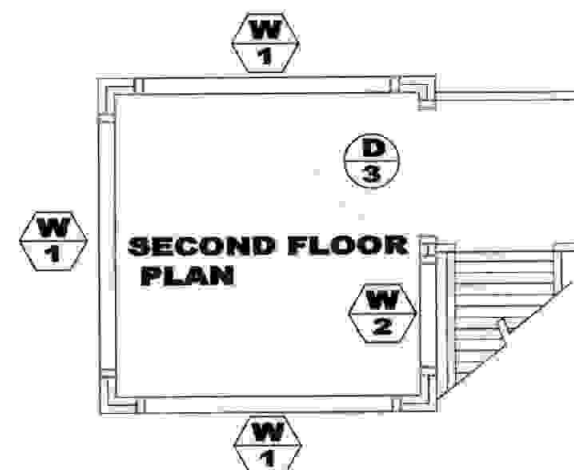
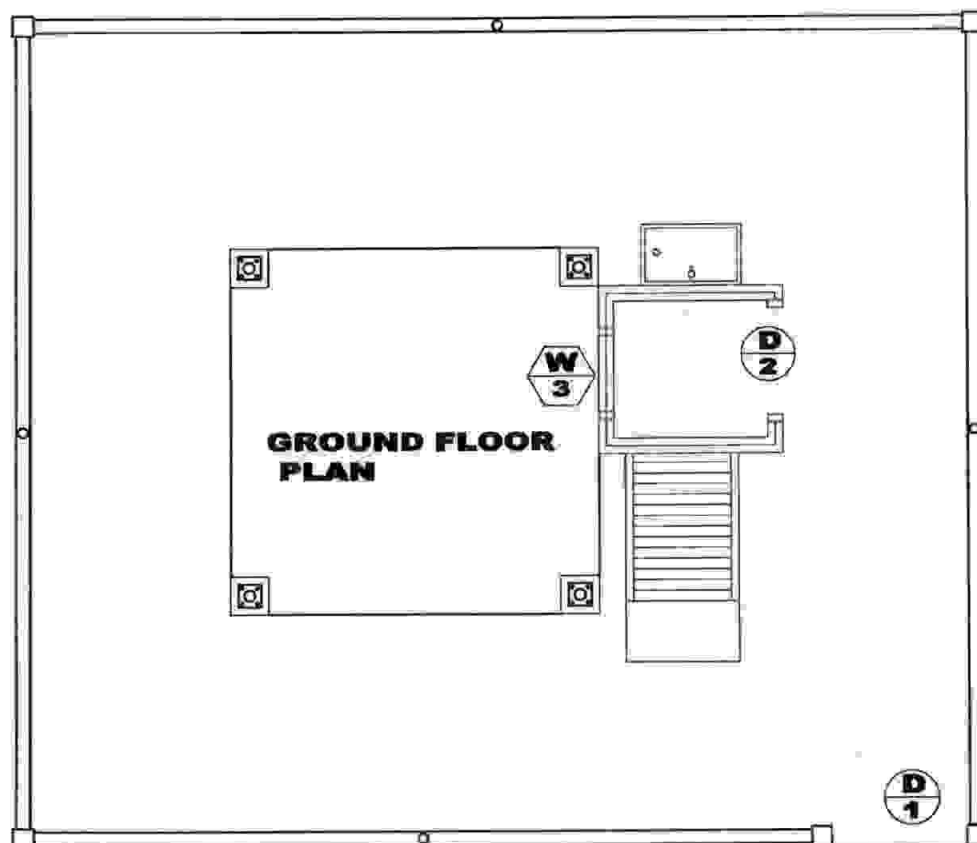


NATIONAL POWER CORPORATION
MINDANAO GENERATION
AGUS 6/7 NEPC
EROY, MA. CRISTINA, PUENTES ILIGAN CITY

| PROJECT TITLE | PREPARED BY | CHECKED & REVIEWED BY | RECOMMENDED APPROVAL | APPROVED BY | SHEET NO. |
|--|--|--|---|---|-----------|
| CONSTR. OF (4) UNITS GUARD TOWERS W/ CCTV & SEC EQUIP. @ AGUS-6 SURGE TANK & DAM | W. A. ALFECHE PLANT CIV. ENGR. MANAGER, AGUS-6/PP | M. B. JARAY PTSL MANAGER, AGUS-6/PP | ATTY. E. L. RAMIREZ PLANT MANAGER, AGUS-6/PP | E. A. VELOSO JR. VICE PRESIDENT, MINDANAO GENERATION | 10 17 |

LEGEND:

-  -DOOR
 -WINDOW

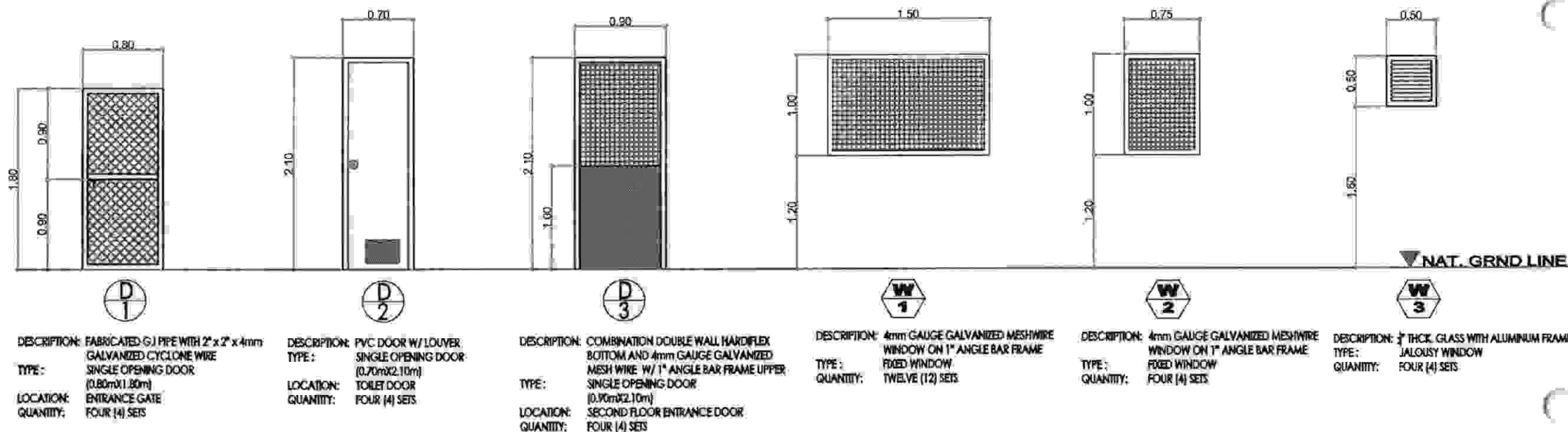


SCHEDULE OF DOORS AND WINDOWS

Scale:

NTS

|  | NATIONAL POWER CORPORATION MINDANAO GENERATION AGUS 6/7 HEPC BRGY. S.A. CRISTINA, FUENTES ILIGAN CITY | PROJECT TITLE: CONSTN OF (4) UNITS GUARD TOWERS W/ CCTV & SEC EQPT @ AGUS-6 SURGE TANK & DAM LOCATION: AGUS 6 HPP | PREPARED BY: W. A. ALFECHE <small>PLANT O&M DIV. MANAGER AGUS 6 HPP</small> | CHECKED & REVIEWED BY: M. S. JABAY <small>PTSD MANAGER AGUS 6/7 HPP</small> | RECOMMENDING APPROVALS: ATTY. E. L. RAMIREZ <small>PLANT MANAGER - AGUS 6/7 HPP</small> | APPROVED BY: E. A. VELOSO JR. <small>VICE-PRESIDENT MINDANAO GENERATION</small> | SHEET NO.: <div style="border: 1px solid black; border-radius: 50%; width: 30px; height: 30px; display: flex; align-items: center; justify-content: center;"> <div style="writing-mode: vertical-rl; transform: rotate(180deg);">11</div> <div>17</div> </div> |
|--|--|--|---|---|---|---|--|
|--|--|--|---|---|---|---|--|



SCHEDULE OF DOORS AND WINDOWS DETAILS
Scale: 1:100 mts.

|  | NATIONAL POWER CORPORATION MINDANAO GENERATION AGUS 6/7 HEPG BRGY. MA. CRISTINA, FUENTES ILIGAN CITY | PROJECT TITLE CONSTRN OF (4) UNITS GUARD TOWERS W/ CCTV & SEC EQPT @ AGUS-6 SURGE TANK & DAM LOCATION: AGUS 6 HEPG | PREPARED BY: W. A. ALFECHE <small>PLANT OIM DIV. MANAGER, AGUS 6 HEPG</small> | CHECKED & REVIEWED BY: M. S. JABAY <small>PTSD MANAGER, AGUS 6/7 HEPG</small> | RECOMMENDING APPROVAL: ATTY. E. L. RAMIREZ <small>PLANT MANAGER, AGUS 6/7 HEPG</small> | APPROVED BY: E. A. VELOSO JR. <small>VICE-PRESIDENT, MINDANAO GENERATION</small> | SHEET NO: 12 17 |
|--|---|---|---|---|--|--|--|
|--|---|---|---|---|--|--|--|

GUARD TOWER 1

| CIRCUIT NO. | DESCRIPTION OF LOADS | NO. OF OUTLETS | VOLTS (V) | WATTS (A) | PROTECTION PER CIRCUIT (A) | SIZE OF WIRES AND CONDUIT |
|-------------|----------------------|----------------|-----------|-----------|----------------------------|---|
| 1 | LIGHTING LOAD | 2 | 220 | 200 | 15 | 2-2.0 mm ² THW CU. WIRE IN 1/2" Ø C. |
| 2 | CONVENIENCE OUTLET | 2 | 220 | 360 | 30 | 2-3.5 mm ² THW CU. WIRE IN 1/2" Ø C. |
| 3 | FLOOD LAMPS | 4 | 220 | 1000 | 30 | 2-3.5 mm ² THW CU. WIRE IN 1/2" Ø C. |
| TOTAL | | 8 | 220 | 1560 | 60 | 2-5.5 mm ² THW CU. WIRE IN 1/2" Ø C. |

GUARD TOWER 2

| CIRCUIT NO. | DESCRIPTION OF LOADS | NO. OF OUTLETS | VOLTS (V) | WATTS (A) | PROTECTION PER CIRCUIT (A) | SIZE OF WIRES AND CONDUIT |
|-------------|----------------------|----------------|-----------|-----------|----------------------------|---|
| 1 | LIGHTING LOAD | 2 | 220 | 200 | 15 | 2-2.0 mm ² THW CU. WIRE IN 1/2" Ø C. |
| 2 | CONVENIENCE OUTLET | 2 | 220 | 360 | 30 | 2-3.5 mm ² THW CU. WIRE IN 1/2" Ø C. |
| 3 | FLOOD LAMPS | 4 | 220 | 1000 | 30 | 2-3.5 mm ² THW CU. WIRE IN 1/2" Ø C. |
| TOTAL | | 8 | 220 | 1560 | 60 | 2-5.5 mm ² THW CU. WIRE IN 1/2" Ø C. |

GUARD TOWER 3

| CIRCUIT NO. | DESCRIPTION OF LOADS | NO. OF OUTLETS | VOLTS (V) | WATTS (A) | PROTECTION PER CIRCUIT (A) | SIZE OF WIRES AND CONDUIT |
|-------------|----------------------|----------------|-----------|-----------|----------------------------|---|
| 1 | LIGHTING LOAD | 2 | 220 | 200 | 15 | 2-2.0 mm ² THW CU. WIRE IN 1/2" Ø C. |
| 2 | CONVENIENCE OUTLET | 2 | 220 | 360 | 30 | 2-3.5 mm ² THW CU. WIRE IN 1/2" Ø C. |
| 3 | FLOOD LAMPS | 4 | 220 | 1000 | 30 | 2-3.5 mm ² THW CU. WIRE IN 1/2" Ø C. |
| TOTAL | | 8 | 220 | 1560 | 60 | 2-5.5 mm ² THW CU. WIRE IN 1/2" Ø C. |

GUARD TOWER 4

| CIRCUIT NO. | DESCRIPTION OF LOADS | NO. OF OUTLETS | VOLTS (V) | WATTS (A) | PROTECTION PER CIRCUIT (A) | SIZE OF WIRES AND CONDUIT |
|-------------|----------------------|----------------|-----------|-----------|----------------------------|---|
| 1 | LIGHTING LOAD | 2 | 220 | 200 | 15 | 2-2.0 mm ² THW CU. WIRE IN 1/2" Ø C. |
| 2 | CONVENIENCE OUTLET | 2 | 220 | 360 | 30 | 2-3.5 mm ² THW CU. WIRE IN 1/2" Ø C. |
| 3 | FLOOD LAMPS | 4 | 220 | 1000 | 30 | 2-3.5 mm ² THW CU. WIRE IN 1/2" Ø C. |
| TOTAL | | 8 | 220 | 1560 | 60 | 2-5.5 mm ² THW CU. WIRE IN 1/2" Ø C. |

SCHEDULE OF LOADS

Scale:

NDTS

NOTE:

1. Main line of each tower shall be terminated by the contractor to a source specified by the Agus 6&7 management.
2. The contractor shall install one (1) electric wall fan at each of the guard towers, with a specification of:

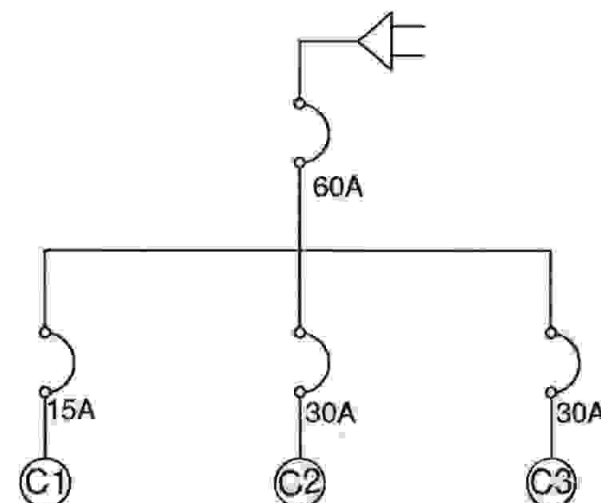
Fan Blade Size: Not lower than 16"
 Motor rating: Not lower than 70 W @ 220V-230V
 Speed Rating: 3 Speed

*ONE (1) SPARE FAN SHALL BE TURNED OVER TO AGUS 6&7 WAREHOUSE

3. The contractor shall install four (4) LED flood light at each of the guard tower, with a specification of:

Power rating: Not lower than 150W
 Weather Protection Rating: IP65 or EQUIVALENT
 No. LEDs: Not lower than 2
 Luminosity: 13500 → 14500 lm
 Color Temperature: 6500K
 Case Material: Aluminum or Metal Alloy

*FOUR (4) SPARE LED FLOOD LIGHT SHALL BE TURNED OVER TO AGUS 6 & 7 WAREHOUSE



TYPICAL SINGLE LINE DIAGRAM OF FOUR (4) GUARD TOWERS

Scale:

NDTS



NATIONAL POWER CORPORATION

MINDANAO GENERATION
 AGUS 6/7 HEPC

BOY. MA. CRISTINA, FUENTES ILLIGAN CITY

PROJECT TITLE:

CONSTRN OF (4) UNITS GUARD
 TOWERS W/ CCTV & SEC
 EQPT @ AGUS-6 SURGE TANK
 & DAM

LOCATION: AGUS 6 HEPC

PREPARED BY:

W. A. ALFECHE

PLANT O&M DIV. MANAGER, AGUS 6 HEPC

CHECKED & REVIEWED BY:

M. B. JABAY

PTSC MANAGER, AGUS 6/7 HEPC

RECOMMENDED
 APPROVAL:

ATTY. E. L. RAMIREZ

PLANT MANAGER - AGUS 6/7 HEPC

APPROVED BY:








E. A. VELOSO JR.

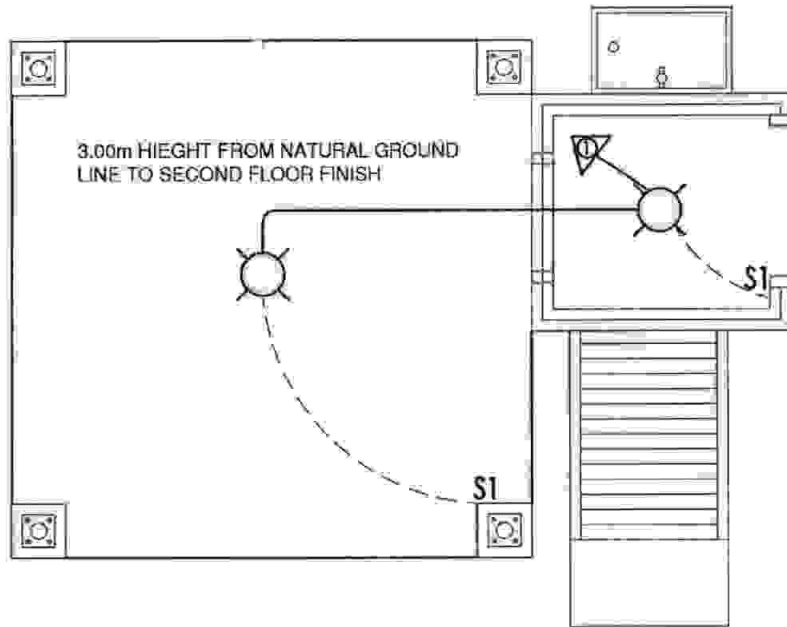
VICE-PRESIDENT MINDANAO GENERATION

SHEET NO:

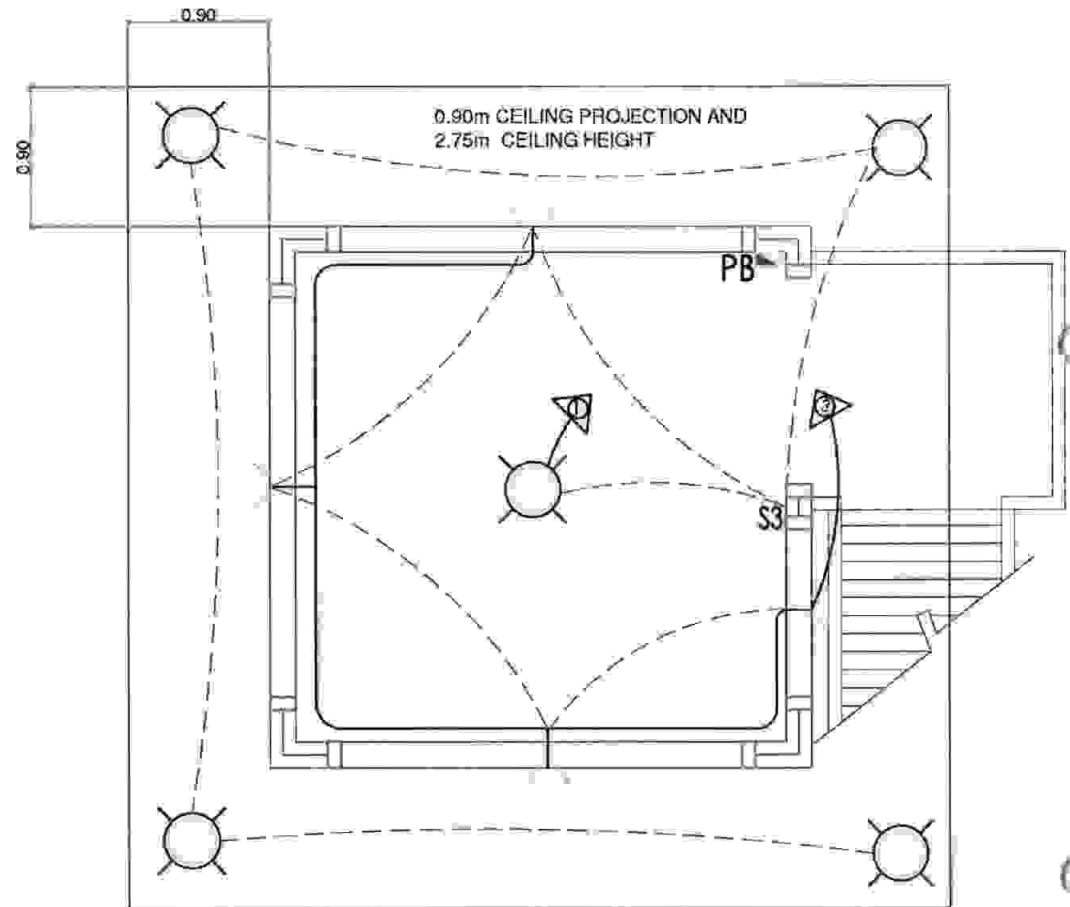
13
 17

LEGEND:

-  LIGHTING OUTLET
-  2-GANG SWITCH
-  PANEL BOARD
-  CIRCUIT HOME RUN
-  SWITCH LINE
-  LIGHT OUTLET LINE
-  150 WATTS LED FLOOD LIGHT



 **GROUND FLOOR PLAN**



 **SECOND FLOOR PLAN**

LIGHTING LAY-OUT

Scale:

NDTS



NATIONAL POWER CORPORATION

**MINDANAO GENERATION
AGUS 6/7 HEPC**

BRGY. MA. CRISTINA, FUENTES ILIGAN CITY

PROJECT TITLE

**CONSTN OF (4) UNITS GUARD
TOWERS W/ CCTV & SEC
EQPT @ AGUS-6 SURGE TANK
& DAM**

LOCATION: AGUS 6 HPP

PREPARED BY:

W. A. ALFECHE

PLANT DM DIV. MANAGER, AGUS 6 HPP

CHECKED & REVIEWED BY:

M. B. JABAY

FTSD MANAGER, AGUS 6/7 HPPC

**RECOMMENDING
APPROVAL:**

ATTY. E. L. RAMIREZ

PLANT MANAGER - AGUS 6/7 HPPC

APPROVED BY:

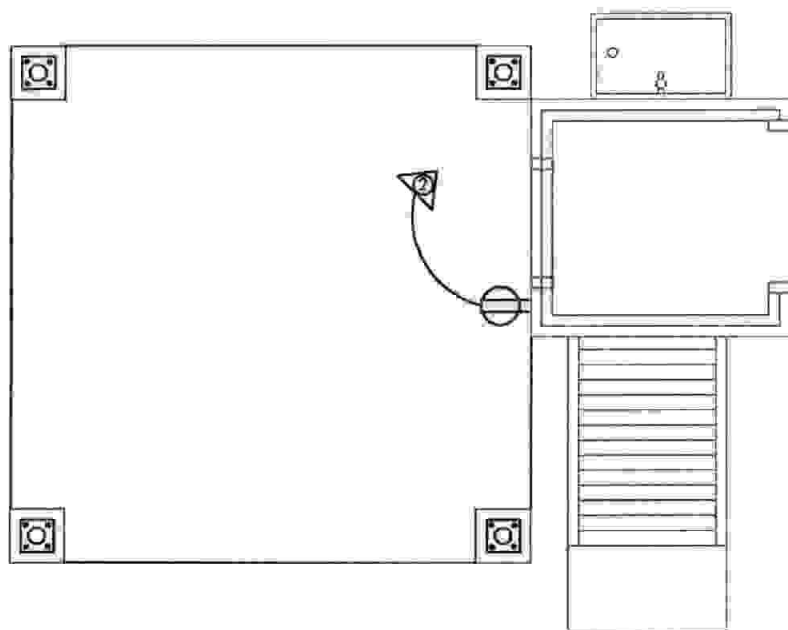
E. A VELOSO JR.

VICE-PRESIDENT, MINDANAO GENERATION

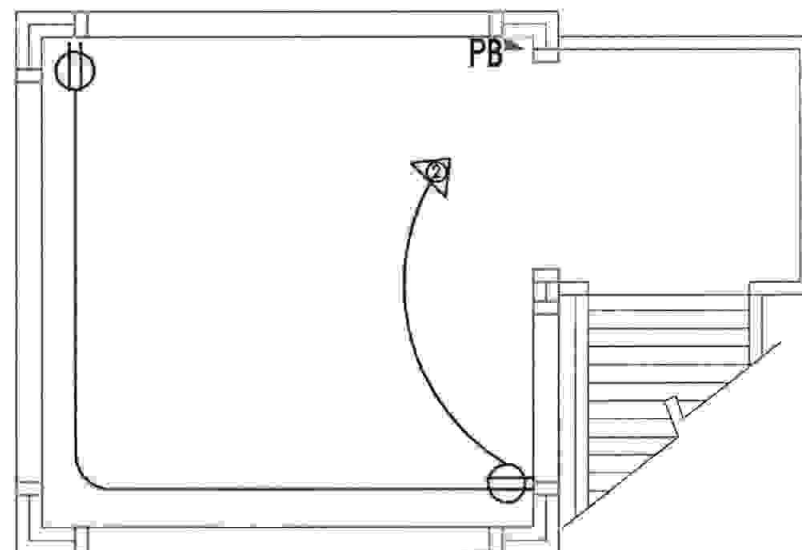
SHEET NO:

**14
17**

LEGEND:



 **GROUND FLOOR PLAN**
Scale: NDTs



 **SECOND FLOOR PLAN**
Scale: NDTs

 **OUTLET LAY-OUT**
Scale: NDTs



NATIONAL POWER CORPORATION
MINDANAO GENERATION
AGUS 6/7 HEPC
BRGY. MA. CRISTINA, FUENTES ILIGAN CITY

PROJECT TITLE:

**CONSTN OF (4) UNITS GUARD
TOWERS W/ CCTV & SEC
EQPT @ AGUS-6 SURGE TANK
& DAM**

LOCATION: AGUS 6 HPP

PREPARED BY:

W. A. ALFECHE

PLANT OM DIV. MANAGER AGUS 6 HPP

CHECKED & REVIEWED BY:

M. B. JABAY

PTSD MANAGER AGUS 6/7 HPP

**RECOMMENDING
APPROVAL:**

ATTY. E. L. RAMIREZ

PLANT MANAGER AGUS 6/7 HPP

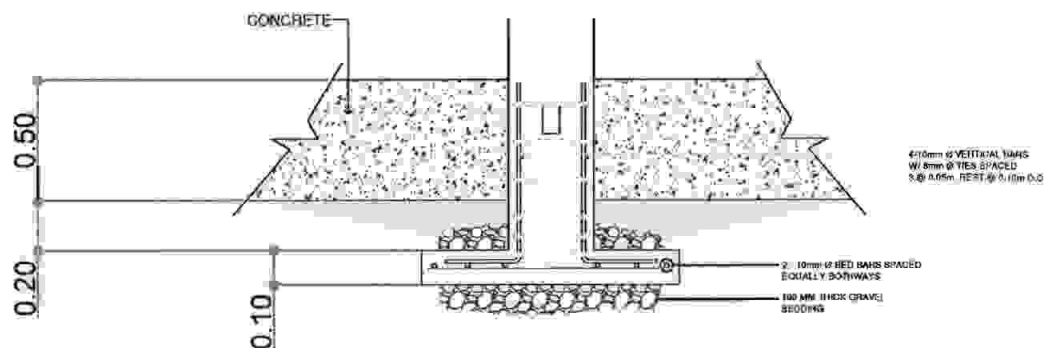
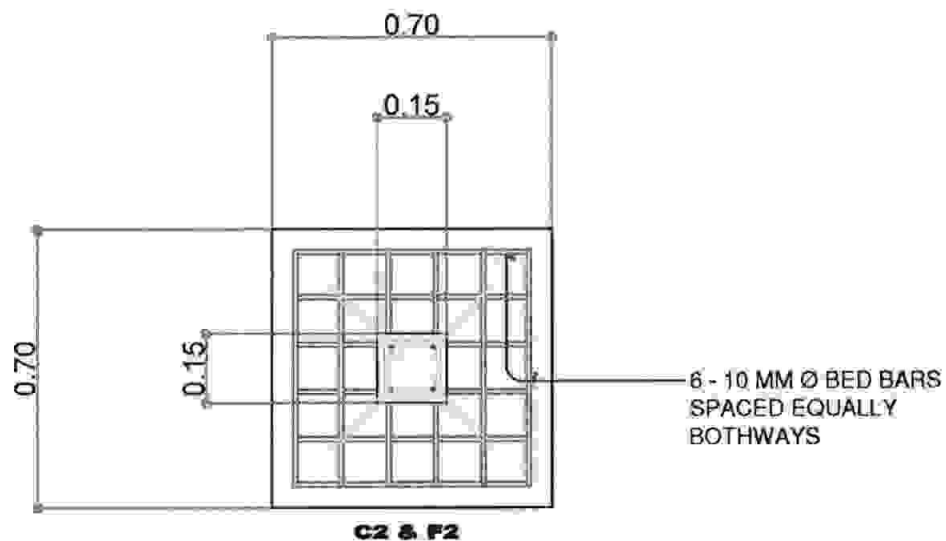
APPROVED BY:

E. A. VELOSO JR.

VICE-PRESIDENT MINDANAO GENERATION

SHEET NO:

1E
37



FOOTING-2 AND COLUMN-2 DETAILS



SCALE:

1:100MTS



NATIONAL POWER CORPORATION

**MINDANAO GENERATION
AGUS 6/7 HEPC**

BRGY. MA. CRISTINA, FUENTES ILOAN CITY

PROJECT TITLE:

**CONSTN OF (4) UNITS GUARD
TOWERS W/ CCTV & SEC
EQPT @ AGUS-6 SURGE TANK
& DAM**

LOCATION: AGUS 6 HPP

PREPARED BY:

W. A. ALFECHÉ

PLANT OM/DIV. MANAGER, AGUS 6 HPP

CHECKED & REVIEWED BY:

M. E. JABAY

PTSC MANAGER, AGUS 6/7 HPPC

**RECOMMENDING
APPROVAL:**

ATTY. E. L. RAMIREZ

PLANT MANAGER, AGUS 6/7 HPPC

APPROVED BY:

E. A. VELOSO JR.

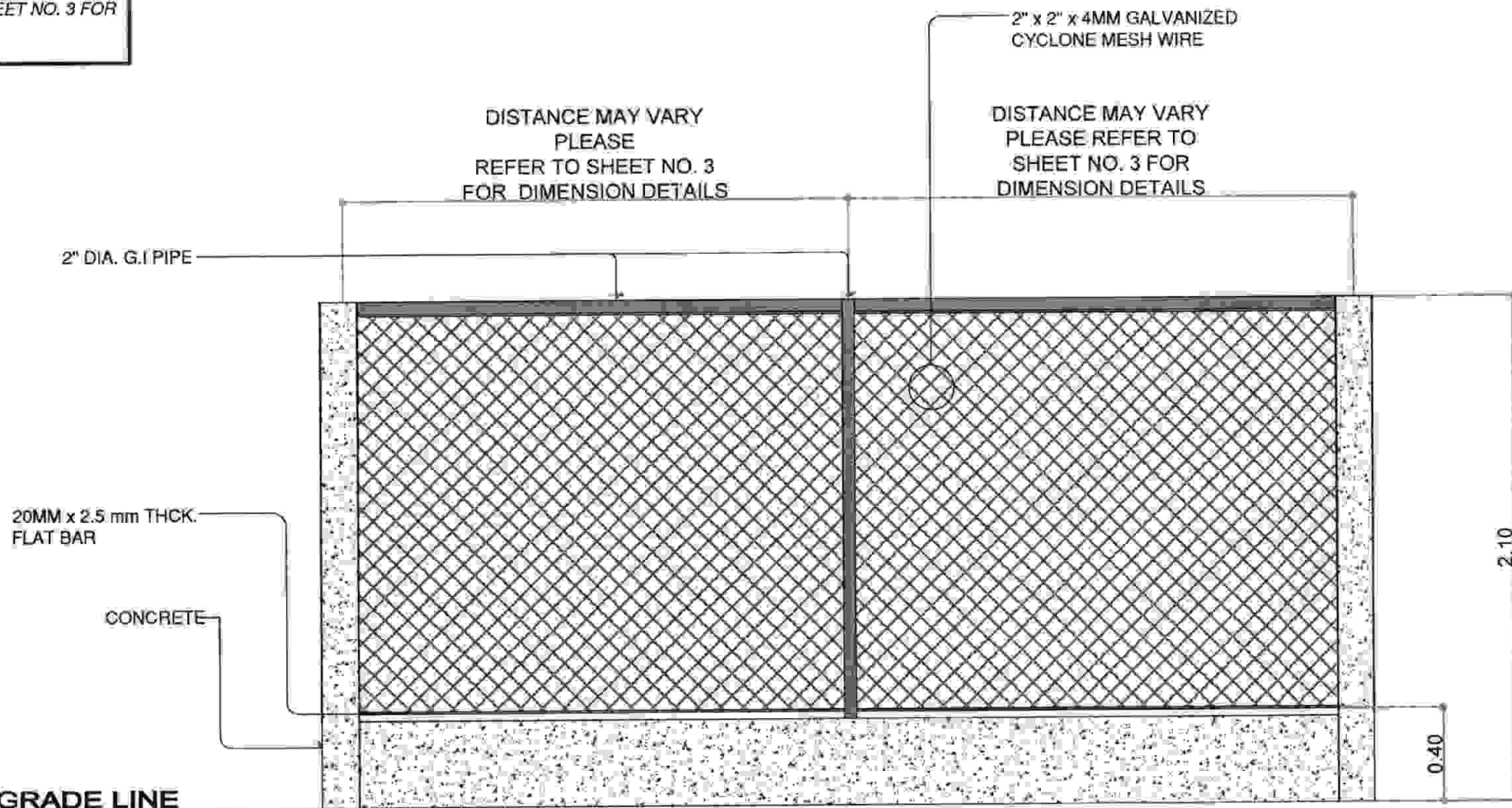
VICE-PRESIDENT MINDANAO GENERATION

SHEET NO.:

**16
17**

NOTE:

PLEASE REFER SHEET NO. 3 FOR
THE FENCE FLOOR PLAN.



TYPICAL FENCE DETAILS FOR THREE (3) UNITS GUARD TOWER

SCALE

1:100MTS



NATIONAL POWER CORPORATION

**MINDANAO GENERATION
AGUS 6/7 HEPC**

BROY. MA. CRISTINA, FUENTES ILIGAN CITY

PROJECT TITLE:

**CONSTRN OF (4) UNITS GUARD
TOWERS W/ CCTV & SEC
EQPT @ AGUS-6 SURGE TANK
& DAM**

LOCATION: AGUS 6 HPP

PREPARED BY:

W. A. ALFECHE

PLANT DATA DIV. MANAGER, AGUS 6 HPP

CHECKED & REVIEWED BY:

M. B. JABAY

PTSD MANAGER, AGUS 6/7 HPPC

RECOMMENDING
APPROVAL:

ATTY. E. L. RAMIREZ

PLANT MANAGER - AGUS 6/7 HPPC

APPROVED BY:

E. A. VELOSO JR.

VICEPRESIDENT MINDANAO GENERATION

SHEET NO:

**17
17**

Section VIII. Bill of Quantities

BID DOCUMENTS

NAME OF PROJECT: CONSTN OF 4 UNITS GUARD TOWERS
W/ CCTV & SEC EOPT @ A6 S-TANK & DAM
PR NO./REF NO: MG-A7M22-080 / INFRA2022-AG7-024

(Name of Project) CONSTN OF 4 UNITS GUARD TOWERS W/ CCTV & SEC EOPT
@ A6 S-TANK & DAM

SECTION VIII - BIDDING FORMS

(PR #) _____

BILL OF QUANTITIES

| Item No. | Description of Work or Materials | Unit | Estimated Quantity | Unit Price in Pesos (Words and Figures) | Total Amount |
|----------|---|------|--------------------|---|--------------|
| 1 | PRELIMINARY 1.1. SITE CLEARING & REMOVAL OF EXISTING STRUCTURES | SQM | 1.00 | _____ (P) _____ (P) _____ | _____ |
| | 1.2. DEMOLITION | SQM | 1.00 | _____ (P) _____ (P) _____ | _____ |
| 2 | FOUNDATION 2.1. FOUNDATION | CUM | 1.00 | _____ (P) _____ (P) _____ | _____ |
| 3 | STEELWORK 3.1. STEELWORK | KGS | 12,345.70 | _____ (P) _____ (P) _____ | _____ |
| 4 | FORMWORK & CONCRETE WORK 4.1. FORMWORK & CONCRETE WORK | CUM | 1.00 | _____ (P) _____ (P) _____ | _____ |
| 5 | ELECTRICAL WORK & CABLE INSTALLATION 5.1. ELECTRICAL WORK & CABLE INSTALLATION | LM | 1.00 | _____ (P) _____ (P) _____ | _____ |

BID DOCUMENTS

NAME OF PROJECT CONSTN OF 4 UNITS GUARD TOWERS
W/ CCTV & SEC EQPT @ A6 S-TANK & DAM
PR NO/REF NO MG-A7M22-0807/INFRA2022-AG7-024

ROOFING WORKS & INSTALLATION OF FINISHING MATERIALS

8C M

57 70

EndP

1. 44

Name of Firm

Name and Signature of Authorized Representative: _____

Designation

Section IX. Checklist of Technical and Financial Documents

Checklist of Technical and Financial Documents

I. TECHNICAL COMPONENT ENVELOPE [Submit in three (3) copies- one (1) marked Original with the understanding that the Pass/Fail evaluation will be based only on the copy marked "Original"]

Class "A" Documents

Legal Documents

- ☒ (a) Valid and updated PhilGEPS Registration Certificate (Platinum Membership) (all pages) in accordance with Section 8.5.2 of the IRR; or

Technical Documents

- ☒ (b) Statement of the prospective bidder of all its ongoing government and private contracts, including contracts awarded but not yet started, if any, whether similar or not similar in nature and complexity to the contract to be bid, using NPC-MinGen Standard Form No. NPCMGNSF-INFR-01; and
- ☒ (c) Statement of the bidder's Single Largest Completed Contract (SLCC) similar to the contract to be bid, except under conditions provided under the rules, using NPC-MinGen Standard Form No. NPCMGNSF-INFR-02 supported with the following documents:
- Contract and/or Notice to Proceed;
 - For project completed less than one year from the scheduled date of bid opening, submit Certificate of Completion;
 - For project completed at least one year from the scheduled date of bid opening, submit Owner's Certificate of Final Acceptance issued by the project owner other than the contractor, or a final rating of at least Satisfactory in the Constructor's Performance Evaluation System (CPES);
 - In case of contracts with the private sector, an equivalent document (Ex. Official receipt) shall be submitted.
- and
- ☒ (d) Special PCAB License in case of Joint Ventures; and registration for the type and cost of the contract to be bid; and
- ☒ (e) Original copy of Bid Security. If in the form of a Surety Bond, using NPC-MinGen Standard Form No. NPCMGNSF-INFR-03a, submit also a certification issued by the Insurance Commission; or Original copy of Notarized Bid Securing Declaration using NPC-MinGen Standard Form No. NPCMGNSF-INFR-03b; and
- ☒ (f) Project Requirements, which shall include the following:

SECTION IX- CHECKLIST OF TECHNICAL &
FINANCIAL DOCUMENTS

PR NO./REF NO. MG-A7M22-080 INFR-12/123-ACT-024

- a. Organizational chart for the contract to be bid *using NPC-MinGen Standard Form No. NPCMGNSF-INFR-04*;
- ☒ b. List of contractor's key personnel (e.g., Project Manager, Project Engineers, Materials Engineers, and Foremen), to be assigned to the contract to be bid, with their complete qualification and experience data, using NPC-MinGen Standard Form No. NPCMGNSF-INFR-05, 6a, 6b & 07;
- ☒ c. List of contractor's major equipment units, which are owned, leased, and/or under purchase agreements, supported by proof of ownership or certification of availability of equipment from the equipment lessor/vendor for the duration of the project, as the case may be, using NPC-MinGen Standard Form No. NPCMGNSF-INFR-08 and its supporting documents; and
- ☒ (g) Original duly signed Omnibus Sworn Statement (OSS), using any of the following NPC-MinGen Standard Forms No.:
NPCMGNSF-INFR-09a – for Sole Proprietorship;
or
NPCMGNSF-INFR-09b – for Partnership/Cooperative/Corporation/
Joint Venture with the following supporting documents:
and if applicable, Original Notarized Secretary's Certificate in case of a corporation, partnership, or cooperative; or Original Special Power of Attorney of all members of the joint venture giving full power and authority to its officer to sign the OSS and do acts to represent the Bidder.

Financial Documents

- ☒ (h) The prospective bidder's computation of Net Financial Contracting Capacity (NFCC) using NPC-MinGen Standard Form No. NPCMGNSF-INFR-10.

Class "B" Documents

- ☒ (i) If applicable, duly signed joint venture agreement (JVA) in accordance with RA No. 4566 and its IRR in case the joint venture is already in existence, using NPC-MinGen Standard Form No. *NPCMGNSF-INFR-11*;
or
 duly notarized statements from all the potential joint venture partners stating that they will enter into and abide by the provisions of the JVA in the instance that the bid is successful.

II. FINANCIAL COMPONENT ENVELOPE/Submit in three (3) copies- one (1) marked Original with the understanding that the Pass/Fail evaluation will be based only on the copy marked "Original"

- ☒ (j) Original of duly signed (each and every page) and accomplished Financial Bid Form, using NPC-MinGen Standard Form No. NPCMGNSF-INFR-12;
and

SECTION IX- CHECKLIST OF TECHNICAL &
FINANCIAL DOCUMENTS

PR NO / REF NO: MG-A7M22-080/ INFR-2022-MGF-024

Other documentary requirements under RA No. 9184

- ☒ (k) Original of duly signed (each and every page) Bid Prices in the Bill of Quantities, using given form in Section VIII; and
- ☒ (l) Duly signed (each and every page) and accomplished Detailed Estimates Form using NPC-MinGen Standard Form No. NPCMGNSF-INFR-13, including a summary sheet indicating the unit prices of construction materials, labor rates, and equipment rentals used in coming up with the Bid using NPC form NPCMGNSF-INFR-14; and
- ☒ (m) Cash Flow by Quarter or Month, as applicable (duly signed each and every page)

STANDARD BIDDING FORMS

NPC-MINDANAO GENERATION

- NPCMGNSF-INFR-01 - List of all Ongoing Government & Private Construction Contracts Including Contracts Awarded but not yet Started
- NPCMGNSF-INFR-02 - Statement of the Bidder's Single Largest Completed Contract (SLCC) similar to the contract to be bid
- NPCMGNSF-INFR-03a - Form of Bid Security : Surety Bond
- NPCMGNSF-INFR-03b - Bid Securing Declaration Form
- NPCMGNSF-INFR-04 - Contractor's Organizational Chart for the Project
- NPCMGNSF-INFR-05 - List of Key Personnel Proposed to be Assigned to the Project
- NPCMGNSF-INFR-6a - Key Personnel's Certificate of Employment (Professional Personnel)
- NPCMGNSF-INFR-6b - Key Personnel's Certificate of Employment (Construction Safety and Health Practitioner)
- NPCMGNSF-INFR-07 - Key Personnel's Bio-Data
- NPCMGNSF-INFR-08 - List of Equipment, Owned or Leased and/or under Purchase Agreement, Pledged to the Proposed Project
- NPCMGNSF-INFR-09a - Omnibus Sworn Statement (Sole Proprietorship)
- NPCMGNSF-INFR-09b - Omnibus Sworn Statement (Partnership/ Cooperative/Corporation//Joint Venture)
- NPCMGNSF-INFR-10 - Computation of Net Financial Contracting Capacity (NFCC)
- NPCMGNSF-INFR-11 - Joint Venture Agreement
- NPCMGNSF-INFR-12 - Bid Form
- NPCMGNSF-INFR-13 - Detailed Cost Estimate Form
- NPCMGNSF-INFR-14 - Summary Sheets of Materials Prices, Labor Rates and Equipment Rental Rates

BID DOCUMENTS

NAME OF PROJECT : CONSTN OF 4 UNITS : GUARD TOWERS W/ CCTV &
SEC EQPT @ A6 S-TANK & DAM

SECTION IX- CHECKLIST OF TECHNICAL &
FINANCIAL DOCUMENTS

PR NO./REF NO : MG-A7M22-080/ INFR/2022-AG7-024

Standard Form Number : NPCMGNSF-INFR-01

List of All Ongoing Government and Private Construction Contracts Including

Business Name : _____
Business Address : _____

| Name of Contract/Location/ Project Cost | a. Owner's Name b. Address c. Telephone Nos. | Nature of Work | Contractor's Role | |
|--|--|----------------|-------------------|---|
| | | | Description | % |
| <u>Government</u> | | | | |
| | | | | |
| | | | | |
| | | | | |
| | | | | |
| | | | | |
| <u>Private</u> | | | | |
| | | | | |
| | | | | |
| | | | | |
| | | | | |

The bidder shall declare in this form all his on-going government and private contracts including contracts where the bidder (elt agreement other than his current joint venture where he is a partner. Non declaration will be a ground for disqualification of bid

Note: This statement shall be supported with Contract and/or Notice of Award (to be presented by the winning bidder)

Submitted by : _____
(Printed Name & Signature)

Designation : _____

Date : _____

BID DOCUMENTS

NAME OF PROJECT : CONSTN OF 4 UNITS GUARD TOWERS W/ CCTV &
SEC EQPT @ A6 S-TANK & DAM

SECTION IX- CHECKLIST OF TECHNICAL &
FINANCIAL DOCUMENTS

PR NO /REF NO: MG-A7M22-080- INFR.1022-A07-024

Standard Form Number : NPCMGNSF-INFR-02

The Statement of the Bidder's Single Largest Completed Contract (SLCC)

Business Name : _____
Business Address : _____

| Name of Contract | a. Owner's Name b. Address c. Telephone Nos. | Nature of Work | Contractor's Role | |
|------------------|--|----------------|-------------------|---|
| | | | Description | % |
| | | | | |

Note: The bidder must state only one (1) Single Largest Completed Contract (SLCC) similar to the contract to be supported with:

1. Contract and Notice to Proceed
2. Certificate of Completion (for project completed within the year), or Owner's Certificate of Final Acceptance (for project owner other than the contractor, or a final rating of at least Satisfactory in the Constructor's Report for the private sector, an equivalent document (Ex. Official Receipt) shall be accepted.

Submitted by : _____
(Printed Name & Signature)

Designation : _____
Date : _____

Standard Form No: NPCMGNSF-INFR-03a

FORM OF BID SECURITY (SURETY BOND)

BOND NO.: _____ DATE BOND EXECUTED: _____

By this bond, We (Name of Bidder) (hereinafter called "the Principal") and (Name of Surety) of (Name of Country of Surety), authorized to transact business in the Philippines (hereinafter called "the Employer") as Obligee, in the sum of [amount in words & figures as prescribed in the bidding documents], callable on demand, for the payment of which sum, well and truly to be made, we, the said Principal and Surety bind ourselves, our successors and assigns, jointly and severally, firmly by these presents.

SEALED with our seals and dated this _____ day of _____ 20____

WHEREAS, the Principal has submitted a written Bid to the Employer dated the _____ day of _____ 20____, for the _____ (hereinafter called "the Bid").

NOW THEREFORE, the conditions of this obligation are:

- 1) If the Bidder withdraws his Bid during the period of bid validity specified in the Bidding Documents; or
- 2) If the Bidder does not accept the correction of arithmetical errors of his bid price in accordance with the Instructions to Bidder; or
- 3) If the Bidder, having determined as the LCB, fails or refuses to submit the required tax clearance, latest income and business tax returns and PhilGEPS registration certificate within the prescribed period; or
- 4) If the bidder having been notified of the acceptance of his bid and award of contract to him by the Entity during the period of bid validity:
 - a) Fails or refuses to execute the Contract; or
 - b) Fails or refuses to submit the required valid JVA, if applicable; or
 - c) Fails or refuses to furnish the Performance Security in accordance with the Instruction to Bidders;

Then this obligation shall remain in full force and effect, otherwise it shall be null and void.

PROVIDED HOWEVER, that the Surety shall not be:

- a) Liable for a greater sum than the specified penalty of this bond, nor
- b) Liable for a greater sum than the difference between the amount of the said Principal's Bid and the amount of the Bid that is accepted by the Employer.

SECTION IX: CHECKLIST OF TECHNICAL &
FINANCIAL DOCUMENTS

PR NO./REF. NO: MG-A7M22-080/ INTR-2022-AC7-024

Standard Form No: NPCMGNSF-INFR-03a

Page 2 of 2

This Surety executing this instrument hereby agrees that its obligation shall be valid for 120 calendar days after the deadline for submission of Bids as such deadline is stated in the Instructions to Bidders or as it may be extended by the Employer, notice of which extension(s) to the Surety is hereby waived.

PRINCIPAL

SURETY

SIGNATURE(S)

SIGNATURE(S)

NAME(S) AND TITLE (S)

NAME(S)

SEAL

SEAL

Standard Form No: NPCMGNSF-INFR-03b

REPUBLIC OF THE PHILIPPINES)
CITY OF _____) S.S.**BID SECURING DECLARATION**
Project Identification No.: [Insert number]

To: [Insert name and address of the Procuring Entity]

I/We, the undersigned, declare that:

1. I/We understand that, according to your conditions, bids must be supported by a Bid Security, which may be in the form of a Bid Securing Declaration.
2. I/We accept that: (a) I/we will be automatically disqualified from bidding for any procurement contract with any procuring entity for a period of two (2) years upon receipt of your Blacklisting Order; and, (b) I/we will pay the applicable fine provided under Section 6 of the Guidelines on the Use of Bid Securing Declaration, within fifteen (15) days from receipt of the written demand by the procuring entity for the commission of acts resulting to the enforcement of the bid securing declaration under Sections 23.1(b), 34.2, 40.1 and 69.1, except 69.1(f), of the IRR of RA No. 9184; without prejudice to other legal action the government may undertake.
3. I/We understand that this Bid Securing Declaration shall cease to be valid on the following circumstances:
 - a. Upon expiration of the bid validity period, or any extension thereof pursuant to your request;
 - b. I am/we are declared ineligible or post-disqualified upon receipt of your notice to such effect, and (i) I/we failed to timely file a request for reconsideration or (ii) I/we filed a waiver to avail of said right; and
 - c. I am/we are declared the bidder with the Lowest Calculated Responsive Bid, and I/we have furnished the performance security and signed the Contract.

IN WITNESS WHEREOF, I/We have hereunto set my/our hand/s this ____ day of [month]
[year] at [place of execution].[Insert NAME OF BIDDER OR ITS AUTHORIZED
REPRESENTATIVE]

[Insert signatory's legal capacity]

Affiant

[Jurat]

[Format shall be based on the latest Rules on Notarial Practice]

BID DOCUMENTS
NAME OF PROJECT : CONSTN OF 4 UNITS, GUARD TOWERS W/ CCTV &
SEC EOP1 @ A6-S-TANK & DAM

PRJ NO./REF. NO. MG-AZM22-0807/INFR/AC/C2-A/CP/04

SECTION IX- CHECKLIST OF TECHNICAL &
FINANCIAL DOCUMENTS

CONTRACTOR'S ORGANIZATIONAL CHART FOR THE CONTRACT

Submit Copy of the Organizational Chart that the Contractor intends to use to execute the Contract if awarded to him. Indicate in the chart the names of the Project Manager, Project Engineer, Foreman and other Key Engineering Personnel.

Attach the required Proposed Organizational Chart for the Contract as stated above

NOTES:

1. This organization chart should represent the "Contractor's Organization" required for the Project, and not the organizational chart of the entire firm.
2. Each such nominated engineer/key personnel shall comply with and submit their complete qualification and experience data.
3. All these are required to be in the Technical Envelope of the Bidder.

BID DOCUMENTS

NAME OF PROJECT: CONSTN OF 4 UNITS GUARD TOWERS W/ CCTV &
SEC EOPT @ AG S-TANK & DAM

SECTION IX- CHECKLIST OF TECHNICAL &
FINANCIAL DOCUMENTS.

PR NO /REF NO: MG-A7M22-080/INFRAC2022-AL7-024

Standard Form Number : NPCMGNSF-INFR-05

LIST OF KEY PERSONNEL PROPOSED TO BE ASSIGNED TO THE CONTRACT
(Based on the Minimum Key Personnel Required in the Bidding Documents)

Business Name : _____
Business : _____

| | DESIGNATION | | | | |
|------------------------|-------------|--|--|--|--|
| | | | | | |
| 1. Name | | | | | |
| 2. Address | | | | | |
| 3. Date of Birth | | | | | |
| 4. Employed Since | | | | | |
| 5. Experience | | | | | |
| 6. Previous Employment | | | | | |
| 7. Education | | | | | |
| 8. PRC License | | | | | |

Required Attachments during Postqualification:

1. Valid PRC License of the (professional) personnel
2. Certificate of Training with accreditation from DOLE of the Construction Safety and Health Officer
3. TESDA Training Certificate (NC II) of Welder or Electrician, whichever is applicable
4. Copy of Diploma and/or Service Record/Certificate of Employment of previous and/or current employer of Foreman, Welder, Plumber or Electrician, whichever is applicable shall be submitted during post qualification by the winning bidder.

Submitted by: _____
(Printed name & Signature)

Designation: _____

Date: _____

One of the requirements from the bidder to be included in its Technical Envelope is a list of contractor's key personnel (based on the minimum key personnel required in the bidding documents) to be assigned to the contract to be bid, with their complete qualification and experience data (including the key personnel's signed written commitment to work for the project once awarded the contract).

Standard Form No: NPCMGNSF-INFR-06a

**KEY PERSONNEL'S CERTIFICATE OF EMPLOYMENT
(PROFESSIONAL PERSONNEL)**_____
Issuance Date**THE VICE PRESIDENT**National Power Corporation
Mindanao Generation
Maria Cristina, Iligan City

Dear Sir:

I am (Name of Nominee) a Licensed Engineer with
Professional License No. _____ Issued on _____ at _____
(date of issuance) (place
of issuance)

I hereby certify that (Name of Bidder) Has engaged my services as
(Designation) for the (Name of Project), if awarded to it.

As (Designation), I supervised the following completed projects
Similar to the contract under bidding:

| NAME OF PROJECT | OWNER | COST | DATE COMPLETED |
|-----------------|-------|-------|----------------|
| _____ | _____ | _____ | _____ |
| _____ | _____ | _____ | _____ |

At present, I am supervising the following projects:

| NAME OF PROJECT | OWNER | COST | DATE COMPLETED |
|-----------------|-------|-------|----------------|
| _____ | _____ | _____ | _____ |
| _____ | _____ | _____ | _____ |

In case of my separation for any reason whatsoever from the above-mentioned Contractor, I shall notify the National Power Corporation at least twenty one (21) days before the effective date of separation.

As (Designation), I know I will have to stay in the job site all the time to supervise and manage the Contract works to the best of my ability, and aware that I am authorized to handle only one (1) contract at a time.

One of the requirements from the bidder to be included in its Technical Envelope is a list of contractor's key personnel (viz Project Manager, Project Engineer, Safety & Health Practitioner, Foremen, etc.), to be assigned to the contract to be bid, with

their complete qualification and experience data (including the key personnel's signed written commitment to work for the project once awarded the contract).

Standard Form No. NPCMGNSSF-INF-R-06a

Page 2 of 2

I do not allow the use of my name for the purpose of enabling the above-mentioned Contractor to qualify for the Contract without any firm commitment on my part to assume the post of (Designation) therefore, if the contract is awarded to him since I understand that to do so will be a sufficient ground for my disqualification as (Designation) in any future National Power Corporation bidding or employment with any Contractor doing business with the National Power Corporation.

(Name and Signature)
AFFIANT

REPUBLIC OF THE PHILIPPINES)

City/Municipality of _____) S.S.

SUBSCRIBED AND SWORN TO before me this _____ day of _____ 20____, affiant exhibiting to me his/her Community Tax Certificate No. _____ issued on _____ at _____, Philippines.

Notary Public

Until 31 December 20____

PTR No. _____

issued at: _____

issued on: _____

TIN No. _____

Doc. No. _____
Page No. _____
Book No. _____
Series of _____

One of the requirements from the bidder to be included in its Technical Envelope is a list of contractor's key personnel (viz. Project Manager, Project Engineer, Safety & Health Practitioner, Foremen, etc.), to be assigned to the contract to be bid, with

SECTION IX- CHECKLIST OF TECHNICAL &
FINANCIAL DOCUMENTS

PR NO./REF NO MG-A7M22-080/INTRA2012-XG7-424

their complete qualification and experience data (including the key personnel's signed written commitment to work for the project once awarded the contract).

Standard Form No: NPCMGNSF-INFR-06b

**KEY PERSONNEL'S CERTIFICATE OF EMPLOYMENT
(CONSTRUCTION SAFETY AND HEALTH PRACTITIONER)**

Issuance Date

THE VICE PRESIDENT
National Power Corporation
Mindanao Generation
Maria Cristina, Iligan City

Dear Sir:

I am (Name of Nominee) a Licensed Engineer with
Professional License No. Issued on (date of issuance) at (place
of issuance)

I hereby certify that (Name of Bidder) Has engaged my services as
(Designation) for the (Name of Project) if awarded to it.

As (Designation), I supervised the following completed projects
Similar to the contract under bidding:

| NAME OF PROJECT | OWNER | COST | DATE COMPLETED |
|-----------------|-------|------|----------------|
| | | | |
| | | | |

At present, I am supervising the following projects:

| NAME OF PROJECT | OWNER | COST | DATE COMPLETED |
|-----------------|-------|------|----------------|
| | | | |
| | | | |

In case of my separation for any reason whatsoever from the above-mentioned Contractor, I shall notify the National Power Corporation at least twenty one (21) days before the effective date of separation.

As Safety and Health Practitioner, I know I will have to stay in the job site all the time and aware that I am authorized to handle only one (1) contract at a time.

One of the requirements from the bidder to be included in its Technical Envelope is a list of contractor's key personnel (viz. Project Manager, Project Engineer, Safety & Health Practitioner, Foremen, etc.), to be assigned to the contract to be bid, with their complete qualification and experience data (including the key personnel's signed written commitment to work for the project once awarded the contract).

SECTION IX- CHECKLIST OF TECHNICAL &
FINANCIAL DOCUMENTS

PR NO./REF NO MG-A7M22-080 INFRADJ22-A07-024

Standard Form No: NPCMGNSF-INFR-06b
Page 2 of 2

I do not allow the use of my name for the purpose of enabling the above-mentioned Contractor to qualify for the Contract without any firm commitment on my part to assume the post of Safety and Health Practitioner, if the contract is awarded to him since I understand that to do so will be a sufficient ground for my disqualification as Safety and Health Practitioner in any future National Power Corporation bidding or employment with any Contractor doing business with the National Power Corporation.

(Name and Signature)
AFFIANT

REPUBLIC OF THE PHILIPPINES)
City/Municipality of _____)S.S.

SUBSCRIBED AND SWORN TO before me this _____, day of _____ 20____,
affiant exhibiting to me his/her Community Tax Certificate No. _____ issued on
_____ at _____, Philippines.

Notary Public:
Until 31 December 20 _____
PTR No. _____
Issued at: _____
Issued on: _____
TIN No. _____

Doc. No. _____
Page No. _____
Book No. _____
Series of _____

One of the requirements from the bidder to be included in its Technical Envelope is a list of contractor's key personnel (viz., Project Manager, Project Engineer, Safety & Health Practitioner, Foremen, etc.), to be assigned to the contract to be bid, with

BID DOCUMENTS
NAME OF PROJECT: CONSTN OF 4 UNITS, GUARD TOWERS W/ CCTV &
SECTION @ AB S-TANK & DAM

SECTION IX: CHECKLIST OF TECHNICAL & FINANCIAL DOCUMENTS

PR NO/REF NO: MGA7M22-080/INTKAD25-A017041

their complete qualification and experience data (including the key personnel's signed written commitment to work for the project once awarded the contract)

Standard Form No: NPCMGNSF-INFR-07

**KEY PERSONNEL
(FORMAT OF BIO-DATA)**

Give the detailed information of the following personnel who are scheduled to be assigned as full-time staff for the project. Fill up a form for each person.

1. Name : _____
2. Date of Birth : _____
3. Nationality : _____
4. Education and Degrees : _____
5. Specialty : _____
6. Registration : _____
7. Length of Service with the Firm : _____

| | | | |
|------|----------|--------|--|
| Year | | | |
| from | (months) | (year) | |
| To | (months) | (year) | |
8. Years of Experience : _____
9. If item 7 is less than the required number of years stated in BDS Section III- ITB Clause 10.4, give name and length of service with previous employers to satisfy the required number of years of experience within the last ten (10) years (attached additional sheet/s), if necessary:

| <u>Name and Address of Employer</u> | <u>Length of Service</u> |
|-------------------------------------|--------------------------|
| | |
| | |
| | |

10. Experience:

This should cover the past ten (10) years of experience. (Attached as many pages as necessary to show involvement of personnel in projects using the format below).

One of the requirements from the bidder to be included in its Technical Envelope is a list of contractor's key personnel (viz Project Manager, Project Engineer, Safety & Health Practitioner, Foremen, etc.), to be assigned to the contract to be bid, with

BID DOCUMENTS

NAME OF PROJECT: CONSTN. OF 4 UNITS GUARD-TOWERS W/ CCTV &
SEC EQUIP @ AS S-TANK & DAM

PROJECT NO: MG-A7M22-000/INT/KA/202-KEN/001

SECTION IX- CHECKLIST OF TECHNICAL &
FINANCIAL DOCUMENTS

their complete qualification and experience data (including the key personnel's signed written commitment to work for the project once awarded the contract)

SECTION IX- CHECKLIST OF TECHNICAL &
FINANCIAL DOCUMENTS

PR NO./REF. NO: MG-A7M22-080/ INJ RA2023-A677-034

Standard Form No: NPCMGNSF-INFR-07
Page 2 of 2

1. Name : _____
2. Name and Address of Owner : _____
3. Name and Address of the Owner's Engineer (Consultant) : _____
4. Indicate the Features of Project (particulars of the project components and any other particular interest connected with the project) : _____
5. Contract Amount Expressed in Philippine Currency : _____
6. Position : _____
7. Structures for which the employee was responsible : _____
8. Assignment Period :

| | | | | |
|------|--|----------|--|---------|
| from | | (months) | | (years) |
| to | | (months) | | (years) |

Name and Signature of
Employee

It is hereby certified that the above personnel can be assigned to this project, if the contract is awarded to our company.

(Place and Date)

(The Authorized Representative)

One of the requirements from the bidder to be included in its Technical Envelope is a list of contractor's key personnel (viz Project Manager, Project Engineer, Safety & Health Practitioner, Foremen, etc.), to be assigned to the contract to be bid, with

BID DOCUMENTS

NAME OF PROJECT , CONSTY OF 4 UNITS: GUARD TOWERS W/ CCTV &
SEC ECPT @ AG S-TANK & DAM

PRJ NO / REF NO: MGS-A7M22-080/INLRKADQ2-AUT 024

SECTION IX- CHECKLIST OF TECHNICAL &
FINANCIAL DOCUMENTS

their complete qualification and experience data (including the key personnel's signed written commitment to work for the
project once awarded the contract).

BID DOCUMENTS

NAME OF PROJECT: CONSTN OF 4 UNITS' GUARD TOWERS W/ CCTV &
SEG EOPT @ A6 S-TANK & DAM

SECTION IX- CHECKLIST OF TECHNICAL &
FINANCIAL DOCUMENTS

PR NO./REF NO: MG-A7M22-080/ INFR.A2022-A57-034

Standard Form Number : NPCMGNSF-INFR - 08

LIST OF EQUIPMENT, OWNED OR LEASED AND/OR UNDER PURCHASE AGREEMENTS
(Based on the Minimum Equipment Required in the Bidding Schedule)

Business Name : _____
Business Address : _____

| Description | Model/Year | Capacity/ Performance / Size | Plate No. | Motor No. / Body No. |
|--------------------------------------|------------|---------------------------------|-----------|-------------------------|
| A. Owned | | | | |
| i. | | | | |
| ii. | | | | |
| iii. | | | | |
| iv. | | | | |
| B. Leased | | | | |
| i. | | | | |
| ii. | | | | |
| iii. | | | | |
| iv. | | | | |
| C. Under Purchased Agreements | | | | |
| i. | | | | |
| ii. | | | | |
| iii. | | | | |
| iv. | | | | |

Submitted by: _____
(Printed name & Signature)

Designation: _____

Date: _____

One of the requirements from the bidder to be included in its Technical Envelope is the list of its equipment units pledged for the contract, which are owned (supported by proofs of ownership), leased, and/or under purchase agreements (with corresponding engine numbers, availability of equipment from the equipment lessor/vendor for the duration of the project).

Standard Form No: NPCMGNSF-INFR-09a

Omnibus Sworn Statement (Revised)
(SOLE PROPRIETORSHIP)REPUBLIC OF THE PHILIPPINES)
CITY/MUNICIPALITY OF _____) S.S.**AFFIDAVIT**

I, [Name of Affiant], of legal age, [Civil Status], [Nationality], and residing at [Address of Affiant], after having been duly sworn in accordance with law, do hereby depose and state that:

1. I am the sole proprietor or authorized representative of [Name of Bidder] with office address at [address of Bidder];
2. As the owner and sole proprietor, or authorized representative of [Name of Bidder], I have full power and authority to do, execute and perform any and all acts necessary to participate, submit the bid, and to sign and execute the ensuing contract for [Name of the Project] of the National Power Corporation-Mindanao Generation, as shown in the attached duly notarized Special Power of Attorney;
3. [Name of Bidder] is not "blacklisted" or barred from bidding by the Government of the Philippines or any of its agencies, offices, corporations, or Local Government Units, foreign government/foreign or international financing institution whose blacklisting rules have been recognized by the Government Procurement Policy Board, **by itself or by relation, membership, association, affiliation, or controlling interest with another blacklisted person or entity as defined and provided for in the Uniform Guidelines on Blacklisting;**
4. Each of the documents submitted in satisfaction of the bidding requirements is an authentic copy of the original, complete, and all statements and information provided therein are true and correct;
5. [Name of Bidder] is authorizing the Head of the Procuring Entity or its duly authorized representative(s) to verify all the documents submitted;
6. The owner or sole proprietor is not related to the Head of the Procuring Entity, members of the Bids and Awards Committee (BAC), the Technical Working Group, and the BAC Secretariat, the head of the Project Management Office or the end-user unit, and the project consultants by consanguinity or affinity up to the third civil degree;
7. [Name of Bidder] complies with existing labor laws and standards; and
8. [Name of Bidder] is aware of and has undertaken the responsibilities as a Bidder in compliance with the Philippine Bidding Documents, which includes:
 - a. Carefully examining all of the Bidding Documents;
 - b. Acknowledging all conditions, local or otherwise, affecting the implementation of the

BID DOCUMENTS
NAME OF PROJECT CONSTN OF 4 UNITS GUARD TOWERS W/ CCTV &
SEC EQPT @ AB S-TANK & DAM

PRJ NO / RFB NO MG-A7M22-080 / INFR-A2022-A07-024

SECTION IX- CHECKLIST OF TECHNICAL &
FINANCIAL DOCUMENTS

Contract;

Standard Form No: NPCMGNSF-INFR-09a

Page 2 of 2

- c. Making an estimate of the facilities available and needed for the contract to be bid, if any; and
 - d. Inquiring or securing Supplemental/Bid Bulletin(s) issued for the *[Name of the Project]*.
9. *[Name of Bidder]* did not give or pay directly or indirectly, any commission, amount, fee, or any form of consideration, pecuniary or otherwise, to any person or official, personnel or representative of the government in relation to any procurement project or activity.
10. In case advance payment was made or given, failure to perform or deliver any of the obligations and undertakings in the contract shall be sufficient grounds to constitute criminal liability for Swindling (Estafa) or the commission of fraud with unfaithfulness or abuse of confidence through misappropriating or converting any payment received by a person or entity under an obligation involving the duty to deliver certain goods or services, to the prejudice of the public and the government of the Philippines pursuant to Article 315 of Act No. 3815 s. 1930, as amended, or the Revised Penal Code.

IN WITNESS WHEREOF, I have hereunto set my hand this ___ day of ___, 20__ at _____, Philippines.

*[Insert NAME OF BIDDER OR ITS AUTHORIZED
REPRESENTATIVE]
[Insert signatory's legal capacity]
Affiant*

[Jurat]
[Format shall be based on the latest Rules on Notarial Practice]

BID DOCUMENTS
NAME OF PROJECT: CONSTN OF 4 UNITS GUARD TOWERS W/ CCTV &
SEC EOP T @ A6 S. TANK & DAM

PR NO/REF: NO. MG-A7M22-080/ INT K43022-A67H04

SECTION IX- CHECKLIST OF TECHNICAL &
FINANCIAL DOCUMENTS:

Standard Form No: NPCMGNSF-INFN-09b

Omnibus Sworn Statement (Revised)
PARTNERSHIP/COOP/CORP/JOINT VENTUREREPUBLIC OF THE PHILIPPINES)
CITY/MUNICIPALITY OF _____) S.S.**AFFIDAVIT**I, [Name of Affiant], of legal age, [Civil Status], [Nationality], and residing at [Address of Affiant], after having been duly sworn in accordance with law, do hereby depose and state that:

1. I am the duly authorized and designated representative of [Name of Bidder] with office address at [address of Bidder];
2. I am granted full power and authority to do, execute and perform any and all acts necessary to participate, submit the bid, and to sign and execute the ensuing contract for [Name of the Project] of the National Power Corporation-Mindanao Generation, as shown in the attached [state title of attached document showing proof of authorization (e.g., duly notarized Secretary's Certificate, Board/Partnership Resolution, or Special Power of Attorney, whichever is applicable)];
3. [Name of Bidder] is not "blacklisted" or barred from bidding by the Government of the Philippines or any of its agencies, offices, corporations, or Local Government Units, foreign government/foreign or international financing institution whose blacklisting rules have been recognized by the Government Procurement Policy Board, **by itself or by relation, membership, association, affiliation, or controlling interest with another blacklisted person or entity as defined and provided for in the Uniform Guidelines on Blacklisting;**
4. Each of the documents submitted in satisfaction of the bidding requirements is an authentic copy of the original, complete, and all statements and information provided therein are true and correct;
5. [Name of Bidder] is authorizing the Head of the Procuring Entity or its duly authorized representative(s) to verify all the documents submitted;
6. *[If a partnership or cooperative:]* None of the officers and members of [Name of Bidder] is related to the Head of the Procuring Entity, members of the Bids and Awards Committee (BAC), the Technical Working Group, and the BAC Secretariat, the head of the Project Management Office or the end-user unit, and the project consultants by consanguinity or affinity up to the third civil degree;

[If a corporation or joint venture:] None of the officers, directors, and controlling stockholders of [Name of Bidder] is related to the Head of the Procuring Entity, members of the Bids and Awards Committee (BAC), the Technical Working Group, and the BAC

Secretariat, the head of the Project Management Office or the end-user unit, and the project consultants by consanguinity or affinity up to the third civil degree;

Standard Form No: NPCMGNSF-INFR-09b

Page 2 of 2

7. [Name of Bidder] complies with existing labor laws and standards; and
8. [Name of Bidder] is aware of and has undertaken the responsibilities as a Bidder in compliance with the Philippine Bidding Documents, which includes:
 - a. Carefully examining all of the Bidding Documents;
 - b. Acknowledging all conditions, local or otherwise, affecting the implementation of the Contract;
 - c. Making an estimate of the facilities available and needed for the contract to be bid, if any; and
 - d. Inquiring or securing Supplemental/Bid Bulletin(s) Issued for the [Name of the Project].
9. [Name of Bidder] did not give or pay directly or indirectly, any commission, amount, fee, or any form of consideration, pecuniary or otherwise, to any person or official, personnel or representative of the government in relation to any procurement project or activity.
10. In case advance payment was made or given, failure to perform or deliver any of the obligations and undertakings in the contract shall be sufficient grounds to constitute criminal liability for Swindling (Estafa) or the commission of fraud with unfaithfulness or abuse of confidence through misappropriating or converting any payment received by a person or entity under an obligation involving the duty to deliver certain goods or services, to the prejudice of the public and the government of the Philippines pursuant to Article 315 of Act No. 3815 s. 1930, as amended, or the Revised Penal Code.

IN WITNESS WHEREOF, I have hereunto set my hand this ___ day of ___, 20__ at _____, Philippines.

[Insert NAME OF BIDDER OR ITS AUTHORIZED
REPRESENTATIVE]

[Insert signatory's legal capacity]
Affiant

[Jurat]

[Format shall be based on the latest Rules on Notarial Practice].

BID DOCUMENTS

NAME OF PROJECT: CONSTN OF 4 UNITS GUARD TOWERS W/ CCTV &
SEC EQPT @ A6 S-TANK & DAM

SECTION IX-CHECKLIST OF TECHNICAL &
FINANCIAL DOCUMENTS

PR NO./REF. NO. MG-A/TM/22-080/IN/RA/2022-A/07-024

Standard Form No: NPCMGNSF-INFR-10

NET FINANCIAL CONTRACTING CAPACITY (NFCC)

- A. Summary of the Bidder's/Contractor's assets and liabilities on the basis of the income tax return and audited financial statement for the immediately preceding calendar year are:

| | | Year 20__ |
|----|---------------------------|-----------|
| 1. | Total Assets | |
| 2. | Current Assets | |
| 3. | Total Liabilities | |
| 4. | Current Liabilities | |
| 5. | Net Worth (1-3) | |
| 6. | Net Working Capital (2-4) | |

- B. The Net Financial Contracting Capacity (NFCC) based on the above data is computed as follows:

NFCC = [(Current assets minus current liabilities) x 15] minus the value of all outstanding or uncompleted portions of the projects under ongoing contracts, including awarded contracts yet to be started coinciding with the contract for this Project.

NFCC – P _____

Herewith attached is certified true copy of the audited financial statement, stamped "RECEIVED" by the BIR or BIR authorized collecting agent for the immediately preceding calendar year.

Submitted by:

Name of Bidder/Contractor

Signature of Authorized Representative

Date: _____

Standard Form No: NPCMGNSF-INFR-11

JOINT VENTURE AGREEMENT**KNOW ALL MEN BY THESE PRESENTS:**

That this JOINT VENTURE AGREEMENT is entered in to by and between:
_____, of legal age, (civil status) _____, authorized representative of
_____ and a resident of _____.

- and -

_____, of legal age, (civil status) _____, authorized representative of
_____ and a resident of _____.

That both parties agree to join together their capital, manpower, equipment, and other resources and efforts to enable the Joint Venture to participate in the Bidding and Undertaking of the hereunder stated Contract of the **National Power Corporation**.

NAME OF FIRM**CAPITAL CONTRIBUTION**

That the capital contribution of each member firm:

NAME OF FIRM**CAPITAL CONTRIBUTION**

| | |
|----|-----|
| 1. | DLD |
| 2. | DHD |

That both parties agree to be jointly and severally liable for their participation in the Bidding and Undertaking of the said contract.

That both parties agree that _____ and/or _____ shall be the Official Representative/s of the Joint Venture, and are granted full power and authority to do, execute and perform any and all acts necessary and/or to represent the Joint Venture in the Bidding and Undertaking of the said contract, as fully and effectively and the Joint Venture may do and if personally present with full power of substitution and revocation.

That this Joint Venture Agreement shall remain in effect only for the above stated Contract until terminated by both parties.

Name & Signature of Authorized
Representative

Official Designation

Name of Firm

Name & Signature of
Authorized Representative

Official Designation

Name of Firm

Witnesses

BID DOCUMENTS

NAME OF PROJECT - CONSTN OF 4 UNITS GUARD TOWERS W/ CCTV &
SEC EQPT @ A6 S-TANK & DAM

SECTION IX- CHECKLIST OF TECHNICAL &
FINANCIAL DOCUMENTS

PR NO /REF NO. MG-A7M22-080/ INFRA2022-AG7-024

If the bidder is a joint venture, one of the requirements is the submission of a valid joint venture agreement.

Standard Form No: NPCMGNSF-INFR-11

Page 2 of 2

ACKNOWLEDGEMENT

BEFORE ME, a Notary Public for and in _____, Philippines, this _____ day of _____, 20____, personally appeared _____, authorized representative, of _____ with Community Tax Certificate No. _____, issued at _____, on _____, AND _____ authorized representative, of _____ with Community Tax Certificate No. _____, issued at _____, on _____, known to me to be the same person who executed the foregoing instrument consisting of two (2) pages, including the page whereon the acknowledgements are written, all pages signed by both parties and their instrumental witnesses and they acknowledged before me that the same are their free and voluntary acts and deeds and that of the Corporations they represents.

WITNESS MY HAND AND NOTARIAL SEAL, at the place and on the date first above written.

Notary Public

Until 31 December 20 _____

PTR No. _____

Issued at: _____

Issued on: _____

TIN No. _____

Doc. No. _____

Page No. _____

Book No. _____

Series of _____

If the bidder is a joint venture, one of the requirements is the submission of a valid joint venture agreement
Standard Form No: NPCMGNSF-INFR-12

Bid Form for the Procurement of Infrastructure Projects

BID FORM

Date : _____

Project Identification No. : _____

To: **The Vice President**
National Power Corporation
Mindanao Generation
Maria Cristina, Iligan City

Having examined the Philippine Bidding Documents (PBDs) including the Supplemental or Bid Bulletin Numbers [insert numbers], the receipt of which is hereby duly acknowledged, we, the undersigned, declare that:

- a. We have no reservation to the PBDs, including the Supplemental or Bid Bulletins, for the Procurement Project: [insert name of contract];
- b. We offer to execute the Works for this Contract in accordance with the PBDs;
- c. The total price of our Bid in words and figures, excluding any discounts offered below is: [insert information];
- d. The discounts offered and the methodology for their application are: [insert information];
- e. The total bid price includes the cost of all taxes, such as, but not limited to: [specify the applicable taxes, e.g. (i) value added tax (VAT), (ii) income tax, (iii) local taxes, and (iv) other fiscal levies and duties], which are itemized herein and reflected in the detailed estimates;
- f. Our Bid shall be valid within the a period stated in the PBDs, and it shall remain binding upon us at any time before the expiration of that period;
- g. If our Bid is accepted, we commit to obtain a Performance Security in the amount of [insert percentage amount] percent of the Contract Price for the due performance of the Contract, or a Performance Securing Declaration in lieu of the the allowable forms of Performance Security, subject to the terms and conditions of issued GPPB guidelines¹ for this purpose;
- h. We are not participating, as Bidders, in more than one Bid in this bidding process, other than alternative offers in accordance with the Bidding Documents;
- i. We understand that this Bid, together with your written acceptance thereof

¹ currently based on GPPB Resolution No. 09-2020

included in your notification of award, shall constitute a binding contract between us, until a formal Contract is prepared and executed; and
Standard Form No: NPCMGNSF-INFR-12

Page 2 of 2

- j. We understand that you are not bound to accept the Lowest Calculated Bid or any other Bid that you may receive.
- k. We likewise certify/confirm that the undersigned, is the duly authorized representative of the bidder, and granted full power and authority to do, execute and perform any and all acts necessary to participate, submit the bid, and to sign and execute the ensuing contract for the [Name of Project] of the National Power Corporation-Mindanao Generation.
- l. We acknowledge that failure to sign each and every page of this Bid Form, including the Bill of Quantities, shall be a ground for the rejection of our bid.

Name: _____

Legal Capacity: _____

Signature: _____

Duly authorized to sign the Bid for and behalf of: _____

Date: _____

| | | |
|---------------|-----------------|---|
| BID DOCUMENTS | NAME OF PROJECT | CONSTN OF 4 UNITS GUARD TOWERS W/ CCTV & SEC EQPT @ A6 S-TANK & DAM |
|---------------|-----------------|---|

| | | |
|---------------|-----------------|---|
| BID DOCUMENTS | NAME OF PROJECT | CONSTN OF 4 UNITS GUARD TOWERS W/ CCTV & SEC EQPT @ A6 S-TANK & DAM |
|---------------|-----------------|---|

SECTION IX- CHECKLIST OF TECHNICAL & FINANCIAL DOCUMENTS

SECTION IX- CHECKLIST OF TECHNICAL & FINANCIAL DOCUMENTS

Standard Form Number : NPCMGNSF-INFR - 13

DETAILED COST ESTIMATE FORM

Name of Bidder : _____

[illegible]

Name, Signature of Authorized Representative

Standard Form No: NPCMGNSF-INFR-14

SUMMARY SHEETS OF MATERIALS PRICES, LABOR RATES AND EQUIPMENT RENTAL RATES

Name of Bidder: _____

I. Unit Prices of Materials

| Materials Description | Unit | Unit Price |
|-----------------------|------|------------|
|-----------------------|------|------------|

II. Manpower Hourly Rates

| Designation | Rate/Hr. |
|-------------|----------|
|-------------|----------|

III. Equipment Hourly Rental Rates

| Equipment Description | Rental Rate/Hr. |
|-----------------------|-----------------|
|-----------------------|-----------------|

 Name, Signature of Authorized Representative

 Designation

Performance Securing Declaration (Revised)

[if used as an alternative performance security but it is not required to be submitted with the Bid, as it shall be submitted within ten (10) days after receiving the Notice of Award]

REPUBLIC OF THE PHILIPPINES)
 CITY OF _____) S.S.

PERFORMANCE SECURING DECLARATION

Invitation to Bid: [Insert Reference Number indicated in the Bidding Documents]

To: [Insert name and address of the Procuring Entity]

I/We, the undersigned, declare that:

1. I/We understand that, according to your conditions, to guarantee the faithful performance by the supplier/distributor/manufacturer/contractor/consultant of its obligations under the Contract, I/we shall submit a Performance Securing Declaration within a maximum period of ten (10) calendar days from the receipt of the Notice of Award prior to the signing of the Contract.
2. I/We accept that: I/we will be automatically disqualified from bidding for any procurement contract with any procuring entity for a period of one (1) year for the first offense, or two (2) years **for the second offense**, upon receipt of your Blacklisting Order if I/We have violated my/our obligations under the Contract;
3. I/We understand that this Performance Securing Declaration shall cease to be valid upon:
 - a. issuance by the Procuring Entity of the Certificate of Final Acceptance, subject to the following conditions:
 - i. Procuring Entity has no claims filed against the contract awardee;
 - ii. It has no claims for labor and materials filed against the contractor; and
 - iii. Other terms of the contract; or
 - b. replacement by the winning bidder of the submitted PSD with a performance security in any of the prescribed forms under Section 39.2 of the 2016 revised IRR of RA No. 9184 as required by the end-user.

IN WITNESS WHEREOF, I/We have hereunto set my/our hand/s this ____ day of [month] [year] at [place of execution].

*[Insert NAME OF BIDDER OR ITS
 AUTHORIZED REPRESENTATIVE]*

[Insert signatory's legal capacity]

Affiant

[Jurat]

[Format shall be based on the latest Rules on Notarial Practice]

**Contract Agreement Form for the
 Procurement of Infrastructure Projects (Revised)**

*[not required to be submitted with the Bid, but it shall be submitted within ten (10) days after
 receiving the Notice of Award]*

CONTRACT AGREEMENT

THIS AGREEMENT, made this *[insert date]* day of *[insert month]*, *[insert year]* between *[name and address of PROCURING ENTITY]* (hereinafter called the "Entity") and *[name and address of Contractor]* (hereinafter called the "Contractor").

WHEREAS, the Entity is desirous that the Contractor execute *[name and identification number of contract]* (hereinafter called "the Works") and the Entity has accepted the Bid for *[contract price in words and figures in specified currency]* by the Contractor for the execution and completion of such Works and the remedying of any defects therein.

NOW THIS AGREEMENT WITNESSETH AS FOLLOWS:

1. In this Agreement, words and expressions shall have the same meanings as are respectively assigned to them in the Conditions of Contract hereinafter referred to.
2. The following documents as required by the 2016 revised Implementing Rules and Regulations of Republic Act No. 9184 shall be deemed to form and be read and construed as part of this Agreement, *viz.*:
 - a. Philippine Bidding Documents (PBDs);
 - i. Drawings/Plans;
 - ii. Specifications;
 - iii. Bill of Quantities;
 - iv. General and Special Conditions of Contract;
 - v. Supplemental or Bid Bulletins, if any;
 - b. Winning bidder's bid, including the Eligibility requirements, Technical and Financial Proposals, and all other documents or statements submitted;

Bid form, including all the documents/statements contained in the Bidder's bidding envelopes, as annexes, and all other documents submitted (*e.g.*, Bidder's response to request for clarifications on the bid), including corrections to the bid, if any, resulting from the Procuring Entity's bid evaluation;

 - c. Performance Security;
 - d. Notice of Award of Contract and the Bidder's conforme thereto; and

- e. Other contract documents that may be required by existing laws and/or the Procuring Entity concerned in the PBDs. Winning bidder agrees that additional contract documents or information prescribed by the GPPB that are subsequently required for submission after the contract execution, such as the Notice to Proceed, Variation Orders, and Warranty Security, shall likewise form part of the Contract.

3. In consideration for the sum of [total contract price in words and figures] or such other sums as may be ascertained, [Named of the bidder] agrees to [state the object of the contract] in accordance with his/her/its Bid.
4. The [Name of the procuring entity] agrees to pay the above-mentioned sum in accordance with the terms of the Bidding.

IN WITNESS whereof the parties thereto have caused this Agreement to be executed the day and year first before written.

| | |
|-------------------------------------|-------------------------------------|
| [Insert Name and Signature] | [Insert Name and Signature] |
| [Insert Signatory's Legal Capacity] | [Insert Signatory's Legal Capacity] |
| for: | for: |
| [Insert Name of Supplier] | [Insert Procuring Entity] |

Acknowledgment
[Format shall be based on the latest Rules on Notarial Practice]

